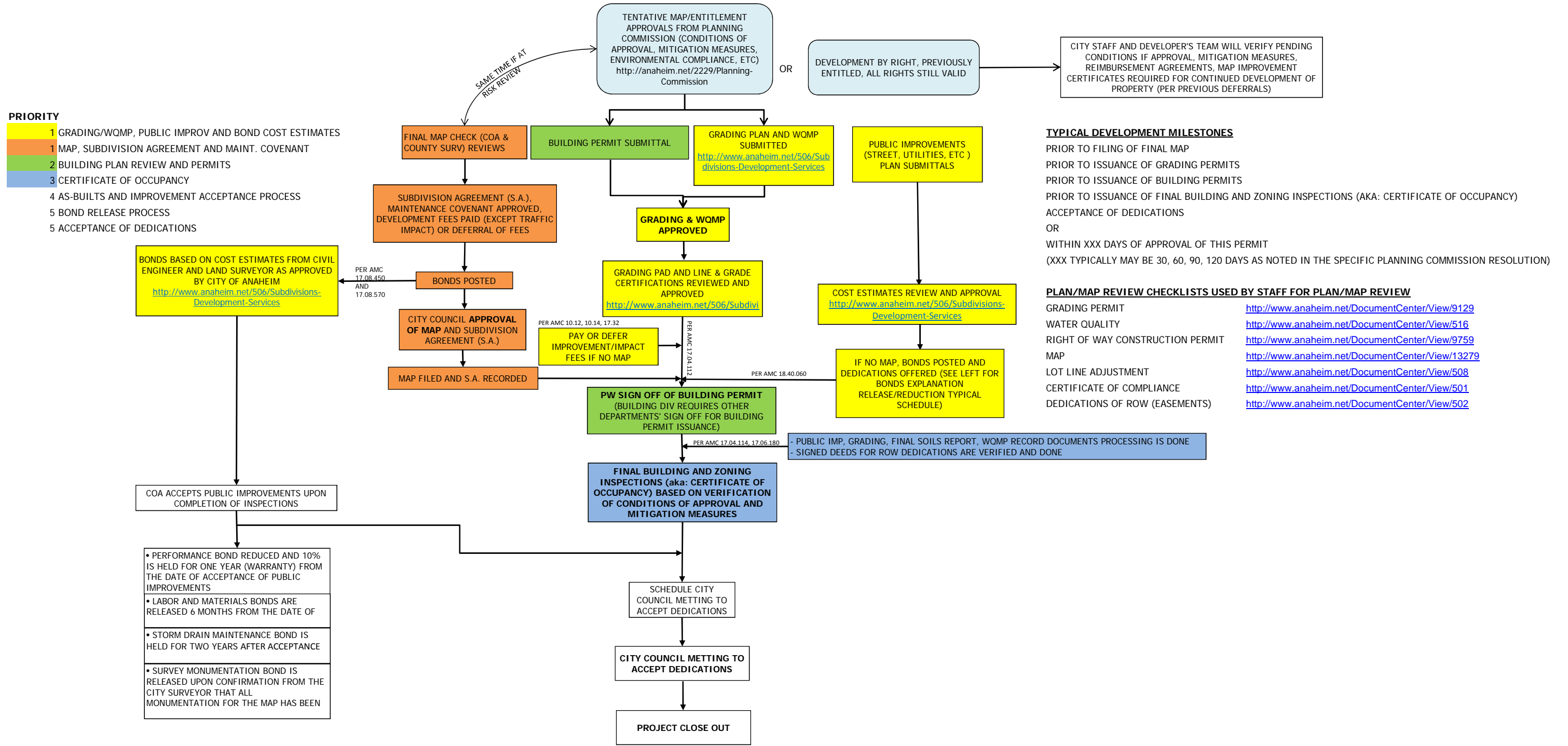


ANAHEIM PUBLIC WORKS LAND DEVELOPMENT TYPICAL PROCESS (DRAFT)



This development flowchart is for the use of the public, consultants and City staff to have a common understanding of the typical requirements for land development projects and to save project time while complying with Development requirements. Inquiries and comments are welcomed anytime. For further assistance, please contact Anaheim Public Works, Development Services Section at 714-765-5176 or e-mail at rgarcia1@anaheim.net

Thank you,
 Raul Garcia, P.E., P.L.S.
 Development Services Manager