

**Appendix G:
Noise Supporting Information**

THIS PAGE INTENTIONALLY LEFT BLANK



Noise Measurement Site 1 - looking north



Noise Measurement Site 1 - looking northeast



Noise Measurement Site 1 - looking east



Noise Measurement Site 1 - looking southeast



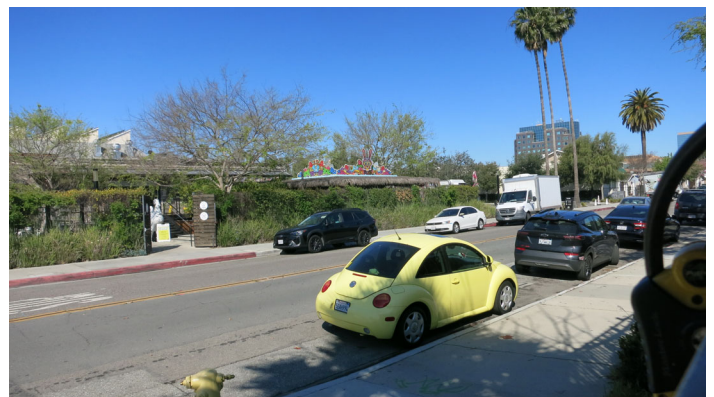
Noise Measurement Site 1 - looking south



Noise Measurement Site 1 - looking southwest



Noise Measurement Site 1 - looking west



Noise Measurement Site 1 - looking northwest



Noise Measurement Site 2 - looking north



Noise Measurement Site 2 - looking northeast



Noise Measurement Site 2 - looking east



Noise Measurement Site 2 - looking southeast



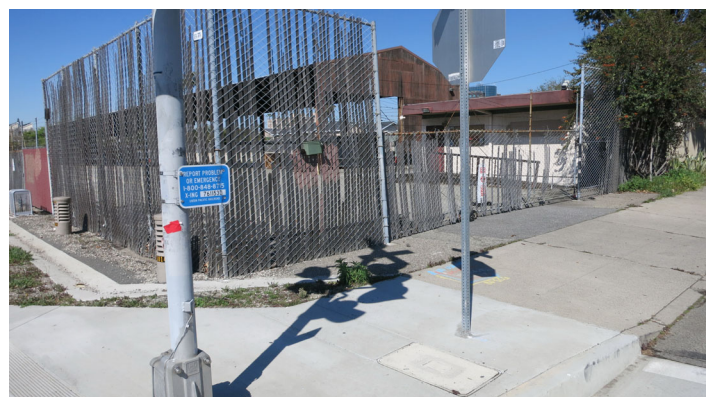
Noise Measurement Site 2 - looking south



Noise Measurement Site 2 - looking southwest



Noise Measurement Site 2 - looking west



Noise Measurement Site 2 - looking northwest



Noise Measurement Site 3 - looking northeast



Noise Measurement Site 3 - looking northeast



Noise Measurement Site 3 - looking east



Noise Measurement Site 3 - looking southeast



Noise Measurement Site 3 - looking south



Noise Measurement Site 3 - looking southwest



Noise Measurement Site 3 - looking west



Noise Measurement Site 3 - looking northwest

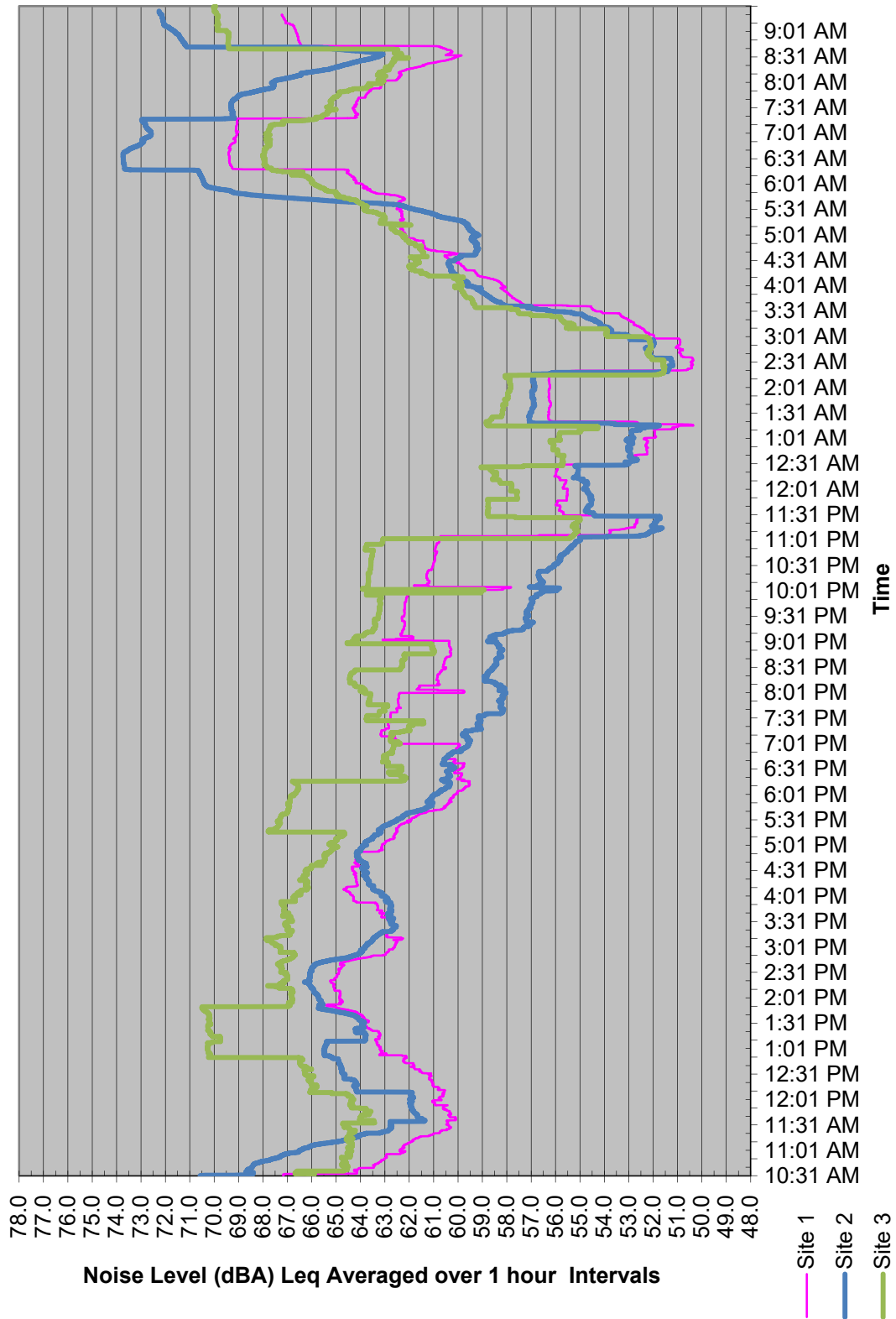
Site 1 - Near Southwest Corner of Project Site
 March 18, 2024 9:48:04 AM Leq Daytime = 63.6
 Sampling Time = 1 sec Freq Weighting=A Leq Nighttime = 62.0
 Record Num = 86402 CNEL(24hr) = 69.3
 Leq = 63.1 Ldn(24hr) = 69.3
 Min = 46.2 Min Leq hr at 1:13 AM 50.3
 Max = 96.9 Max Leq hr at 6:22 AM 69.4

Site 2 - Near Middle of Project Site (South Side)
 March 18, 2024 9:53:01 AM Leq Daytime = 66.0
 Sampling Time = 1 sec Freq Weighting=A Leq Nighttime = 64.9
 Record Num = 86402 CNEL(24hr) = 71.6
 Leq = 65.6 Ldn(24hr) = 71.5
 Min = 44.7 Min Leq hr at 2:24 AM 51.2
 Max = 100.1 Max Leq hr at 6:16 AM 73.7

Site 3 - Near Southeast Corner of Project Site
 March 18, 2024 10:01:00 AM Leq Daytime = 66.3
 Sampling Time = 1 sec Freq Weighting=A Leq Nighttime = 62.2
 Record Num = 86401 CNEL(24hr) = 69.7
 Leq = 65.2 Ldn(24hr) = 69.5
 Min = 43.8 Min Leq hr at 2:20 AM 51.5
 Max = 98.6 Max Leq hr at 1:47 PM 70.5

SPL	Time	Leq (1 hour Avg.)	Ldn	CNEL
61.4	9:48:04	61.4	61.4	61.4
61.2	9:48:06	61.2	61.2	61.2
61.3	9:48:08	61.3	61.3	61.3
62.1	9:48:07	62.1	62.1	62.1
65.5	9:48:08	65.5	65.5	65.5
64.9	9:48:09	64.9	64.9	64.9
61.7	9:48:10	61.7	61.7	61.7
59.4	9:48:11	59.4	59.4	59.4
58.3	9:48:12	58.3	58.3	58.3
67.1	9:48:13	67.1	67.1	67.1
70.4	9:48:14	70.4	70.4	70.4
69.0	9:48:15	69.0	69.0	69.0
65.6	9:48:16	65.6	65.6	65.6
62.7	9:48:17	62.7	62.7	62.7
61.0	9:48:18	61.0	61.0	61.0
59.6	9:48:19	59.6	59.6	59.6
58.9	9:48:20	58.9	58.9	58.9
62.6	9:48:21	62.6	62.6	62.6
68.9	9:48:22	68.9	68.9	68.9
70.1	9:48:23	70.1	70.1	70.1
66.6	9:48:24	66.6	66.6	66.6
63.3	9:48:25	63.3	63.3	63.3
61.3	9:48:26	61.3	61.3	61.3
64.0	9:48:27	64.0	64.0	64.0
63.7	9:48:28	63.7	63.7	63.7
64.5	9:48:29	64.5	64.5	64.5
63.5	9:48:30	63.5	63.5	63.5
66.4	9:48:31	66.4	66.4	66.4
65.7	9:48:32	65.7	65.7	65.7
63.8	9:48:33	63.8	63.8	63.8
65.0	9:48:34	65.0	65.0	65.0
64.1	9:48:35	64.1	64.1	64.1
62.5	9:48:36	62.5	62.5	62.5
69.5	9:48:37	69.5	69.5	69.5
67.6	9:48:38	67.6	67.6	67.6
67.1	9:48:39	67.1	67.1	67.1
68.3	9:48:40	68.3	68.3	68.3
64.8	9:48:41	64.8	64.8	64.8
62.3	9:48:42	62.3	62.3	62.3
61.6	9:48:43	61.6	61.6	61.6
61.6	9:48:44	61.6	61.6	61.6
61.1	9:48:45	61.1	61.1	61.1
60.2	9:48:46	60.2	60.2	60.2
59.5	9:48:47	59.5	59.5	59.5
58.8	9:48:48	58.8	58.8	58.8
59.1	9:48:49	59.1	59.1	59.1
65.7	9:48:50	65.7	65.7	65.7
65.5	9:48:51	65.5	65.5	65.5
62.4	9:48:52	62.4	62.4	62.4
60.4	9:48:53	60.4	60.4	60.4
72.6	9:48:54	72.6	72.6	72.6
73.2	9:48:55	73.2	73.2	73.2
69.6	9:48:56	69.6	69.6	69.6
66.3	9:48:57	66.3	66.3	66.3
63.4	9:48:58	63.4	63.4	63.4
61.3	9:48:59	61.3	61.3	61.3
60.1	9:49:00	60.1	60.1	60.1
64.8	9:49:01	64.8	64.8	64.8
68.0	9:49:02	68.0	68.0	68.0
65.0	9:49:03	65.0	65.0	65.0
62.6	9:49:04	62.6	62.6	62.6
62.9	9:49:05	62.9	62.9	62.9
62.7	9:49:06	62.7	62.7	62.7
63.0	9:49:07	63.0	63.0	63.0
60.8	9:49:08	60.8	60.8	60.8
66.6	9:49:09	66.6	66.6	66.6
65.7	9:49:10	65.7	65.7	65.7
63.5	9:49:11	63.5	63.5	63.5
70.5	9:49:12	70.5	70.5	70.5
71.3	9:49:13	71.3	71.3	71.3
76.7	9:49:14	76.7	76.7	76.7
78.1	9:49:15	78.1	78.1	78.1
78.0	9:49:16	78.0	78.0	78.0
74.2	9:49:17	74.2	74.2	74.2
72.6	9:49:18	72.6	72.6	72.6
69.1	9:49:19	69.1	69.1	69.1
66.5	9:49:20	66.5	66.5	66.5
64.8	9:49:21	64.8	64.8	64.8
68.9	9:49:22	68.9	68.9	68.9
69.7	9:49:23	69.7	69.7	69.7
69.8	9:49:24	69.8	69.8	69.8
72.0	9:49:25	72.0	72.0	72.0
73.2	9:49:26	73.2	73.2	73.2
72.5	9:49:27	72.5	72.5	72.5
72.4	9:49:28	72.4	72.4	72.4
72.0	9:49:29	72.0	72.0	72.0
69.8	9:49:30	69.8	69.8	69.8
67.8	9:49:31	67.8	67.8	67.8
73.6	9:49:32	73.6	73.6	73.6
82.5	9:49:33	82.5	82.5	82.5
78.4	9:49:34	78.4	78.4	78.4
75.4	9:49:35	75.4	75.4	75.4
73.3	9:49:36	73.3	73.3	73.3
69.5	9:49:37	69.5	69.5	69.5
66.5	9:49:38	66.5	66.5	66.5
64.4	9:49:39	64.4	64.4	64.4
62.5	9:49:40	62.5	62.5	62.5
60.5	9:49:41	60.5	60.5	60.5
59.0	9:49:42	59.0	59.0	59.0
58.0	9:49:43	58.0	58.0	58.0
57.6	9:49:44	57.6	57.6	57.6
57.1	9:49:45	57.1	57.1	57.1
57.1	9:49:46	57.1	57.1	57.1
57.0	9:49:47	57.0	57.0	57.0
66.9	9:49:48	66.9	66.9	66.9
56.8	9:49:49	56.8	56.8	56.8
56.8	9:49:50	56.8	56.8	56.8
57.1	9:49:51	57.1	57.1	57.1
57.2	9:49:52	57.2	57.2	57.2
58.4	9:49:53	58.4	58.4	58.4
59.5	9:49:54	59.5	59.5	59.5
60.3	9:49:55	60.3	60.3	60.3
61.0	9:49:56	61.0	61.0	61.0
60.6	9:49:57	60.6	60.6	60.6
59.9	9:49:58	59.9	59.9	59.9
59.2	9:49:59	59.2	59.2	59.2
60.6	9:50:00	60.6	60.6	60.6
58.8	9:50:01	58.8	58.8	58.8
57.8	9:50:02	57.8	57.8	57.8
57.8	9:50:03	57.8	57.8	57.8
57.8	9:50:04	57.8	57.8	57.8
57.9	9:50:05	57.9	57.9	57.9
58.4	9:50:06	58.4	58.4	58.4
58.6	9:50:07	58.6	58.6	58.6
58.7	9:50:08	58.7	58.7	58.7
58.5	9:50:09	58.5	58.5	58.5
58.5	9:50:10	58.5	58.5	58.5
59.1	9:50:11	59.1	59.1	59.1
59.5	9:50:12	59.5	59.5	59.5
60.9	9:50:13	60.9	60.9	60.9
61.6	9:50:14	61.6	61.6	61.6
62.6	9:50:15	62.6	62.6	62.6
62.9	9:50:16	62.9	62.9	62.9
61.6	9:50:17	61.6	61.6	61.6
61.1	9:50:18	61.1	61.1	61.1
61.2	9:50:19	61.2	61.2	61.2
61.0	9:50:20	61.0	61.0	61.0
60.6	9:50:21	60.6	60.6	60.6
60.8	9:50:22	60.8	60.8	60.8
61.4	9:50:23	61.4	61.4	61.4
62.0	9:50:24	62.0	62.0	62.0
61.5	9:50:25	61.5	61.5	61.5
61.6	9:50:26	61.6	61.6	61.6
61.2	9:50:27	61.2	61.2	61.2
60.4	9:50:28	60.4	60.4	60.4
60.4	9:50:29	60.4	60.4	60.4
59.7	9:50:30	59.7	59.7	59.7
59.0	9:50:31	59.0	59.0	59.0
58.5	9:50:32	58.5	58.5	58.5
57.9	9:50:33	57.9	57.9	57.9
57.7	9:50:34	57.7	57.7	57.7
57.4	9:50:35	57.4	57.4	57.4
57.5	9:50:36	57.5	57.5	57.5
57.4	9:50:37	57.4	57.4	57.4
57.6	9:50:38	57.6	57.6	57.6
58.9	9:50:39	58.9	58.9	58.9
60.1	9:50:40	60.1	60.1	60.1
60.6	9:50:41	60.6	60.6	60.6
60.3	9:50:42	60.3	60.3	60.3
59.9	9:50:43	59.9	59.9	59.9
60.0	9:50:44	60.0	60.0	60.0
59.6	9:50:45	59.6	59.6	59.6
60.2	9:50:46	60.2	60.2	60.2
60.3	9:50:47	60.3	60.3	60.3

SPL	Time	Leq (1 hour Avg.)	Ldn	CNEL
72.2	9:53:01	72.2	72.2	72.2
70.2	9:53:02	70.2	70.2	70.2
68.9	9:53:03	68.9	68.9	68.9
67.7	9:53:04	67.7	67.7	67.7
65.5	9:53:05	65.5	65.5	65.5
66.0	9:53:06	66.0	66.0	66.0
68.5	9:53:07	68.5	68.5	68.5
71.5	9:53:08	71.5	71.5	71.5
68.6	9:53:09	68.6	68.6	68.6
66.1	9:53:10	66.1	66.1	66.1
64.3	9:53:11	64.3	64.3	64.3
65.7	9:53:12	65.7	65.7	65.7
66.8	9:53:13	66.8	66.8	66.8
64.9	9:53:14	64.9	64.9	64.9
64.0	9:53:15	64.0	64.0	64.0
68.0	9:53:16	68.0	68.0	68.0
58.9	9:53:17	58.9	58.9	58.9
67.7	9:53:18	67.7	67.7	67.7
70.6	9:53:19	70.6	70.6	70.6
72.7	9:53:20	72.7	72.7	72.7
72.0	9:53:21	72.0	72.0	72.0
70.3	9:53:22	70.3	70.3	70.3
68.9	9:53:23	68.9	68.9	68.9
67.3	9:53:24	67.3	67.3	67.3
66.1	9:53:25	66.1	66.1	66.1
65.8	9:53:26	65.8	65.8	65.8
65.0	9:53:27	65.0	65.0	65.0
64.4	9:53:28	64.4	64.4	64.4
63.5	9:53:29	63.5	63.5	63.5
64.3	9:53:30	64.3	64.3	64.3
63.1	9:53:31	63.1	63.1	63.1
62.2	9:53:32	62.2	62.2	62.2
61.5	9:53:33	61.5	61.5	61.5
61.2	9:53:34	61.2	61.2	61.2
61.3	9:53:35	61.3	61.3	61.3
62.1	9:53:36	62.1	62.1	62.1
62.1	9:53:37	62.1	62.1	62.1
62.4	9:53:38	62.4	62.4	62.4
62.3	9:53:39	62.3	62.3	62.3
61.5	9:53:40	61.5	61.5	61.5
61.2	9:53:41	61.2	61.2	61.2
61.3	9:53:42	61.3	61.3	61.3
61.2	9:53:43	61.2	61.2	61.2
61.2	9:53:44	61.2	61.2	61.2
62.1	9:53:45	62.1	62.1	62.1
62.1	9:53:46	62.1	62.1	62.1
62.0	9:53:47	62.0	62.0	62.0
62.6	9:53:48	62.6	62.6	62.6
64.3	9:53:49	64.3	64.3	64.3
64.4	9:53:50	64.4	64.4	64.4
64.7	9:53:51	64.7	64.7	64.7
64.0	9:53:52	64.0	64.0	64.0
63.1	9:53:53	63.1	63.1	63.1
62.4	9:53:54	62.4	62.4	62.



Roadway Construction Noise Model (RCNM), Version 1.1

Report date: 3/27/2024
 Case Description: Anaheim The Mill - Demolition

---- Receptor #1 ----

Description	Land Use	Baselines (dBA)		Night
		Daytime	Evening	
Packing District to West	Commercial	63.6	63.6	62.0

Description	Impact Device	Usage(%)	Equipment		Receptor Distance (feet)	Estimated Shielding (dBA)
			Spec Lmax (dBA)	Actual Lmax (dBA)		
Concrete Saw	No	20		89.6	435	0
Dozer	No	40		81.7	435	0
Tractor	No	40	84		435	0
Front End Loader	No	40		79.1	435	0
Backhoe	No	40		77.6	435	0

Results

Equipment	Calculated (dBA)		Noise Limits (dBA)			
	*Lmax	Leq	Day Lmax	Leq	Evening Lmax	Leq
Concrete Saw	70.8	63.8	N/A	N/A	N/A	N/A
Dozer	62.9	58.9	N/A	N/A	N/A	N/A
Tractor	65.2	61.2	N/A	N/A	N/A	N/A
Front End Loader	60.3	56.3	N/A	N/A	N/A	N/A
Backhoe	58.8	54.8	N/A	N/A	N/A	N/A
Total	71	67	N/A	N/A	N/A	N/A

*Calculated Lmax is the Loudest value.

Roadway Construction Noise Model (RCNM), Version 1.1

Report date: 3/27/2024
 Case Description: Anaheim The Mill - Demolition

---- Receptor #2 ----

Description	Land Use	Baselines (dBA)		
		Daytime	Evening	Night
MFHs to North	Residential	66.0	66.0	64.9

Description	Impact Device	Usage(%)	Equipment			
			Spec Lmax (dBA)	Actual Lmax (dBA)	Receptor Distance (feet)	Estimated Shielding (dBA)
Concrete Saw	No	20		89.6	91	0
Dozer	No	40		81.7	91	0
Tractor	No	40	84		91	0
Front End Loader	No	40		79.1	91	0
Backhoe	No	40		77.6	91	0

Equipment	Calculated (dBA)		Results Noise Limits (dBA)			
	*Lmax	Leq	Day Lmax	Leq	Evening Lmax	Leq
Concrete Saw	84.4	77.4	N/A	N/A	N/A	N/A
Dozer	76.5	72.5	N/A	N/A	N/A	N/A
Tractor	78.8	74.8	N/A	N/A	N/A	N/A
Front End Loader	73.9	70	N/A	N/A	N/A	N/A
Backhoe	72.4	68.4	N/A	N/A	N/A	N/A
Total	84	81	N/A	N/A	N/A	N/A

*Calculated Lmax is the Loudest value.

Roadway Construction Noise Model (RCNM),Version 1.1

Report date: 3/27/2024
 Case Description: Anaheim The Mill - Demolition

---- Receptor #3 ----

Description	Land Use	Baselines (dBA)		
		Daytime	Evening	Night
SFHs to East	Residential	66.3	66.3	62.2

Description	Impact Device	Usage(%)	Equipment			
			Spec Lmax (dBA)	Actual Lmax (dBA)	Receptor Distance (feet)	Estimated Shielding (dBA)
Concrete Saw	No	20		89.6	440	0
Dozer	No	40		81.7	440	0
Tractor	No	40	84		440	0
Front End Loader	No	40		79.1	440	0
Backhoe	No	40		77.6	440	0

Equipment	Calculated (dBA)		Results Noise Limits (dBA)			
	*Lmax	Leq	Day Lmax	Leq	Evening Lmax	Leq
Concrete Saw	70.7	63.7	N/A	N/A	N/A	N/A
Dozer	62.8	58.8	N/A	N/A	N/A	N/A
Tractor	65.1	61.1	N/A	N/A	N/A	N/A
Front End Loader	60.2	56.2	N/A	N/A	N/A	N/A
Backhoe	58.7	54.7	N/A	N/A	N/A	N/A
Total	71	67	N/A	N/A	N/A	N/A

*Calculated Lmax is the Loudest value.

Roadway Construction Noise Model (RCNM),Version 1.1

Report date: 3/27/2024
 Case Description: Anaheim The Mill - Site Preparation

---- Receptor #1 ----

Description	Land Use	Baselines (dBA)			Equipment		
		Daytime	Evening	Night	Spec Lmax (dBA)	Actual Lmax (dBA)	Receptor Distance (feet)
Packing District to West	Commercial	63.6	63.6	62			
Description	Impact Device	Usage(%)	Spec Lmax (dBA)	Actual Lmax (dBA)	Receptor Distance (feet)	Estimated Shielding (dBA)	
Grader	No	40	85		435	0	
Scraper	No	40		83.6	435	0	
Tractor	No	40	84		435	0	

Results

Equipment	Calculated (dBA)		Noise Limits (dBA)			
	*Lmax	Leq	Day Lmax	Leq	Evening Lmax	Leq
Grader	66.2	62.2	N/A	N/A	N/A	N/A
Scraper	64.8	60.8	N/A	N/A	N/A	N/A
Tractor	65.2	61.2	N/A	N/A	N/A	N/A
Total	66	66	N/A	N/A	N/A	N/A

*Calculated Lmax is the Loudest value.

---- Receptor #2 ----

Description	Land Use	Baselines (dBA)			Equipment		
		Daytime	Evening	Night	Spec Lmax (dBA)	Actual Lmax (dBA)	Receptor Distance (feet)
MFHs to North	Residential	66.0	66.0	64.9			
Description	Impact Device	Usage(%)	Spec Lmax (dBA)	Actual Lmax (dBA)	Receptor Distance (feet)	Estimated Shielding (dBA)	
Grader	No	40	85		91	0	
Scraper	No	40		83.6	91	0	
Tractor	No	40	84		91	0	

Results

Equipment	Calculated (dBA)		Noise Limits (dBA)			
	*Lmax	Leq	Day Lmax	Leq	Evening Lmax	Leq
Grader	79.8	76	N/A	N/A	N/A	N/A
Scraper	78.4	74	N/A	N/A	N/A	N/A
Tractor	78.8	75	N/A	N/A	N/A	N/A
Total	80	80	N/A	N/A	N/A	N/A

*Calculated Lmax is the Loudest value.

Roadway Construction Noise Model (RCNM), Version 1.1

Report date: 3/27/2024
 Case Description: Anaheim The Mill - Site Preparation

---- Receptor #3 ----

		Baselines (dBA)					
Description	Land Use	Daytime	Evening	Night			
SFHs to East	Residential	66.3	66.3	62.2			
					Equipment		
Description	Impact Device	Usage(%)	Spec Lmax (dBA)	Actual Lmax (dBA)	Receptor Distance (feet)	Estimated Shielding (dBA)	
Grader	No	40.0	85		440	0	
Scraper	No	40.0		83.6	440	0	
Tractor	No	40.0	84		440	0	
					Results		
		Calculated (dBA)		Noise Limits (dBA)			
Equipment	*Lmax	Leq	Day Lmax	Leq	Evening Lmax	Leq	
Grader	66.1	62.1	N/A	N/A	N/A	N/A	
Scraper	64.7	60.7	N/A	N/A	N/A	N/A	
Tractor	65.1	61.1	N/A	N/A	N/A	N/A	
Total	66	66	N/A	N/A	N/A	N/A	

***Calculated Lmax is the Loudest value.**

Roadway Construction Noise Model (RCNM), Version 1.1

Report date: 3/27/2024
 Case Description: Anaheim The Mill - Grading

---- Receptor #1 ----

Description	Land Use	Baselines (dBA)		
		Daytime	Evening	Night
Packing District to West	Commercial	63.6	63.6	62

Description	Impact Device	Usage(%)	Equipment			
			Spec Lmax (dBA)	Actual Lmax (dBA)	Receptor Distance (feet)	Estimated Shielding (dBA)
Grader	No	40	85		435	0
Dozer	No	40		81.7	435	0
Tractor	No	40	84		435	0
Front End Loader	No	40		79.1	435	0

Equipment	Calculated (dBA)		Results Noise Limits (dBA)			
	*Lmax	Leq	Day Lmax	Day Leq	Evening Lmax	Evening Leq
Grader	66.2	62.2	N/A	N/A	N/A	N/A
Dozer	62.9	58.9	N/A	N/A	N/A	N/A
Tractor	65.2	61.2	N/A	N/A	N/A	N/A
Front End Loader	60.3	56.3	N/A	N/A	N/A	N/A
Total	66	66	N/A	N/A	N/A	N/A

*Calculated Lmax is the Loudest value.

Roadway Construction Noise Model (RCNM), Version 1.1

Report date: 3/27/2024
 Case Description: Anaheim The Mill - Grading

---- Receptor #2 ----

Description	Land Use	Baselines (dBA)		
		Daytime	Evening	Night
MFHs to North	Residential	66.0	66.0	64.9

Description	Impact Device	Usage(%)	Equipment			
			Spec Lmax (dBA)	Actual Lmax (dBA)	Receptor Distance (feet)	Estimated Shielding (dBA)
Grader	No	40	85		91	0
Dozer	No	40		81.7	91	0
Tractor	No	40	84		91	0
Front End Loader	No	40		79.1	91	0

Equipment	Calculated (dBA)		Results			
	*Lmax	Leq	Day Lmax	Day Leq	Evening Lmax	Evening Leq
Grader	79.8	76	N/A	N/A	N/A	N/A
Dozer	76.5	73	N/A	N/A	N/A	N/A
Tractor	78.8	75	N/A	N/A	N/A	N/A
Front End Loader	73.9	70	N/A	N/A	N/A	N/A
Total	80	80	N/A	N/A	N/A	N/A

*Calculated Lmax is the Loudest value.

---- Receptor #3 ----

Description	Land Use	Baselines (dBA)		
		Daytime	Evening	Night
SFHs to East	Residential	66.3	66.3	62.2

Description	Impact Device	Usage(%)	Equipment			
			Spec Lmax (dBA)	Actual Lmax (dBA)	Receptor Distance (feet)	Estimated Shielding (dBA)
Grader	No	40	85		440	0
Dozer	No	40		81.7	440	0
Tractor	No	40	84		440	0
Front End Loader	No	40		79.1	440	0

Equipment	Calculated (dBA)		Results			
	*Lmax	Leq	Day Lmax	Day Leq	Evening Lmax	Evening Leq
Grader	66.1	62.1	N/A	N/A	N/A	N/A
Dozer	62.8	58.8	N/A	N/A	N/A	N/A
Tractor	65.1	61.1	N/A	N/A	N/A	N/A
Front End Loader	60.2	56.2	N/A	N/A	N/A	N/A
Total	66	66	N/A	N/A	N/A	N/A

*Calculated Lmax is the Loudest value.

Roadway Construction Noise Model (RCNM), Version 1.1

Report date: 3/27/2024
 Case Description: Anaheim The Mill - Building Construction

---- Receptor #1 ----

Description	Land Use	Baselines (dBA)		
		Daytime	Evening	Night
Packing District to West	Commercial	63.6	63.6	62.0

Description	Impact Device	Usage(%)	Equipment			
			Spec Lmax (dBA)	Actual Lmax (dBA)	Receptor Distance (feet)	Estimated Shielding (dBA)
Crane	No	16		80.6	435	0
Gradall	No	40		83.4	435	0
Gradall	No	40		83.4	435	0
Generator	No	50		80.6	435	0
Tractor	No	40	84		435	0
Welder / Torch	No	40		74	435	0
Welder / Torch	No	40		74	435	0
Welder / Torch	No	40		74	435	0

Results

Equipment	Calculated (dBA)		Noise Limits (dBA)			
	*Lmax	Leq	Day Lmax	Day Leq	Evening Lmax	Evening Leq
Crane	61.8	53.8	N/A	N/A	N/A	N/A
Gradall	64.6	60.6	N/A	N/A	N/A	N/A
Gradall	64.6	60.6	N/A	N/A	N/A	N/A
Generator	61.8	58.8	N/A	N/A	N/A	N/A
Tractor	65.2	61.2	N/A	N/A	N/A	N/A
Welder / Torch	55.2	51.2	N/A	N/A	N/A	N/A
Welder / Torch	55.2	51.2	N/A	N/A	N/A	N/A
Welder / Torch	55.2	51.2	N/A	N/A	N/A	N/A
Total	65	67	N/A	N/A	N/A	N/A

*Calculated Lmax is the Loudest value.

Roadway Construction Noise Model (RCNM), Version 1.1

Report date: 3/27/2024
 Case Description: Anaheim The Mill - Building Construction

---- Receptor #2 ----

Description	Land Use	Baselines (dBA)		
		Daytime	Evening	Night
MFHs to North	Residential	66.0	66.0	64.9

Description	Impact Device	Usage(%)	Equipment		Receptor Distance (feet)	Estimated Shielding (dBA)
			Spec Lmax (dBA)	Actual Lmax (dBA)		
Crane	No	16		80.6	91	0
Gradall	No	40		83.4	91	0
Gradall	No	40		83.4	91	0
Generator	No	50		80.6	91	0
Tractor	No	40	84		91	0
Welder / Torch	No	40		74	91	0
Welder / Torch	No	40		74	91	0
Welder / Torch	No	40		74	91	0

Results

Equipment	Calculated (dBA)		Noise Limits (dBA)			
	*Lmax	Leq	Day		Evening	
			Lmax	Leq	Lmax	Leq
Crane	75.3	67.4	N/A	N/A	N/A	N/A
Gradall	78.2	74.2	N/A	N/A	N/A	N/A
Gradall	78.2	74.2	N/A	N/A	N/A	N/A
Generator	75.4	72.4	N/A	N/A	N/A	N/A
Tractor	78.8	74.8	N/A	N/A	N/A	N/A
Welder / Torch	68.8	64.8	N/A	N/A	N/A	N/A
Welder / Torch	68.8	64.8	N/A	N/A	N/A	N/A
Welder / Torch	68.8	64.8	N/A	N/A	N/A	N/A
Total	79	81	N/A	N/A	N/A	N/A

*Calculated Lmax is the Loudest value.

Roadway Construction Noise Model (RCNM), Version 1.1

Report date: 3/27/2024
 Case Description: Anaheim The Mill - Building Construction

---- Receptor #3 ----

		Baselines (dBA)					
Description	Land Use	Daytime	Evening	Night			
SFHs to East	Residential	66.3	66.3	62.2			
		Equipment					
Description	Impact Device	Usage(%)	Spec Lmax (dBA)	Actual Lmax (dBA)	Receptor Distance (feet)	Estimated Shielding (dBA)	
Crane	No	16		80.6	440	0	
Gradall	No	40		83.4	440	0	
Gradall	No	40		83.4	440	0	
Generator	No	50		80.6	440	0	
Tractor	No	40	84		440	0	
Welder / Torch	No	40		74	440	0	
Welder / Torch	No	40		74	440	0	
Welder / Torch	No	40		74	440	0	

		Calculated (dBA)		Results Noise Limits (dBA)			
Equipment	*Lmax	Leq	Day Lmax	Leq	Evening Lmax	Leq	
Crane	61.7	53.7	N/A	N/A	N/A	N/A	
Gradall	64.5	60.5	N/A	N/A	N/A	N/A	
Gradall	64.5	60.5	N/A	N/A	N/A	N/A	
Generator	61.7	58.7	N/A	N/A	N/A	N/A	
Tractor	65.1	61.1	N/A	N/A	N/A	N/A	
Welder / Torch	55.1	51.1	N/A	N/A	N/A	N/A	
Welder / Torch	55.1	51.1	N/A	N/A	N/A	N/A	
Welder / Torch	55.1	51.1	N/A	N/A	N/A	N/A	
Total	65	67	N/A	N/A	N/A	N/A	

*Calculated Lmax is the Loudest value.

Roadway Construction Noise Model (RCNM), Version 1.1

Report date: 3/27/2024
 Case Description: Anaheim The Mill - Paving

---- Receptor #1 ----

Description	Land Use	Baselines (dBA)		
		Daytime	Evening	Night
Packing District to West	Commercial	63.6	63.6	62.0

Description	Impact Device	Usage(%)	Equipment			
			Spec Lmax (dBA)	Actual Lmax (dBA)	Receptor Distance (feet)	Estimated Shielding (dBA)
Concrete Mixer Truck	No	40		78.8	435	0
Paver	No	50		77.2	435	0
Paver	No	50		77.2	435	0
Roller	No	20		80	435	0
Roller	No	20		80	435	0
Tractor	No	40	84		435	0

Equipment	Calculated (dBA)		Results			
	*Lmax	Leq	Day Lmax	Day Leq	Evening Lmax	Evening Leq
Concrete Mixer Truck	60.0	56.0	N/A	N/A	N/A	N/A
Paver	58.4	55.4	N/A	N/A	N/A	N/A
Paver	58.4	55.4	N/A	N/A	N/A	N/A
Roller	61.2	54.2	N/A	N/A	N/A	N/A
Roller	61.2	54.2	N/A	N/A	N/A	N/A
Tractor	65.2	61.2	N/A	N/A	N/A	N/A
Total	65	65	N/A	N/A	N/A	N/A

*Calculated Lmax is the Loudest value.

Roadway Construction Noise Model (RCNM), Version 1.1

Report date: 3/27/2024
 Case Description: Anaheim The Mill - Paving

---- Receptor #2 ----

Description	Land Use	Baselines (dBA)		
		Daytime	Evening	Night
MFHs to North	Residential	66.0	66.0	64.9

Description	Impact Device	Usage(%)	Equipment			
			Spec Lmax (dBA)	Actual Lmax (dBA)	Receptor Distance (feet)	Estimated Shielding (dBA)
Concrete Mixer Truck	No	40		78.8	91	0
Paver	No	50		77.2	91	0
Paver	No	50		77.2	91	0
Roller	No	20		80	91	0
Roller	No	20		80	91	0
Tractor	No	40	84		91	0

Equipment	Calculated (dBA)		Results Noise Limits (dBA)			
	*Lmax	Leq	Day Lmax	Day Leq	Evening Lmax	Evening Leq
Concrete Mixer Truck	73.6	70	N/A	N/A	N/A	N/A
Paver	72.0	69.0	N/A	N/A	N/A	N/A
Paver	72.0	69.0	N/A	N/A	N/A	N/A
Roller	74.8	67.8	N/A	N/A	N/A	N/A
Roller	74.8	67.8	N/A	N/A	N/A	N/A
Tractor	78.8	74.8	N/A	N/A	N/A	N/A
Total	79	78	N/A	N/A	N/A	N/A

*Calculated Lmax is the Loudest value.

Roadway Construction Noise Model (RCNM), Version 1.1

Report date: 3/27/2024
 Case Description: Anaheim The Mill - Paving

---- Receptor #3 ----

Description	Land Use	Baselines (dBA)		
		Daytime	Evening	Night
SFHs to East	Residential	66.3	66.3	62.2

Description	Impact Device	Usage(%)	Equipment			
			Spec Lmax (dBA)	Actual Lmax (dBA)	Receptor Distance (feet)	Estimated Shielding (dBA)
Concrete Mixer Truck	No	40		78.8	440	0
Paver	No	50		77.2	440	0
Paver	No	50		77.2	440	0
Roller	No	20		80	440	0
Roller	No	20		80	440	0
Tractor	No	40	84		440	0

Equipment	Calculated (dBA)		Results			
	*Lmax	Leq	Day		Noise Limits (dBA)	
			Lmax	Leq	Lmax	Leq
Concrete Mixer Truck	59.9	55.9	N/A	N/A	N/A	N/A
Paver	58.3	55.3	N/A	N/A	N/A	N/A
Paver	58.3	55.3	N/A	N/A	N/A	N/A
Roller	61.1	54.1	N/A	N/A	N/A	N/A
Roller	61.1	54.1	N/A	N/A	N/A	N/A
Tractor	65.1	61.1	N/A	N/A	N/A	N/A
Total	65	65	N/A	N/A	N/A	N/A

*Calculated Lmax is the Loudest value.

Roadway Construction Noise Model (RCNM), Version 1.1

Report date: 3/27/2024
 Case Description: Anaheim The Mill - Painting

---- Receptor #1 ----

Description	Land Use	Baselines (dBA)		
		Daytime	Evening	Night
Packing District to West	Commercial	63.6	63.6	62.0

Description	Impact Device	Usage(%)	Equipment			
			Spec Lmax (dBA)	Actual Lmax (dBA)	Receptor Distance (feet)	Estimated Shielding (dBA)
Compressor (air)	No	40		77.7	435	0

Equipment	Total	Calculated (dBA)		Results			
		*Lmax	Leq	Day		Noise Limits (dBA) Evening	
		Lmax	Leq	Lmax	Leq	Lmax	Leq
Compressor (air)		58.9	54.9	N/A	N/A	N/A	N/A
	Total	59	55	N/A	N/A	N/A	N/A

*Calculated Lmax is the Loudest value.

---- Receptor #2 ----

Description	Land Use	Baselines (dBA)		
		Daytime	Evening	Night
MFHs to North	Residential	66.0	66.0	64.9

Description	Impact Device	Usage(%)	Equipment			
			Spec Lmax (dBA)	Actual Lmax (dBA)	Receptor Distance (feet)	Estimated Shielding (dBA)
Compressor (air)	No	40		77.7	91	0

Equipment	Total	Calculated (dBA)		Results			
		*Lmax	Leq	Day		Noise Limits (dBA) Evening	
		Lmax	Leq	Lmax	Leq	Lmax	Leq
Compressor (air)		72.5	68.5	N/A	N/A	N/A	N/A
	Total	73	69	N/A	N/A	N/A	N/A

*Calculated Lmax is the Loudest value.

Roadway Construction Noise Model (RCNM),Version 1.1

Report date: 3/27/2024
 Case Description: Anaheim The Mill - Painting

---- Receptor #3 ----

Description	Land Use	Baselines (dBA)		
		Daytime	Evening	Night
SFHs to East	Residential	66.3	66.3	62.2

Description	Impact Device	Usage(%)	Equipment			
			Spec Lmax (dBA)	Actual Lmax (dBA)	Receptor Distance (feet)	Estimated Shielding (dBA)
Compressor (air)	No	40		77.7	440	0

Equipment	Calculated (dBA)	Results					
		Day		Noise Limits (dBA)			
		*Lmax	Leq	Lmax	Leq	Lmax	Leq
Compressor (air)	58.8	54.8	N/A	N/A	N/A	N/A	N/A
Total	59	55	N/A	N/A	N/A	N/A	N/A

*Calculated Lmax is the Loudest value.

FHWA-RD-77-108 HIGHWAY TRAFFIC NOISE PREDICTION MODEL

Scenario: EXISTING CONDITIONS

Project: Anaheim The Mill
Site Conditions: Soft

Vehicle Type	Vehicle Mix 1 (Local)			Vehicle Mix 2			Vehicle Mix 3 (I-5)		
	Day	Evening	Night	Day	Evening	Night	Day	Evening	Night
Automobiles	67.10%	12.60%	15.50%	69.50%	12.90%	9.60%	59.66%	8.14%	22.60%
Medium Trucks	1.30%	0.20%	0.50%	1.44%	0.06%	1.50%	3.59%	0.60%	1.79%
Heavy Trucks	0.60%	0.10%	0.30%	2.40%	0.10%	2.50%	1.85%	0.33%	1.45%
			1.00%			5.00%			3.62%

Road Name: Anaheim Boulevard

Segment: South of Santa Ana Street

Average Daily Traffic: 18050 Vehicles Vehicle Speed: 30 MPH Vehicle Mix: 2 Roadway Classification: Primary Arterial

NOISE PARAMETERS AT 70 FEET FROM CENTERLINE (Equiv. Lane Dist: 63.25 ft)											
Vehicle Type	Noise Adjustments			Unmitigated Noise Levels						Centerline Distance to Noise Contour (in feet)	
	REMEL Traffic Adj.	Dist Adj.	Finite Adj.	Leq Peak	Leq Day	Leq Eve.	Leq Night	Ldn	CNEL	Ldn	CNEL
Automobiles	62.51	2.13	-1.63	61.80	59.43	58.14	52.08	60.52	61.15	70 dBA:	22
Medium Trucks	73.11	-12.74	-1.63	57.54	38.33	30.55	39.76	45.91	45.95	65 dBA:	47
Heavy Trucks	80.26	-10.52	-1.63	66.90	49.91	42.13	51.34	57.50	57.53	60 dBA:	101
Total: 68.44 59.92 58.25 54.87 62.37 62.81											

Road Name: Claudina Street

Segment: North of Santa Ana Street

Average Daily Traffic: 1150 Vehicles Vehicle Speed: 25 MPH Vehicle Mix: 1 Roadway Classification: Local

NOISE PARAMETERS AT 40 FEET FROM CENTERLINE (Equiv. Lane Dist: 39.38 ft)											
Vehicle Type	Noise Adjustments			Unmitigated Noise Levels						Centerline Distance to Noise Contour (in feet)	
	REMEL Traffic Adj.	Dist Adj.	Finite Adj.	Leq Peak	Leq Day	Leq Eve.	Leq Night	Ldn	CNEL	Ldn	CNEL
Automobiles	59.44	-8.81	1.45	50.88	48.36	47.11	43.24	50.78	51.26	70 dBA:	2
Medium Trucks	71.09	-25.67	1.45	45.67	26.02	23.91	23.12	30.00	30.28	65 dBA:	5
Heavy Trucks	78.74	-28.68	1.45	50.31	27.30	25.54	25.54	32.19	32.44	60 dBA:	10
Total: 54.26 48.42 47.16 43.36 50.88 51.35											

Road Name: Philadelphia Street

Segment: North of Santa Ana Street

Average Daily Traffic: 550 Vehicles Vehicle Speed: 25 MPH Vehicle Mix: 1 Roadway Classification: Local

NOISE PARAMETERS AT 30 FEET FROM CENTERLINE (Equiv. Lane Dist: 29.17 ft)											
Vehicle Type	Noise Adjustments			Unmitigated Noise Levels						Centerline Distance to Noise Contour (in feet)	
	REMEL Traffic Adj.	Dist Adj.	Finite Adj.	Leq Peak	Leq Day	Leq Eve.	Leq Night	Ldn	CNEL	Ldn	CNEL
Automobiles	59.44	-12.01	3.41	49.63	47.11	45.87	41.99	49.54	50.01	70 dBA:	1
Medium Trucks	71.09	-28.87	3.41	44.42	24.77	22.66	21.87	28.75	29.03	65 dBA:	3
Heavy Trucks	78.74	-31.88	3.41	49.07	26.06	24.29	24.29	30.95	31.19	60 dBA:	6
Total: 53.02 47.17 45.92 42.11 49.63 50.10											

FHWA-RD-77-108 HIGHWAY TRAFFIC NOISE PREDICTION MODEL

Scenario: EXISTING CONDITIONS

Project: Anaheim The Mill
Site Conditions: Soft

Road Name:	Olive Street		Segment:		North of Broadway		Roadway Classification: Collector							
	Average Daily Traffic:	4050 Vehicles	Vehicle Speed:	30 MPH	Vehicle Mix:	1	NOISE PARAMETERS AT 35 FEET FROM CENTERLINE (Equiv. Lane Dist: 33.82 ft)	Centerline Distance to Noise Contour (in feet)						
Vehicle Type	REMEL Traffic Adj.	Dist Adj.	Finite Adj.	Leq Peak	Leq Day	Leq Eve.	Leq Night	Ldn	CNEL					
Automobiles	62.51	-4.13	2.44	-1.20	59.62	57.10	55.85	51.98	59.52	60.00				
Medium Trucks	73.11	-20.99	2.44	-1.20	53.37	33.71	31.60	30.81	37.69	37.97				
Heavy Trucks	80.26	-24.00	2.44	-1.20	57.50	34.49	32.73	32.73	39.38	39.63				
Total:									62.29	57.14	55.89	52.07	59.59	60.07

Road Name:	Olive Street		Segment:		North of Santa Ana Street		Roadway Classification: Collector							
	Average Daily Traffic:	3350 Vehicles	Vehicle Speed:	30 MPH	Vehicle Mix:	1	NOISE PARAMETERS AT 50 FEET FROM CENTERLINE (Equiv. Lane Dist: 49.18 ft)	Centerline Distance to Noise Contour (in feet)						
Vehicle Type	REMEL Traffic Adj.	Dist Adj.	Finite Adj.	Leq Peak	Leq Day	Leq Eve.	Leq Night	Ldn	CNEL					
Automobiles	62.51	-4.96	0.00	-1.20	56.36	53.83	52.59	48.72	56.26	56.74				
Medium Trucks	73.11	-21.82	0.00	-1.20	50.10	30.45	28.34	27.55	34.43	34.71				
Heavy Trucks	80.26	-24.83	0.00	-1.20	54.24	31.23	29.47	29.47	36.12	36.37				
Total:									59.03	53.88	52.63	48.80	56.33	56.80

Road Name:	Olive Street		Segment:		South of Santa Ana Street		Roadway Classification: Collector							
	Average Daily Traffic:	3550 Vehicles	Vehicle Speed:	30 MPH	Vehicle Mix:	1	NOISE PARAMETERS AT 45 FEET FROM CENTERLINE (Equiv. Lane Dist: 44.09 ft)	Centerline Distance to Noise Contour (in feet)						
Vehicle Type	REMEL Traffic Adj.	Dist Adj.	Finite Adj.	Leq Peak	Leq Day	Leq Eve.	Leq Night	Ldn	CNEL					
Automobiles	62.51	-4.71	0.72	-1.20	57.32	54.80	53.55	49.68	57.22	57.70				
Medium Trucks	73.11	-21.56	0.72	-1.20	51.07	31.41	29.31	28.51	35.39	35.67				
Heavy Trucks	80.26	-24.57	0.72	-1.20	55.20	32.19	30.43	30.43	37.08	37.33				
Total:									60.00	54.84	53.59	49.77	57.29	57.77

Road Name:	Broadway		Segment:		West of Olive Street		Roadway Classification: Secondary Arterial							
	Average Daily Traffic:	12700 Vehicles	Vehicle Speed:	35 MPH	Vehicle Mix:	2	NOISE PARAMETERS AT 50 FEET FROM CENTERLINE (Equiv. Lane Dist: 40.73 ft)	Centerline Distance to Noise Contour (in feet)						
Vehicle Type	REMEL Traffic Adj.	Dist Adj.	Finite Adj.	Leq Peak	Leq Day	Leq Eve.	Leq Night	Ldn	CNEL					
Automobiles	65.11	-0.07	1.23	-1.20	65.07	62.70	61.41	55.35	63.78	64.41				
Medium Trucks	74.83	-14.94	1.23	-1.20	59.92	40.72	32.93	42.14	48.30	48.33				
Heavy Trucks	80.05	-12.72	1.23	-1.20	67.36	50.37	42.59	51.80	57.95	57.99				
Total:									69.84	62.97	61.47	57.08	64.89	65.39

FHWA-RD-77-108 HIGHWAY TRAFFIC NOISE PREDICTION MODEL

Scenario: EXISTING CONDITIONS

Project: Anaheim The Mill
Site Conditions: Soft

Road Name: **Broadway** Segment: **East of Olive Street**
 Average Daily Traffic: 11550 Vehicles Vehicle Speed: 35 MPH Vehicle Mix: 2 Roadway Classification: Secondary Arterial

Vehicle Type	NOISE PARAMETERS AT 60 FEET FROM CENTERLINE (Equiv. Lane Dist: 52.53 ft)				Centerline Distance to Noise Contour (in feet)														
	RESEL Traffic Adj.	Dist Adj.	Finite Adj	Leq Peak	Leq Day	Leq Eve.	Leq Night	Ldn	CNEL										
Automobiles	65.11	-0.48	-0.42	-1.20	63.00	60.63	59.34	53.28	61.71	62.35	70 dBA:	20	22						
Medium Trucks	74.83	-15.35	-0.42	-1.20	57.85	38.65	30.86	40.07	46.23	46.26	65 dBA:	43	46						
Heavy Trucks	80.05	-13.13	-0.42	-1.20	65.29	48.30	40.52	49.73	55.88	55.92	60 dBA:	92	100						
Total:											67.77	60.90	59.40	55.01	62.82	63.32	55 dBA:	199	215

FHWA-RD-77-108 HIGHWAY TRAFFIC NOISE PREDICTION MODEL

Scenario: EXISTING WITH PROJECT CONDITIONS

Project: Anaheim The Mill
Site Conditions: Soft

Vehicle Type	Vehicle Mix 1 (Local)			Vehicle Mix 2			Vehicle Mix 3 (I-5)			
	Day	Evening	Night	Day	Evening	Night	Day	Evening	Night	
Automobiles	67.10%	12.60%	15.50%	97.00%	69.50%	12.90%	9.60%	59.66%	8.14%	22.60%
Medium Trucks	1.30%	0.20%	0.50%	2.00%	1.44%	0.06%	1.50%	3.59%	0.60%	1.79%
Heavy Trucks	0.60%	0.10%	0.30%	1.00%	2.40%	0.10%	2.50%	1.85%	0.33%	1.45%
										3.62%

Road Name: Anaheim Boulevard

Segment: South of Santa Ana Street

Average Daily Traffic: 18124 Vehicles Vehicle Speed: 30 MPH Vehicle Mix: 2 Roadway Classification: Primary Arterial

Vehicle Type	Noise Adjustments			Unmitigated Noise Levels			Centerline Distance to Noise Contour (in feet)			
	REMEL Traffic Adj.	Dist Adj.	Finite Adj.	Leq Peak	Leq Day	Leq Eve.	Leq Night	Ldn	CNEL	
Automobiles	62.51	2.14	-1.63	-1.20	61.82	59.45	58.16	52.10	60.53	61.16
Medium Trucks	73.11	-12.72	-1.63	-1.20	57.56	38.35	30.57	39.78	45.93	45.96
Heavy Trucks	80.26	-10.50	-1.63	-1.20	66.92	49.93	42.15	51.36	57.51	57.55
Total:					68.46	59.94	58.27	54.89	62.39	62.82

Road Name: Claudina Street

Segment: North of Santa Ana Street

Average Daily Traffic: 1205 Vehicles Vehicle Speed: 25 MPH Vehicle Mix: 1 Roadway Classification: Local

Vehicle Type	Noise Adjustments			Unmitigated Noise Levels			Centerline Distance to Noise Contour (in feet)			
	REMEL Traffic Adj.	Dist Adj.	Finite Adj.	Leq Peak	Leq Day	Leq Eve.	Leq Night	Ldn	CNEL	
Automobiles	59.44	-8.61	1.45	-1.20	51.09	48.56	47.32	43.45	50.99	51.47
Medium Trucks	71.09	-25.46	1.45	-1.20	45.87	26.22	24.11	23.32	30.20	30.48
Heavy Trucks	78.74	-28.47	1.45	-1.20	50.52	27.51	25.75	25.75	32.40	32.64
Total:					54.47	48.62	47.37	43.56	51.08	51.56

Road Name: Philadelphia Street

Segment: North of Santa Ana Street

Average Daily Traffic: 624 Vehicles Vehicle Speed: 25 MPH Vehicle Mix: 1 Roadway Classification: Local

Vehicle Type	Noise Adjustments			Unmitigated Noise Levels			Centerline Distance to Noise Contour (in feet)			
	REMEL Traffic Adj.	Dist Adj.	Finite Adj.	Leq Peak	Leq Day	Leq Eve.	Leq Night	Ldn	CNEL	
Automobiles	59.44	-11.47	3.41	-1.20	50.18	47.65	46.41	42.54	50.08	50.56
Medium Trucks	71.09	-28.33	3.41	-1.20	44.97	25.32	23.21	22.42	29.30	29.58
Heavy Trucks	78.74	-31.34	3.41	-1.20	49.61	26.60	24.84	24.84	31.49	31.74
Total:					53.56	47.71	46.46	42.65	50.18	50.65

FHWA-RD-77-108 HIGHWAY TRAFFIC NOISE PREDICTION MODEL

Scenario: EXISTING WITH PROJECT CONDITIONS

Project: Anaheim The Mill
Site Conditions: Soft

Road Name:	Olive Street		Segment:		North of Broadway		Roadway Classification: Collector							
	Average Daily Traffic:	4124 Vehicles	Vehicle Speed:	30 MPH	Vehicle Mix:	1	NOISE PARAMETERS AT 35 FEET FROM CENTERLINE (Equiv. Lane Dist: 33.82 ft)	Centerline Distance to Noise Contour (in feet)						
Vehicle Type	REMEL Traffic Adj.	Dist Adj.	Finite Adj.	Leq Peak	Leq Day	Leq Eve.	Leq Night	Ldn	CNEL					
Automobiles	62.51	-4.06	2.44	-1.20	59.70	57.17	55.93	52.06	59.60	60.08				
Medium Trucks	73.11	-20.91	2.44	-1.20	53.44	33.79	31.68	30.89	37.77	38.05				
Heavy Trucks	80.26	-23.92	2.44	-1.20	57.58	34.57	32.81	32.81	39.46	39.71				
Total:									62.37	57.22	55.97	52.14	59.67	60.15

Road Name:	Olive Street		Segment:		North of Santa Ana Street		Roadway Classification: Collector							
	Average Daily Traffic:	3405 Vehicles	Vehicle Speed:	30 MPH	Vehicle Mix:	1	NOISE PARAMETERS AT 50 FEET FROM CENTERLINE (Equiv. Lane Dist: 49.18 ft)	Centerline Distance to Noise Contour (in feet)						
Vehicle Type	REMEL Traffic Adj.	Dist Adj.	Finite Adj.	Leq Peak	Leq Day	Leq Eve.	Leq Night	Ldn	CNEL					
Automobiles	62.51	-4.89	0.00	-1.20	56.43	53.90	52.66	48.79	56.33	56.81				
Medium Trucks	73.11	-21.74	0.00	-1.20	50.17	30.52	28.41	27.62	34.50	34.78				
Heavy Trucks	80.26	-24.76	0.00	-1.20	54.31	31.30	29.54	29.54	36.19	36.44				
Total:									59.10	53.95	52.70	48.87	56.40	56.88

Road Name:	Olive Street		Segment:		South of Santa Ana Street		Roadway Classification: Collector							
	Average Daily Traffic:	3624 Vehicles	Vehicle Speed:	30 MPH	Vehicle Mix:	1	NOISE PARAMETERS AT 45 FEET FROM CENTERLINE (Equiv. Lane Dist: 44.09 ft)	Centerline Distance to Noise Contour (in feet)						
Vehicle Type	REMEL Traffic Adj.	Dist Adj.	Finite Adj.	Leq Peak	Leq Day	Leq Eve.	Leq Night	Ldn	CNEL					
Automobiles	62.51	-4.62	0.72	-1.20	57.41	54.89	53.64	49.77	57.31	57.79				
Medium Trucks	73.11	-21.47	0.72	-1.20	51.16	31.50	29.39	28.60	35.48	35.76				
Heavy Trucks	80.26	-24.49	0.72	-1.20	55.29	32.28	30.52	30.52	37.17	37.42				
Total:									60.08	54.93	53.68	49.86	57.38	57.86

Road Name:	Broadway		Segment:		West of Olive Street		Roadway Classification: Secondary Arterial							
	Average Daily Traffic:	12755 Vehicles	Vehicle Speed:	35 MPH	Vehicle Mix:	2	NOISE PARAMETERS AT 50 FEET FROM CENTERLINE (Equiv. Lane Dist: 40.73 ft)	Centerline Distance to Noise Contour (in feet)						
Vehicle Type	REMEL Traffic Adj.	Dist Adj.	Finite Adj.	Leq Peak	Leq Day	Leq Eve.	Leq Night	Ldn	CNEL					
Automobiles	65.11	-0.05	1.23	-1.20	65.09	62.72	61.43	55.37	63.80	64.43				
Medium Trucks	74.83	-14.92	1.23	-1.20	59.94	40.73	32.95	42.16	48.32	48.35				
Heavy Trucks	80.05	-12.70	1.23	-1.20	67.38	50.39	42.61	51.82	57.97	58.00				
Total:									69.86	62.99	61.49	57.10	64.91	65.41

FHWA-RD-77-108 HIGHWAY TRAFFIC NOISE PREDICTION MODEL

Scenario: EXISTING WITH PROJECT CONDITIONS

Project: Anaheim The Mill
Site Conditions: Soft

Road Name: **Broadway** Segment: **East of Olive Street**
 Average Daily Traffic: 11587 Vehicles Vehicle Speed: 35 MPH Vehicle Mix: 2 Roadway Classification: Secondary Arterial

Vehicle Type	NOISE PARAMETERS AT 60 FEET FROM CENTERLINE (Equiv. Lane Dist: 52.53 ft)				Centerline Distance to Noise Contour (in feet)						
	REME L Traffic Adj.	Dist Adj.	Finite Adj.	Leq Peak	Leq Day	Leq Eve.	Leq Night	Ldn	CNEL		
Automobiles	65.11	-0.47	-0.42	-1.20	63.02	60.64	59.35	53.30	61.73	62.36	70 dBA: 20
Medium Trucks	74.83	-15.34	-0.42	-1.20	57.87	38.66	30.88	40.09	46.24	46.28	65 dBA: 43
Heavy Trucks	80.05	-13.12	-0.42	-1.20	65.30	48.32	40.53	49.74	55.90	55.93	60 dBA: 93
Total:											
					67.79	60.92	59.41	55.03	62.83	63.34	55 dBA: 200

FHWA-RD-77-108 HIGHWAY TRAFFIC NOISE PREDICTION MODEL

Scenario: OPENING YEAR 2027 WITHOUT PROJECT CONDITIONS

Project: Anaheim The Mill
Site Conditions: Soft

Vehicle Type	Vehicle Mix 1 (Local)			Vehicle Mix 2			Vehicle Mix 3 (I-5)		
	Day	Evening	Night	Day	Evening	Night	Day	Evening	Night
Automobiles	67.10%	12.60%	15.50%	69.50%	12.90%	9.60%	59.66%	8.14%	22.60%
Medium Trucks	1.30%	0.20%	0.50%	1.44%	0.06%	1.50%	3.59%	0.60%	1.79%
Heavy Trucks	0.60%	0.10%	0.30%	2.40%	0.10%	2.50%	1.85%	0.33%	1.45%
			1.00%			5.00%			3.62%

Road Name: Anaheim Boulevard

Segment: South of Santa Ana Street

Average Daily Traffic: 18800 Vehicles Vehicle Speed: 30 MPH Vehicle Mix: 2 Roadway Classification: Primary Arterial

Vehicle Type	NOISE PARAMETERS AT 70 FEET FROM CENTERLINE			Unmitigated Noise Levels			Centerline Distance to Noise Contour (in feet)		
	REMEL Traffic Adj.	Dist Adj.	Finite Adj.	Leq Peak	Leq Day	Leq Eve.	Leq Night	Ldn	CNEL
Automobiles	62.51	-1.63	-1.20	61.98	59.61	58.32	52.26	60.69	61.32
Medium Trucks	73.11	-1.63	-1.20	57.72	38.51	30.73	39.93	46.09	46.12
Heavy Trucks	80.26	-10.35	-1.63	67.08	50.09	42.31	51.52	57.67	57.71
Total:				68.62	60.10	58.43	55.05	62.55	62.98

Road Name: Claudina Street

Segment: North of Santa Ana Street

Average Daily Traffic: 1200 Vehicles Vehicle Speed: 25 MPH Vehicle Mix: 1 Roadway Classification: Local

Vehicle Type	NOISE PARAMETERS AT 40 FEET FROM CENTERLINE			Unmitigated Noise Levels			Centerline Distance to Noise Contour (in feet)		
	REMEL Traffic Adj.	Dist Adj.	Finite Adj.	Leq Peak	Leq Day	Leq Eve.	Leq Night	Ldn	CNEL
Automobiles	59.44	-8.63	1.45	51.07	48.54	47.30	43.43	50.97	51.45
Medium Trucks	71.09	-25.48	1.45	45.86	26.20	24.10	23.30	30.18	30.46
Heavy Trucks	78.74	-28.49	1.45	50.50	27.49	25.73	25.73	32.38	32.63
Total:				54.45	48.60	47.35	43.54	51.06	51.54

Road Name: Philadelphia Street

Segment: North of Santa Ana Street

Average Daily Traffic: 600 Vehicles Vehicle Speed: 25 MPH Vehicle Mix: 1 Roadway Classification: Local

Vehicle Type	NOISE PARAMETERS AT 30 FEET FROM CENTERLINE			Unmitigated Noise Levels			Centerline Distance to Noise Contour (in feet)		
	REMEL Traffic Adj.	Dist Adj.	Finite Adj.	Leq Peak	Leq Day	Leq Eve.	Leq Night	Ldn	CNEL
Automobiles	59.44	-11.64	3.41	50.01	47.49	46.24	42.37	49.91	50.39
Medium Trucks	71.09	-28.49	3.41	44.80	25.15	23.04	22.25	29.13	29.41
Heavy Trucks	78.74	-31.50	3.41	49.44	26.43	24.67	24.67	31.32	31.57
Total:				53.39	47.55	46.29	42.49	50.01	50.48

FHWA-RD-77-108 HIGHWAY TRAFFIC NOISE PREDICTION MODEL

Scenario: **OPENING YEAR 2027 WITHOUT PROJECT CONDITIONS**

Project: **Anaheim The Mill**
Site Conditions: **Soft**

Road Name: Olive Street	Segment: North of Broadway	Vehicle Speed: 30 MPH		Vehicle Mix: 1		Roadway Classification: Collector													
Average Daily Traffic: 4250 Vehicles	NOISE PARAMETERS AT 35 FEET FROM CENTERLINE (Equiv. Lane Dist: 33.82 ft)					Centerline Distance to													
	Noise Adjustments			Unmitigated Noise Levels			Noise Contour (in feet)												
Vehicle Type	REML Traffic Adj.	Dist Adj.	Finite Adj.	Leq Peak	Leq Day	Leq Eve.	Leq Night	Ldn	CNEL										
Automobiles	62.51	-3.92	2.44	-1.20	59.83	57.31	56.06	52.19	59.73	60.21	70 dBA:	7	8						
Medium Trucks	73.11	-20.78	2.44	-1.20	53.57	33.92	31.81	31.02	37.90	38.18	65 dBA:	16	17						
Heavy Trucks	80.26	-23.79	2.44	-1.20	57.71	34.70	32.94	32.94	39.59	39.84	60 dBA:	34	37						
Total:											62.50	57.35	56.10	52.28	59.80	60.28	55 dBA:	73	79

Road Name: Olive Street	Segment: North of Santa Ana Street	Vehicle Speed: 30 MPH		Vehicle Mix: 1		Roadway Classification: Collector													
Average Daily Traffic: 3500 Vehicles	NOISE PARAMETERS AT 50 FEET FROM CENTERLINE (Equiv. Lane Dist: 49.18 ft)					Centerline Distance to													
	Noise Adjustments			Unmitigated Noise Levels			Noise Contour (in feet)												
Vehicle Type	REML Traffic Adj.	Dist Adj.	Finite Adj.	Leq Peak	Leq Day	Leq Eve.	Leq Night	Ldn	CNEL										
Automobiles	62.51	-4.77	0.00	-1.20	56.55	54.02	52.78	48.91	56.45	56.93	70 dBA:	6	7						
Medium Trucks	73.11	-21.63	0.00	-1.20	50.29	30.64	28.53	27.74	34.62	34.90	65 dBA:	14	15						
Heavy Trucks	80.26	-24.64	0.00	-1.20	54.43	31.42	29.66	29.66	36.31	36.56	60 dBA:	29	32						
Total:											59.22	54.07	52.82	48.99	56.52	56.99	55 dBA:	63	68

Road Name: Olive Street	Segment: South of Santa Ana Street	Vehicle Speed: 30 MPH		Vehicle Mix: 1		Roadway Classification: Collector													
Average Daily Traffic: 3650 Vehicles	NOISE PARAMETERS AT 45 FEET FROM CENTERLINE (Equiv. Lane Dist: 44.09 ft)					Centerline Distance to													
	Noise Adjustments			Unmitigated Noise Levels			Noise Contour (in feet)												
Vehicle Type	REML Traffic Adj.	Dist Adj.	Finite Adj.	Leq Peak	Leq Day	Leq Eve.	Leq Night	Ldn	CNEL										
Automobiles	62.51	-4.59	0.72	-1.20	57.44	54.92	53.67	49.80	57.35	57.82	70 dBA:	7	7						
Medium Trucks	73.11	-21.44	0.72	-1.20	51.19	31.53	29.43	28.63	35.51	35.79	65 dBA:	14	15						
Heavy Trucks	80.26	-24.45	0.72	-1.20	55.32	32.31	30.55	30.55	37.20	37.45	60 dBA:	30	33						
Total:											60.12	54.96	53.71	49.89	57.42	57.89	55 dBA:	65	70

Road Name: Broadway	Segment: West of Olive Street	Vehicle Speed: 35 MPH		Vehicle Mix: 2		Roadway Classification: Secondary Arterial													
Average Daily Traffic: 13200 Vehicles	NOISE PARAMETERS AT 50 FEET FROM CENTERLINE (Equiv. Lane Dist: 40.73 ft)					Centerline Distance to													
	Noise Adjustments			Unmitigated Noise Levels			Noise Contour (in feet)												
Vehicle Type	REML Traffic Adj.	Dist Adj.	Finite Adj.	Leq Peak	Leq Day	Leq Eve.	Leq Night	Ldn	CNEL										
Automobiles	65.11	0.10	1.23	-1.20	65.24	62.87	61.57	55.52	63.95	64.58	70 dBA:	23	25						
Medium Trucks	74.83	-14.77	1.23	-1.20	60.09	40.88	33.10	42.31	48.46	48.50	65 dBA:	50	54						
Heavy Trucks	80.05	-12.55	1.23	-1.20	67.53	50.54	42.76	51.96	58.12	58.15	60 dBA:	109	117						
Total:											70.01	63.14	61.64	57.25	65.06	65.56	55 dBA:	234	253

FHWA-RD-77-108 HIGHWAY TRAFFIC NOISE PREDICTION MODEL

Scenario: OPENING YEAR 2027 WITHOUT PROJECT CONDITIONS

Project: Anaheim The Mill
Site Conditions: Soft

Road Name: **Broadway** Segment: **East of Olive Street**
 Average Daily Traffic: 12000 Vehicles Vehicle Speed: 35 MPH Vehicle Mix: 2 Roadway Classification: Secondary Arterial

Vehicle Type	NOISE PARAMETERS AT 60 FEET FROM CENTERLINE (Equiv. Lane Dist: 52.53 ft)				Centerline Distance to Noise Contour (in feet)								
	RECEL Traffic Adj.	Dist Adj.	Finite Adj.	Leq Peak	Leq Day	Leq Eve.	Leq Night	Ldn	CNEL				
Automobiles	65.11	-0.32	-0.42	-1.20	63.17	60.80	59.50	53.45	61.88	62.51	70 dBA:	20	22
Medium Trucks	74.83	-15.18	-0.42	-1.20	58.02	38.81	31.03	40.24	46.39	46.43	65 dBA:	44	48
Heavy Trucks	80.05	-12.96	-0.42	-1.20	65.46	48.47	40.69	49.89	56.05	56.08	60 dBA:	95	102
Total:											55 dBA:	204	221

Total:

70 dBA: 20
65 dBA: 44
60 dBA: 95
55 dBA: 204

FHWA-RD-77-108 HIGHWAY TRAFFIC NOISE PREDICTION MODEL

Scenario: OPENING YEAR 2027 WITH PROJECT CONDITIONS

Project: Anaheim The Mill

Site Conditions: Soft

Vehicle Type	Vehicle Mix 1 (Local)			Vehicle Mix 2			Vehicle Mix 3 (I-5)			
	Day	Evening	Night	Day	Evening	Night	Day	Evening	Night	
Automobiles	67.10%	12.60%	15.50%	97.00%	69.50%	12.90%	9.60%	59.66%	8.14%	22.60%
Medium Trucks	1.30%	0.20%	0.50%	2.00%	1.44%	0.06%	1.50%	3.59%	0.60%	1.79%
Heavy Trucks	0.60%	0.10%	0.30%	1.00%	2.40%	0.10%	2.50%	1.85%	0.33%	1.45%
										3.62%

Road Name: Anaheim Boulevard

Segment: South of Santa Ana Street

Average Daily Traffic: 18874 Vehicles Vehicle Speed: 30 MPH Vehicle Mix: 2 Roadway Classification: Primary Arterial

NOISE PARAMETERS AT 70 FEET FROM CENTERLINE (Equiv. Lane Dist: 63.25 ft)											
Vehicle Type	Noise Adjustments			Unmitigated Noise Levels						Centerline Distance to Noise Contour (in feet)	
	REMEL Traffic Adj.	Dist Adj.	Finite Adj.	Leq Peak	Leq Day	Leq Eve.	Leq Night	Ldn	CNEL	Ldn	CNEL
Automobiles	62.51	2.32	-1.63	62.00	59.63	58.33	52.28	60.71	61.34	70 dBA:	22
Medium Trucks	73.11	-12.55	-1.63	57.73	38.52	30.74	39.95	46.11	46.14	65 dBA:	48
Heavy Trucks	80.26	-10.33	-1.63	67.10	50.11	42.33	51.54	57.69	57.72	60 dBA:	104
Total:				68.64	60.12	58.45	55.07	62.57	63.00	55 dBA:	224

Road Name: Claudina Street

Segment: North of Santa Ana Street

Average Daily Traffic: 1255 Vehicles Vehicle Speed: 25 MPH Vehicle Mix: 1 Roadway Classification: Local

NOISE PARAMETERS AT 40 FEET FROM CENTERLINE (Equiv. Lane Dist: 39.38 ft)											
Vehicle Type	Noise Adjustments			Unmitigated Noise Levels						Centerline Distance to Noise Contour (in feet)	
	REMEL Traffic Adj.	Dist Adj.	Finite Adj.	Leq Peak	Leq Day	Leq Eve.	Leq Night	Ldn	CNEL	Ldn	CNEL
Automobiles	59.44	-8.43	1.45	51.26	48.74	47.49	43.62	51.16	51.64	70 dBA:	2
Medium Trucks	71.09	-25.29	1.45	46.05	26.40	24.29	23.50	30.38	30.66	65 dBA:	5
Heavy Trucks	78.74	-28.30	1.45	50.69	27.68	25.92	25.92	32.57	32.82	60 dBA:	10
Total:				54.64	48.80	47.54	43.74	51.26	51.73	55 dBA:	23

Road Name: Philadelphia Street

Segment: North of Santa Ana Street

Average Daily Traffic: 674 Vehicles Vehicle Speed: 25 MPH Vehicle Mix: 1 Roadway Classification: Local

NOISE PARAMETERS AT 30 FEET FROM CENTERLINE (Equiv. Lane Dist: 29.17 ft)											
Vehicle Type	Noise Adjustments			Unmitigated Noise Levels						Centerline Distance to Noise Contour (in feet)	
	REMEL Traffic Adj.	Dist Adj.	Finite Adj.	Leq Peak	Leq Day	Leq Eve.	Leq Night	Ldn	CNEL	Ldn	CNEL
Automobiles	59.44	-11.13	3.41	50.51	47.99	46.75	42.87	50.42	50.89	70 dBA:	2
Medium Trucks	71.09	-27.99	3.41	45.30	25.65	23.54	22.75	29.63	29.91	65 dBA:	3
Heavy Trucks	78.74	-31.00	3.41	49.95	26.94	25.18	25.18	31.83	32.07	60 dBA:	7
Total:				53.90	48.05	46.80	42.99	50.51	50.98	55 dBA:	15

FHWA-RD-77-108 HIGHWAY TRAFFIC NOISE PREDICTION MODEL

Scenario: OPENING YEAR 2027 WITH PROJECT CONDITIONS

Project: Anaheim The Mill
Site Conditions: Soft

Road Name: Olive Street		Segment: North of Broadway		Roadway Classification: Collector															
Average Daily Traffic: 4324 Vehicles		Vehicle Speed: 30 MPH		Vehicle Mix: 1															
NOISE PARAMETERS AT 35 FEET FROM CENTERLINE (Equiv. Lane Dist: 33.82 ft)																			
Noise Adjustments			Unmitigated Noise Levels																
Vehicle Type	REML Traffic Adj.	Dist Adj.	Finite Adj.	Leq Peak	Leq Day	Leq Eve. Leq Night	Ldn	CNEL	Centerline Distance to Noise Contour (in feet)										
Automobiles	62.51	-3.85	2.44	-1.20	59.90	57.38	56.14	52.27	59.81	60.28	70 dBA:	7	8						
Medium Trucks	73.11	-20.71	2.44	-1.20	53.65	34.00	31.89	31.10	37.98	38.26	65 dBA:	16	17						
Heavy Trucks	80.26	-23.72	2.44	-1.20	57.79	34.78	33.01	33.01	39.67	39.91	60 dBA:	34	37						
Total:											62.58	57.42	56.17	52.35	59.88	60.35	55 dBA:	74	80

Road Name: Olive Street		Segment: North of Santa Ana Street		Roadway Classification: Collector															
Average Daily Traffic: 3555 Vehicles		Vehicle Speed: 30 MPH		Vehicle Mix: 1															
NOISE PARAMETERS AT 50 FEET FROM CENTERLINE (Equiv. Lane Dist: 49.18 ft)																			
Noise Adjustments			Unmitigated Noise Levels																
Vehicle Type	REML Traffic Adj.	Dist Adj.	Finite Adj.	Leq Peak	Leq Day	Leq Eve. Leq Night	Ldn	CNEL	Centerline Distance to Noise Contour (in feet)										
Automobiles	62.51	-4.70	0.00	-1.20	56.62	54.09	52.85	48.98	56.52	57.00	70 dBA:	6	7						
Medium Trucks	73.11	-21.56	0.00	-1.20	50.36	30.71	28.60	27.81	34.69	34.97	65 dBA:	14	15						
Heavy Trucks	80.26	-24.57	0.00	-1.20	54.50	31.49	29.73	29.73	36.38	36.62	60 dBA:	30	32						
Total:											59.29	54.13	52.89	49.06	56.59	57.06	55 dBA:	64	69

Road Name: Olive Street		Segment: South of Santa Ana Street		Roadway Classification: Collector															
Average Daily Traffic: 3724 Vehicles		Vehicle Speed: 30 MPH		Vehicle Mix: 1															
NOISE PARAMETERS AT 45 FEET FROM CENTERLINE (Equiv. Lane Dist: 44.09 ft)																			
Noise Adjustments			Unmitigated Noise Levels																
Vehicle Type	REML Traffic Adj.	Dist Adj.	Finite Adj.	Leq Peak	Leq Day	Leq Eve. Leq Night	Ldn	CNEL	Centerline Distance to Noise Contour (in feet)										
Automobiles	62.51	-4.50	0.72	-1.20	57.53	55.00	53.76	49.89	57.43	57.91	70 dBA:	7	7						
Medium Trucks	73.11	-21.36	0.72	-1.20	51.27	31.62	29.51	28.72	35.60	35.88	65 dBA:	14	15						
Heavy Trucks	80.26	-24.37	0.72	-1.20	55.41	32.40	30.64	30.64	37.29	37.54	60 dBA:	31	33						
Total:											60.20	55.05	53.80	49.97	57.50	57.98	55 dBA:	66	71

Road Name: Broadway		Segment: West of Olive Street		Roadway Classification: Secondary Arterial															
Average Daily Traffic: 13255 Vehicles		Vehicle Speed: 35 MPH		Vehicle Mix: 2															
NOISE PARAMETERS AT 50 FEET FROM CENTERLINE (Equiv. Lane Dist: 40.73 ft)																			
Noise Adjustments			Unmitigated Noise Levels																
Vehicle Type	REML Traffic Adj.	Dist Adj.	Finite Adj.	Leq Peak	Leq Day	Leq Eve. Leq Night	Ldn	CNEL	Centerline Distance to Noise Contour (in feet)										
Automobiles	65.11	0.12	1.23	-1.20	65.26	62.89	61.59	55.54	63.97	64.60	70 dBA:	23	25						
Medium Trucks	74.83	-14.75	1.23	-1.20	60.11	40.90	33.12	42.33	48.48	48.52	65 dBA:	51	55						
Heavy Trucks	80.05	-12.53	1.23	-1.20	67.55	50.56	42.77	51.98	58.14	58.17	60 dBA:	109	118						
Total:											70.03	63.16	61.66	57.27	65.07	65.58	55 dBA:	235	254

FHWA-RD-77-108 HIGHWAY TRAFFIC NOISE PREDICTION MODEL

Scenario: OPENING YEAR 2027 WITH PROJECT CONDITIONS

Project: Anaheim The Mill
Site Conditions: Soft

Road Name: **Broadway** Segment: **East of Olive Street**
 Average Daily Traffic: 12037 Vehicles Vehicle Speed: 35 MPH Vehicle Mix: 2 Roadway Classification: Secondary Arterial

Vehicle Type	NOISE PARAMETERS AT 60 FEET FROM CENTERLINE (Equiv. Lane Dist: 52.53 ft)				Centerline Distance to Noise Contour (in feet)												
	REME L Traffic Adj.	Dist Adj.	Finite Adj.	Leq Peak	Leq Day	Leq Eve.	Leq Night	Ldn	CNEL								
Automobiles	65.11	-0.30	-0.42	-1.20	63.18	60.81	59.52	53.46	61.89	62.53	70 dBA: 20	22					
Medium Trucks	74.83	-15.17	-0.42	-1.20	58.03	38.83	31.04	40.25	46.41	46.44	65 dBA: 44	48					
Heavy Trucks	80.05	-12.95	-0.42	-1.20	65.47	48.48	40.70	49.91	56.06	56.10	60 dBA: 95	103					
Total:										67.95	61.08	59.58	55.19	63.00	63.50	205	221

Total: