

**AGENDA**  
**PARKS AND RECREATION COMMISSION**  
**BROOKHURST COMMUNITY CENTER**  
**2271 W. CRESCENT AVE, ANAHEIM, CA 92801**  
**April 24, 2024 – 6:00 p.m.**

**COMMISSIONERS**

Ryan Balius, Chair  
Tony Flores, Vice Chair  
CarlottaRhea Clark  
James Cook  
Lynn Cudd  
Greg Martin  
Fred Sigala, Jr.

**STAFF**

Sjany Larson-Cash, Director  
Anaheim Sporn, Community Services Manager  
JJ Jimenez, Parks Manager  
Ana Straabe, Principal Project Planner  
Kamila Rodriguez, Senior Secretary

**EX-OFFICIO MEMBERS**

Katherine Smith, Anaheim Union High School District  
Luis Flores, Centralia School District  
Andrea Yamasaki, Orange Unified School District  
Paul Juarez, Placentia Yorba Linda Unified School District  
Christina Karanick, Savanna Elementary School District  
Mark A. Lopez, Anaheim Elementary School District  
Patricia Soave, Magnolia School District

**PUBLIC PARTICIPATION / SPECIAL NOTE TO OUR GUESTS AND VISITORS**

If you desire to address the Commission, you will have 3 minutes when called upon under Agenda Item #3, Unscheduled Public Communication. In addition, members of the public can submit comments electronically for the Parks and Recreation Commission consideration by sending them to [krdriguez1@anaheim.net](mailto:krdriguez1@anaheim.net). **To ensure distribution to the Parks and Recreation Commission prior to consideration of the agenda, please submit comments prior to 12:00 p.m., the day of the meeting.** Those comments, as well as any comments received after 12:00 p.m., will be distributed to the Parks and Recreation Commissioners and will be made part of the official public record of the meeting. Contact [Kamila Rodriguez](mailto:Kamila.Rodriguez@anaheim.net) at [krdriguez1@anaheim.net](mailto:krdriguez1@anaheim.net) with any questions.

1. CALL TO ORDER
2. PLEDGE OF ALLEGIANCE
3. UNSCHEDULED PUBLIC COMMUNICATION
4. SCHEDULED COMMUNICATION
5. APPROVAL OF THE MINUTES:
  - a) March 27, 2024
6. REPORTS
  - a) Park Ranger Report – March
  - b) Recreation, Neighborhood & Human Services Activity Report – February/March
  - c) Parks Capital Project Progress Report
7. NEW BUSINESS
  - a) Parks, Recreation, Neighborhood & Human Services Fees For FY 2024/2025
8. INFORMATIONAL ITEMS
  - a) Play Area Updates
9. ADJOURNMENT – The next meeting will be held on **May 22, 2024 at 6:00 p.m. – Downtown Anaheim Community Center**

All agenda items and backup materials are available for review at the Community Services Department and [www.anaheim.net](http://www.anaheim.net). Any writings or documents provided to a majority of the Parks and Recreation Commission regarding any items on this agenda (other than writings legally exempt from public disclosure) will be made available for public inspection in the Community Services Offices, 200 S. Anaheim Blvd., 4<sup>th</sup> Floor, Anaheim, CA 92805, during regular business hours.

If requested, the agenda and backup materials will be made available in appropriate alternative formats to persons with a disability, as required by Sec. 202 of the Americans with Disabilities Act of 1990 (42 U.S.C. Sec. 12132) and the federal rules and regulations adopted in implementation thereof.

Any person who requires a disability-related modification or accommodation, including auxiliary aids or services, in order to observe and/or offer public comment may request such reasonable modification, accommodation, aid, or service by contacting the Community Services Department at 200 S. Anaheim Blvd., 4<sup>th</sup> Floor, Anaheim CA or by telephone at (714) 765-5155, no later than 10:00 AM on the day preceding the scheduled meeting.

***Commission Members: Please notify Kamila Rodriguez with your attendance status no later than Tuesday, April 23 at 12:00 p.m. at [krdriguez1@anaheim.net](mailto:krdriguez1@anaheim.net) or (714) 765-5155.***

## MINUTES

**PARKS AND RECREATION COMMISSION  
DOWNTOWN ANAHEIM COMMUNITY CENTER  
250 E. CENTER ST. ANAHEIM, CA 92805  
March 27, 2024**

### COMMISSIONERS PRESENT:

Ryan Balius, Chair  
Tony Flores, Vice Chair  
James Cook  
Lynn Cudd  
Greg Martin  
Fred Sigala, Jr.

### STAFF PRESENT:

Sjany Larson-Cash, Director  
Anaheim Sporn, Community Services Manager  
JJ Jimenez, Parks Manager  
Ana Straabe, Principal Project Planner  
Marissa Granados, Community Services Coordinator  
Kamila Rodriguez, Senior Secretary

### COMMISSIONERS ABSENT:

CarlottaRhea Clark

## AGENDA

## ACTION TAKEN

---

1. **CALL TO ORDER:** Chair Balius called the meeting to order at 6:04 p.m.
2. **PLEDGE OF ALLEGIANCE:** Commissioner Sigala led the Pledge of Allegiance.
3. **UNSCHEDULED PUBLIC COMMUNICATION:** None.
4. **SCHEDULED COMMUNICATION:** None.
5. **APPROVAL OF THE MINUTES:** Chair Balius presented the February 28, 2024 minutes to the Commissioners for changes or corrections. Commissioner Cudd made a motion to accept the minutes, seconded by Commissioner Sigala. The motion was approved with 5 votes in favor; Chair Balius accepted the minutes.
6. **REPORTS**
  - a) **Park Ranger Report – February:** Anaheim Sporn presented the report and noted that the previous month's numbers remain on the report for comparison. Anaheim stated that the new Park Ranger staff have adjusted well to the online reporting system. Anaheim noted that the process of hiring more Rangers is still ongoing to prepare for the busier summer months. Chair Balius suggested that future reports include the data from the same month of the previous year in order to observe differences.  
  
Questions were answered regarding full-time Park Ranger positions.
  - b) **Parks Division Activity Report – January/February:** JJ Jimenez presented the report and highlighted the restoration of baseball facilities throughout all sectors. JJ commented on the anticipated increase in labor and maintenance required with increasing levels of rain due to higher rates of plant growth and erosion. Chair Balius shared that he has received positive feedback about the restoration of Maxwell Park.
  - c) **Parks Capital Project Progress Report:** Ana Straabe presented the report and highlighted the upcoming KABOOM! project at Little People's Park and the recent community design day. Ana provided an update on the progress with Little Pine Park, the improvements at Rio Vista Park and the construction at Center Greens.

(Vice Chair Tony Flores entered the meeting)

Questions were answered regarding the process of naming new park spaces, repairs around the outside of the Downtown Anaheim Youth Center, parking for the Downtown Anaheim Community Center, and manufacturer options for the Brookhurst Splash Pad project.

7. **INFORMATIONAL ITEMS:**

Chair Balius requested to postpone the Play Area Update presentation to the following meeting so that all Commissioners may be present.

Anaheim Sporn provided a flyer about the Anaheim Community Foundation Needs Assessment and encouraged commissioners to complete the survey and distribute it to the community. Anaheim noted that the survey will be open until the end of April and that the final report is expected to be completed by October. Commissioner Sigala requested to agendaize the survey results for the October meeting.

Questions were answered regarding the distribution of the survey and the availability of translated versions.

JJ Jimenez commented on the upcoming community beautification event at Modjeska Park on April 6<sup>th</sup>.

Commissioner Sigala requested updates on summer swimming activities. Anaheim Sporn provided updates and stated that more information would be shared in the coming months. Sjanya Larson-Cash invited the commissioners to meet with the Department individually for further program details.

8. **ADJOURNMENT:** Chair Balius adjourned the meeting at 6:52 p.m.

City of Anaheim-Park Ranger Patrol Statistics Time Period: March 2024

<i>Area</i>	<i>Patrols</i>	<i>Patrons</i>	<i>Public Contacts</i>	<i>Public Assists</i>	<i>Curfew</i>	<i>Alcohol</i>	<i>Possible Substance Abuse</i>	<i>Parking Notice</i>	<i>Vehicle</i>	<i>Dog Off Leash</i>	<i>Vendors</i>	<i>Syringe</i>	<i>Skate Boarding</i>	<i>Coyote</i>	<i>Other</i>
Aloe Greens Park	53	307	236	0	0	0	0	0	0	3	0	0	0	0	0
Anaheim Coves	216	1,321	979	6	19	0	0	0	1	1	0	0	0	0	0
Anaheim Hills Elementary	43	72	6	0	0	0	0	0	0	0	0	0	0	0	0
Anaheim Wetlands	2	0	0	0	0	0	0	0	0	0	0	0	0	0	0
Barton Park	95	651	394	0	0	0	0	0	0	0	0	0	0	0	0
Betsy Ross Park	75	587	385	0	0	0	0	0	0	0	0	0	0	0	0
Boysen Park	123	2,269	1,589	1	11	4	0	0	1	0	3	0	0	0	0
Brookhurst Park	110	2,271	1,305	0	4	2	4	0	0	3	0	0	0	0	0
Canyon Rim Park	58	113	72	0	0	0	0	0	0	0	0	0	0	0	0
Chaparral Park	145	2,149	1,470	4	89	0	0	0	0	1	7	0	0	0	0
Circle Park	14	36	7	0	0	0	0	0	0	0	0	0	0	0	0
Citrus/A.A.C.	51	315	238	0	4	2	0	0	0	0	0	0	0	0	0
Colony Park	30	170	112	0	0	0	0	0	0	0	0	0	0	0	0
Colony Square Park	24	6	5	0	1	0	0	0	0	0	0	0	0	0	0
Coral Tree Park	12	10	9	0	0	0	0	0	0	0	0	0	0	0	0
Cottonwood Park	19	18	14	0	0	0	0	0	0	0	0	0	0	0	0
Deer Canyon Nature Preserve	52	61	35	0	0	0	0	0	0	1	0	0	0	0	0
Downtown Community Center	52	222	108	0	0	6	0	0	0	1	0	0	18	0	0
Edison Park	94	1,227	622	0	0	0	0	1	0	2	2	0	0	0	0
Edison Trail	1	0	0	0	0	0	0	0	0	0	0	0	0	0	0
Energy Field	64	83	79	0	7	0	0	0	0	0	0	0	2	0	0
Eucalyptus Park	66	473	354	0	0	0	0	0	0	4	0	0	0	0	0
Founders Park	61	111	82	2	2	1	0	0	0	0	0	0	0	0	0
George Washington Park	38	269	133	0	0	0	3	0	0	0	0	0	0	0	0
Hansen Park	49	29	18	0	0	0	0	0	0	1	0	0	0	0	0
Imperial Park	27	172	156	0	0	0	0	0	0	2	0	0	0	0	0
Jacaranda Park	27	124	69	0	0	0	0	0	0	0	0	0	0	0	0
John Marshall Park	105	1,506	818	1	3	0	0	1	0	3	0	0	0	0	0
Juarez Park	97	755	507	0	2	0	0	0	0	3	0	0	0	0	0
Julianna Park	26	28	21	0	0	0	0	0	0	0	0	0	0	0	0
La Palma Park	113	1,941	1,210	1	47	2	8	1	0	1	0	0	0	0	0
Lincoln Park	34	224	118	0	21	0	0	0	0	0	0	0	0	0	0
Little Peoples Park	40	145	102	3	2	0	0	0	0	0	0	0	0	0	0
Magnolia Park	18	33	24	0	0	0	0	0	0	0	0	0	0	0	0
Manzanita Park (Skate Park)	108	1,081	814	2	15	3	0	0	0	1	2	0	555	0	0



City of Anaheim-Park Ranger Patrol Statistics Time Period: March 2024

Area	Patrols	Patrons	Public Contacts	Public Assists	Curfew	Alcohol	Possible Substance Abuse	Parking Notice	Vehicle	Dog Off Leash	Vendors	Syringe	Skate Boarding	Coyote	Other
Maxwell Park	123	2,479	1,486	0	28	0	0	0	0	10	2	0	0	0	0
Miraloma Family Resource Center	49	185	118	0	0	0	0	0	0	0	0	0	0	0	0
Modjeska Park	116	2,894	1,863	0	11	0	0	0	1	4	3	0	0	0	0
Oak Canyon Nature Center	45	52	45	0	0	0	0	0	0	0	0	0	0	0	0
Oak Park	5	0	0	0	0	0	0	0	0	0	0	0	0	0	0
Olive Hills Park	62	213	89	0	8	0	0	0	0	0	0	0	0	0	0
Palm Lane Park (Skate Park)	27	109	45	0	0	0	0	0	0	0	0	0	29	0	0
Paul Revere Park	13	63	60	0	0	0	0	0	0	0	0	0	0	0	0
Pearson Park	208	5,843	3,904	0	27	4	2	0	0	7	8	0	0	0	0
Pelanconi Park	23	27	25	0	0	0	0	0	0	0	0	0	0	0	0
Peralta Canyon Park	92	1,816	1,473	0	8	0	0	0	0	0	1	0	0	0	0
Peter Marshall Park	35	360	188	0	0	0	0	0	0	1	0	0	0	0	0
Pioneer Park	112	1,867	1,300	1	1	2	0	0	0	2	0	0	0	0	0
Ponderosa Park (Skate Park)	84	1,014	569	8	0	0	1	0	0	0	1	0	0	0	0
Rio Vista Park	91	754	716	0	6	0	0	0	0	0	1	0	0	0	0
Riverdale Park	73	552	486	0	5	7	0	0	0	2	1	0	0	0	0
Ronald Reagan Park	71	1,267	1,027	0	0	0	0	0	0	0	0	0	0	0	0
Sage Park	91	881	508	1	10	2	0	0	0	0	0	0	0	0	0
Schweitzer Park (Skate Park)	112	767	369	1	2	0	0	0	0	0	2	0	0	0	0
Stoddard Park	71	926	576	0	1	0	0	0	0	1	0	0	0	0	0
Sycamore Park	63	300	223	0	0	0	0	0	0	0	0	0	0	0	0
Twila Reid Park	119	4,155	2,202	0	170	0	0	40	0	5	0	0	10	0	0
Walnut Grove Park	97	779	403	8	3	10	0	0	2	0	0	0	0	0	0
West Anaheim Skate Park	27	214	14	0	0	0	0	0	0	0	0	0	26	0	0
West Anaheim Youth Center	68	91	33	0	0	0	0	0	0	0	0	0	0	0	0
Willow Park	57	40	21	0	0	0	0	0	0	0	0	0	0	0	0
Yorba Regional Park	56	60	12	0	0	0	0	0	0	0	0	0	0	0	0
<b>Total March 2024</b>	<b>4,132</b>	<b>46,487</b>	<b>29,846</b>	<b>39</b>	<b>507</b>	<b>45</b>	<b>18</b>	<b>43</b>	<b>5</b>	<b>59</b>	<b>33</b>	<b>0</b>	<b>640</b>	<b>0</b>	<b>0</b>
<b>Total February 2024</b>	<b>4,037</b>	<b>34,985</b>	<b>21,912</b>	<b>51</b>	<b>228</b>	<b>39</b>	<b>47</b>	<b>5</b>	<b>2</b>	<b>57</b>	<b>45</b>	<b>0</b>	<b>1,161</b>	<b>0</b>	<b>0</b>
<b>Difference 2024</b>	<b>95</b>	<b>11,502</b>	<b>7,934</b>	<b>-12</b>	<b>279</b>	<b>6</b>	<b>-29</b>	<b>38</b>	<b>3</b>	<b>2</b>	<b>-12</b>	<b>0</b>	<b>-521</b>	<b>0</b>	<b>0</b>
<b>Total March 2023</b>	<b>3,145</b>	<b>35,118</b>	<b>26,748</b>	<b>107</b>	<b>166</b>	<b>107</b>	<b>38</b>	<b>9</b>	<b>10</b>	<b>23</b>	<b>35</b>	<b>0</b>	<b>1,279</b>	<b>0</b>	<b>0</b>
<b>Difference March 2024 - 2023</b>	<b>987</b>	<b>11,369</b>	<b>3,098</b>	<b>-68</b>	<b>341</b>	<b>-62</b>	<b>-20</b>	<b>34</b>	<b>-5</b>	<b>36</b>	<b>-2</b>	<b>0</b>	<b>-639</b>	<b>0</b>	<b>0</b>

# RECREATION AND HUMAN & NEIGHBORHOOD SERVICES DIVISIONS ACTIVITY REPORT FEBRUARY 2024 – MARCH 2024

## RECREATION SERVICES

### Community Support

This year's Volunteer Recognition Event was held at the City National Grove of Anaheim on Wednesday, March 27<sup>th</sup>. The theme of "Honoring Anaheim Volunteers" was used to recognize our community members, organizations, and businesses for giving their time and resources to support Anaheim Community Services programs in 2023. Disneyland Resort, Republic Services, and the Samueli Foundation were generous Presenting Sponsors and over 300 attendees enjoyed a beautiful luncheon with the Anaheim Ballet providing entertainment. This year we were joined by Jessica De Nova from ABC7 Eyewitness News who served as the event's emcee.



### Center Art Gallery



Center Art Gallery, located at the Downtown Anaheim Community Center, showcased artist Angela Bermudez's *Dualities* exhibit, in February. The exhibit featured artwork influenced by music through movement, texture, & emotions. During her opening reception, Angela demonstrated her talent by completing a live painting alongside award-winning composer Austin Wintory. As she listened to the music, she painted from feeling and sound.

On March 18<sup>th</sup>, the Anaheim Union High School District's (AUHSD) *Color and Light Show* art exhibition featured the award-winning artwork of students from various schools across the District. The student work on display was selected as exemplary by a panel of judges and was recognized at the 23<sup>rd</sup> annual AUHSD *Color and Light Show* award program held later that same evening at the Downtown Anaheim Community Center.



## Youth Programs

The S.T.A.R.S. and Fun on Wheels youth program sites celebrated spring with fun crafts and egg hunts at each site. Participants enjoyed decorating bags as well as hunting for candy and toy-filled plastic eggs.

S.T.A.R.S. and Fun on Wheels programs also partnered with the First Tee of Orange County on a new programming opportunity. Program participants from Stoddard Park, Glen/Neighbors, and Brookhurst Community Center sites attended a free, six-week program, that taught participants the fundamentals of golf and core values such as teamwork and conflict resolution. City staff transported 11 participants to Dad Miller Golf Course each week. They enjoyed this opportunity, and we hope to have other sites attend in the fall.



---

## HUMAN & NEIGHBORHOOD SERVICES

---

### Youth in Government Day

Since 1956, the City of Anaheim's Community Services Department has strived to give high school students a unique opportunity to learn about their local city government. The Youth in Government Day (YIGD) program was created to provide this opportunity and has proven to be a memorable and invaluable experience for youth participants. This year's YIGD event took place on February 28<sup>th</sup> with the theme of "Careers in Local Government". Students were provided with an opportunity to see how the different Departments within the City of Anaheim increase the quality of life for residents and were educated on the different career paths within local government. Over 100 students participated in YIGD 2024.





## Anaheim Youth Advisory Council



The Anaheim Youth Advisory Council (AYAC) hosted their first meeting on March 20<sup>th</sup>. The AYAC is an advisory body that provides support and advisement to city staff on youth programs, projects, events, activities, initiatives, priorities, and interests. The AYAC is comprised of 18 Anaheim youth between the ages of 14-17 years of age (or 18 if enrolled in high school or home school), representing each City Council district in Anaheim.

This year's first meeting was filled with excitement and ideas. The first project they are taking on is assisting with the Anaheim Community Foundation's Needs Assessment Survey. The AYAC members will be visiting neighborhoods in their districts in order to promote the survey and will later provide feedback as a focus group for the Foundation's assessment report.



**COMMUNITY SERVICES CAPITAL PROJECTS PROGRESS REPORT - As of April 17, 2024**

	<b>PROJECT</b>	<b>SCOPE</b>	<b>FUNDING ACTIVITY</b>	<b>RECENT ACCOMPLISHMENTS</b>	<b>NEXT STEPS</b>
1	<b>Barton Playground Surfacing</b> 800 Agate Street  PM: Ana	Replacement of a 5,750 square foot heavily-used rubberized surfacing area at Barton Park.	<u>Grants:</u> CDBG \$175,000  <u>Consultants:</u> n/a  <u>Contractor:</u> TBD	<ul style="list-style-type: none"> <li>Advertised the Request for Bids to prospective contractors (Public Works staff is taking the lead and advertised the work with other CDBG-funded project sites)</li> </ul>	<ul style="list-style-type: none"> <li>Obtain the Bids from contractors and evaluate responsiveness and cost</li> <li>Obtain approval for contract award and issue a Notice to Proceed to the selected contractor to start the work</li> </ul>



2	<b>Boysen Park Refresh</b> 951 S. State College Blvd.  PM: Ana	Refresh 19.5-acres of existing park space and extend park into 2.5-acre adjacent City-owned land.	<u>Grants:</u> State Earmark \$15 million  <u>Consultants:</u> David Volz Design (DVD) \$44,744	<ul style="list-style-type: none"> <li>Staff coordinated a community meeting for the skate park design (phase 1 of Boysen Refresh) by working with the school, reserving the meeting space, creating and sending invitations to residents, etc.</li> <li>Communicated with a design consulting firm to aid with the first steps of the design phase</li> </ul>	<ul style="list-style-type: none"> <li>Hold a community meeting to obtain design feedback on the skate park element</li> <li>Begin design work and present options to the community</li> </ul>
---	---	---	--	--	--



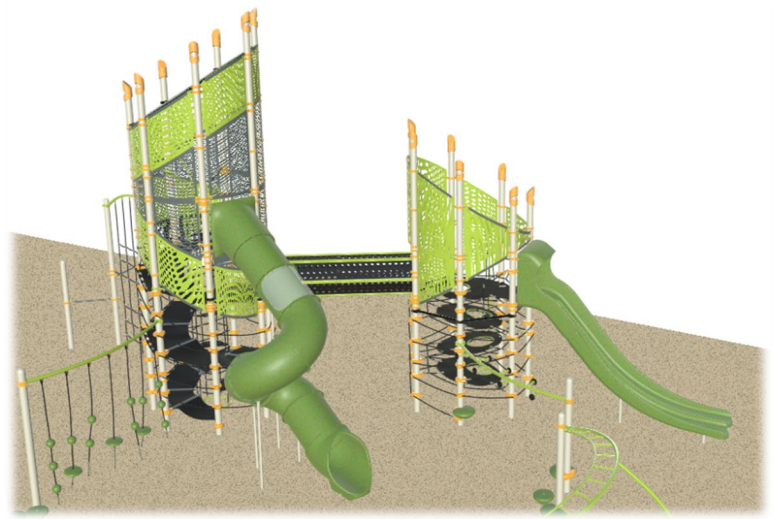


**COMMUNITY SERVICES CAPITAL PROJECTS PROGRESS REPORT - As of April 17, 2024**

	<b>PROJECT</b>	<b>SCOPE</b>	<b>FUNDING ACTIVITY</b>	<b>RECENT ACCOMPLISHMENTS</b>	<b>NEXT STEPS</b>
3	<b>Brookhurst Splash Pad</b> 2271 W Crescent Ave.  PM: Lucy	Install a splash pad at Brookhurst Park.	<u>Grants:</u> CDBG \$800,000  <u>Consultant:</u> n/a	<ul style="list-style-type: none"> <li>• Developed preliminary project budget estimates for design, equipment, and construction of the new splash pad</li> <li>• Prepared preliminary schedule detailing key milestones and timelines</li> <li>• Researched existing as-built plans and conducted site investigations to assess current conditions at the park</li> </ul>	<ul style="list-style-type: none"> <li>• Identify and evaluate 1-2 locations best suited for the new splash pad based on criteria like space, accessibility, utilities, etc.</li> <li>• Develop a Request for Proposal (RFP) to hire a qualified consultant team for the project's design and construction phases</li> </ul>



4	<b>Canyon Rim Playground Replacement and Park Refresh</b> 7305 E Canyon Rim  PM: Ana	Replace existing 30+ year old play equipment and other park amenities, as needed.	<u>Grants:</u> n/a  <u>Consultants:</u> RHA \$3,500	<ul style="list-style-type: none"> <li>• Reviewed the <i>draft</i> playground design and provided feedback to the manufacturer's representative</li> <li>• Met with the manufacturer's representative to discuss options and finalize the color palette of the new playground</li> </ul>	<ul style="list-style-type: none"> <li>• Obtain the final design from the manufacturer's representative</li> <li>• Begin developing construction documents</li> </ul>
---	---	---	---	--	---





**COMMUNITY SERVICES CAPITAL PROJECTS PROGRESS REPORT - As of April 17, 2024**

	<b>PROJECT</b>	<b>SCOPE</b>	<b>FUNDING ACTIVITY</b>	<b>RECENT ACCOMPLISHMENTS</b>	<b>NEXT STEPS</b>
5	<b>Center Greens</b> 305 E Broadway  PM: Naomi	Develop a 3.5-acre open space east of City Hall to include a skate park, play areas, fitness loop, shaded plaza, new landscaping, and basketball court.	<u>Grants:</u> • RMC \$300,000 • LWCF \$960,000  <u>Consultants:</u> • Schmidt Design Group \$321,910 • LSA \$19,500  <u>Contractor:</u> Solex Construction Inc. \$5,885,645.30	<ul style="list-style-type: none"> <li>Continued installation of irrigation including within the large turf area</li> <li>Completed concrete paving for the entire project site</li> <li>Began installing decorative fencing around the Skate Park</li> <li>Shade structure and shaded bench swing are 90% complete</li> <li>Dug holes for trees and visited nurseries to identify and reserve specific trees</li> <li>Installed site furnishings</li> <li>Electrical Meter pedestal was approved</li> </ul>	<ul style="list-style-type: none"> <li>Finish installation of perimeter fencing</li> <li>Complete resilient surfacing installation for challenge course</li> <li>Finish the electrical work</li> <li>Continue irrigation installation.</li> <li>Irrigation coverage test</li> </ul>



6	<b>La Palma Park Improvements</b> 1151 N La Palma Parkway  PM: Jodi	Improve approx. 10.5-acres of the west side of La Palma Park with three (3) soccer fields, new lighting, playground, exercise equipment, open air arena, restroom building, landscaping and irrigation, and other supporting park amenities	<u>Grants:</u> • Federal Earmark \$2,000,000 • Outdoor Recreation Legacy Partnership-ORLP \$6,000,000 <i>(application in progress)</i>  <u>Consultants:</u> Placeworks \$63,290	<ul style="list-style-type: none"> <li>Finalized the NEPA document</li> <li>Submitted the full ORLP grant application to the State for consideration and worked with the local administrator to update the budget and narrative</li> </ul>	<ul style="list-style-type: none"> <li>Await the ORLP grant award announcements – scheduled to be announced in fall 2024</li> </ul>
---	--	---	---	--	---





COMMUNITY SERVICES CAPITAL PROJECTS PROGRESS REPORT - As of April 17, 2024

	PROJECT	SCOPE	FUNDING ACTIVITY	RECENT ACCOMPLISHMENTS	NEXT STEPS
7	<b>Little People's Park KABOOM!</b> 220 W Elm St.  PM: Ana	Replace an approx. 17 year old play space with KABOOM!, YMCA, community, staff, and CarMax.	<b>Funding Partner:</b> CarMax \$69,000	<ul style="list-style-type: none"> <li>Received and reviewed the final design and ordered the play equipment</li> <li>Conducted ongoing planning activities (including weekly calls) with KABOOM!, Carmax and YMCA</li> <li>Began developing the side project ideas list</li> <li>Developed and sent invitations for the playground build</li> </ul>	<ul style="list-style-type: none"> <li>Continue to participate in weekly planning meetings with KABOOM! and partners</li> <li>Host the playground prep day(s) and build day on Tues. 5/14 – Thurs. 5/16</li> <li>Obtain a final playground inspection and open to the public</li> </ul>



**BUILD A PLAYGROUND WITH US!**  
 ¡CONSTRUYE UN PARQUE INFANTIL CON NOSOTROS!

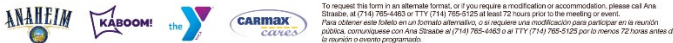
**LITTLE PEOPLE'S PARK**  
 220 W. Elm Street

**JOIN US!**  
 ¡UNETE!

**PREP DAYS: May 14-15, 9 a.m.-4 p.m.**  
 DÍAS DE PREPARACIÓN: MAYO 14 Y 15, DE 9 A.M. A 4 P.M.

**BUILD DAY: May 16, 8 a.m.-3 p.m.**  
 DÍA DE CONSTRUCCIÓN: MAYO 16, DE 8 A.M. A 3 P.M.

\*This organization and its activities are not related to or sponsored by the Anaheim Elementary School District. \*Esta organización y sus actividades no están relacionadas ni patrocinadas por el Distrito Escolar Elemental de Anaheim (AESD).



**REGISTER HERE!**  
 REGÍSTRASE AQUÍ

**BREAKFAST AND LUNCH PROVIDED**  
 HABRÁ DESAYUNO Y ALMUERZO

**FUN KID'S ACTIVITIES**  
 ACTIVIDADES DIVERTIDAS PARA NIÑOS

**BUILD DAY IS RAIN OR SHINE**  
 EL DÍA DE CONSTRUCCIÓN SE LLEVARÁ A CABO ANUNDE LLUEVA O HAYA SOL.

**PARKING**  
 ESTACIONAMIENTO

**RSVP AT EVENTBRITE:**  
 CONFIRMA SU ASISTENCIA EN  
**TINY.CC/LITTLEPEOPLES**  
 OR EMAIL  
 O COMUNÍQUESE CON  
**CHIBUZO OKORO**  
**OKORO@KABOOM.ORG**

\*Limited parking available. Carpooling encouraged.  
 \*Estacionamiento limitado. Se recomienda compartir autos.

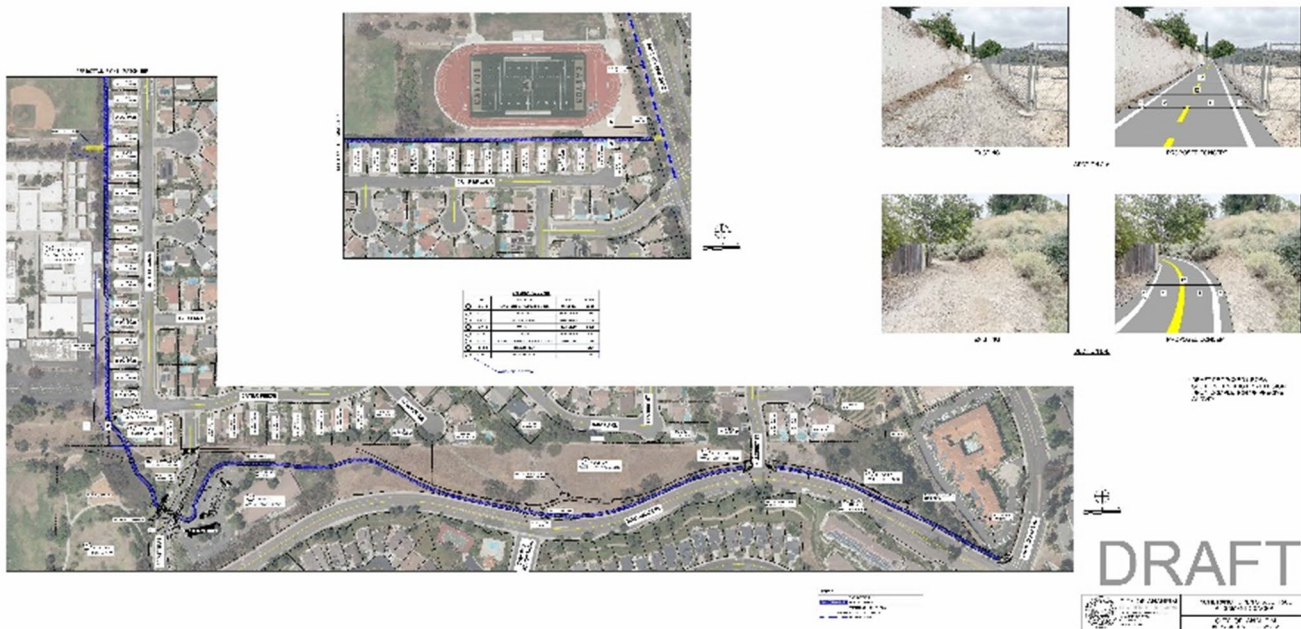


**COMMUNITY SERVICES CAPITAL PROJECTS PROGRESS REPORT - As of April 17, 2024**

	<b>PROJECT</b>	<b>SCOPE</b>	<b>FUNDING ACTIVITY</b>	<b>RECENT ACCOMPLISHMENTS</b>	<b>NEXT STEPS</b>
8	<b>Little Pine Park</b> 884 W Bellevue Dr.  PM: Naomi	Develop a 0.4-acre pocket park on Bellevue Drive.	<u>Grants:</u> State Parks Prop. 68 \$750,000  <u>Consultant:</u> BGB Design Group \$60,620	<ul style="list-style-type: none"> <li>A non-mandatory pre-bid site walk occurred on Thursday, 4/11. Representatives from eight (8) construction firms attended. The Q&amp;A deadline is Friday, 4/19 and bids are due on Thursday, 5/2</li> </ul>	<ul style="list-style-type: none"> <li>Conduct the Bid opening on Thursday 5/2/24</li> <li>Evaluate bids, identify the lowest, most responsive bidder and take the contract award to Council for approval on Tuesday, 5/21</li> </ul>



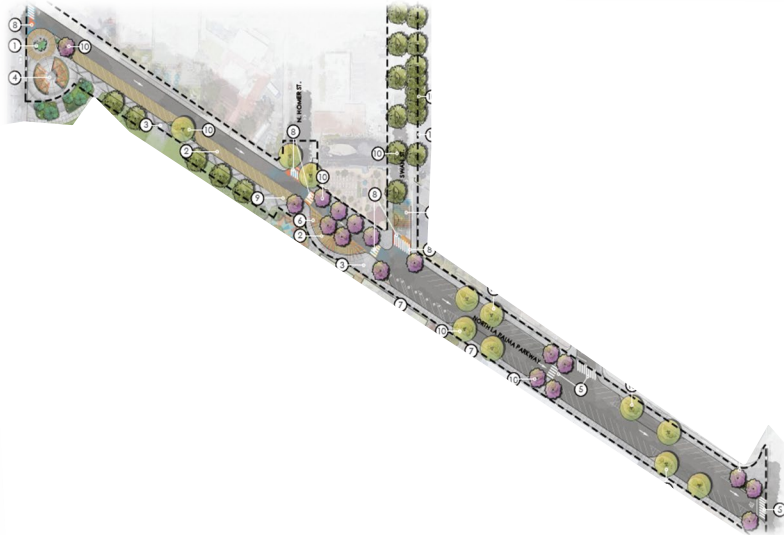
9	<b>Nohl Ranch Trail</b>  PM: Naomi	Development of new trail from Anaheim Hills Road to Imperial Highway.	<u>Grants:</u> Orange County Transportation Authority (OCTA) (requested)	<ul style="list-style-type: none"> <li>The project was recommended for OCTA's "Complete Streets" program funding (\$3,358,714)</li> </ul>	<ul style="list-style-type: none"> <li>Finalize easement dedication</li> </ul>
---	--	---	---	---	--





**COMMUNITY SERVICES CAPITAL PROJECTS PROGRESS REPORT - As of April 17, 2024**

	<b>PROJECT</b>	<b>SCOPE</b>	<b>FUNDING ACTIVITY</b>	<b>RECENT ACCOMPLISHMENTS</b>	<b>NEXT STEPS</b>
10	<b>North La Palma Green Promenade</b> 1151 N La Palma Parkway  PM: Jodi	Transform N. La Palma Parkway into an environmentally and pedestrian-friendly one-way promenade and improve the Swan Street Parking Lot with improved lighting, more parking spaces, and "green" elements.	<u>Grants:</u> Caltrans-Clean California Local Grant Program \$2,639,000 <u>Consultants:</u> • RRM \$370,349 • Harrington Geotech \$6,955	<ul style="list-style-type: none"> <li>• Worked with design consultant to obtain necessary information and update the plan for bidding</li> <li>• Obtained approval from the grantor, Caltrans, on the requested time extension and scope modification</li> <li>• Continued to assemble the bid package for bidding in May</li> </ul>	<ul style="list-style-type: none"> <li>• Advertise the Request for Bids to contractors for Fall 2024 construction start</li> </ul>



11	<b>Oak Canyon Nature Center Renovation</b> 6700 E Walnut Canyon Rd.  PM: Jodi	Expand/renovate the amphitheater, implement an outdoor laboratory space, install interactive exhibits, and install interpretive signage.	<u>Grants:</u> OEEF \$500,000 <u>Consultant:</u> • BGB Design Group \$103,550 • Harrington Geotech \$7,100 <u>Contractor:</u> Armstrong CalBuild \$1,118,000	<ul style="list-style-type: none"> <li>• Deck lighting was installed</li> <li>• Handrails were installed at pedestrian deck, stage ramp and sidewalk ramps</li> <li>• Installed five (5) Interpretive signs along the Stream Trail</li> <li>• Installed oak tree and frog interactive exhibit tables at the deck and bridge</li> </ul>	<ul style="list-style-type: none"> <li>• Sandblast OCNC logo into colored concrete</li> <li>• Complete installation of interactive exhibits</li> <li>• Complete parking lot improvements</li> </ul>
----	--	--	--	--	---

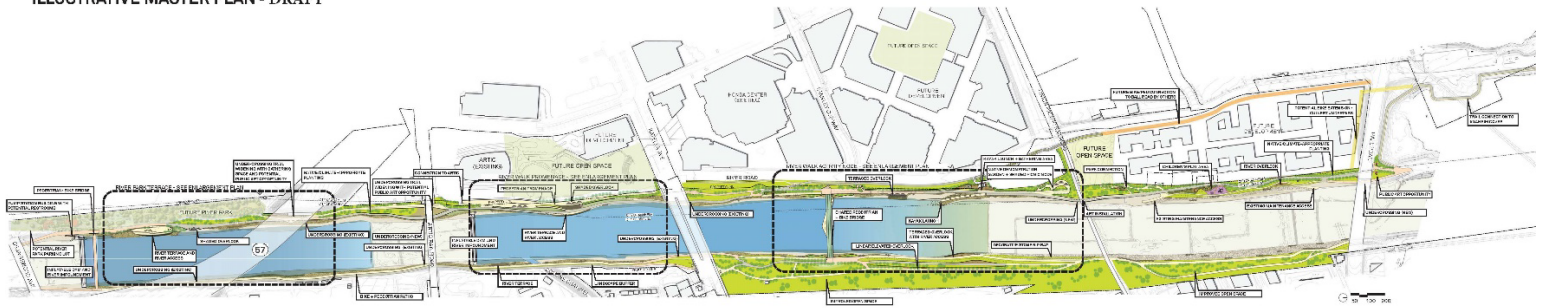




**COMMUNITY SERVICES CAPITAL PROJECTS PROGRESS REPORT - As of April 17, 2024**

	<b>PROJECT</b>	<b>SCOPE</b>	<b>FUNDING ACTIVITY</b>	<b>RECENT ACCOMPLISHMENTS</b>	<b>NEXT STEPS</b>
12	<p><b>OC River Walk</b> Connect Anaheim Coves to Orangewood Avenue, approximately 2-miles</p> <p>PM: JJ &amp; Ana</p>	<p>Transform 2-miles of the Santa Ana River Corridor between Orangewood and Anaheim Coves into an iconic destination for recreation and entertainment. While continuing to serve as flood control infrastructure, the project will recharge the aquifer, improve connectivity, recreation, aesthetics, and ecology of the river.</p> <p><a href="http://Ocriverwalk.com">Ocriverwalk.com</a></p>	<p><u>Grants:</u> State Coastal Conservancy (SCC) \$5 million Federal RAISE grant \$5 million <u>Consultant:</u> PACE \$7,930,627</p>	<ul style="list-style-type: none"> <li>• Held ongoing meetings with consultants, OC Water District (OCWD) and continued to coordinate the Cooperative Agreement</li> <li>• Continued to develop the draft Master Plan (below)</li> <li>• Coordinated with City of Orange on an Active Transportation (ATP) grant application for construction funding for the pedestrian bridge</li> </ul>	<ul style="list-style-type: none"> <li>• Continue to work with the City of Orange on the ATP grant application</li> <li>• Continue to work with consultants and partner agencies</li> <li>• Finalize Master Plan</li> <li>• Finalize Cooperative Agreement with OC Water District</li> </ul>

ILLUSTRATIVE MASTER PLAN - DRAFT



13	<p><b>Paul Revere Improvements</b> 160 Guinita Ln.</p> <p>PM: Naomi</p>	<p>Replace the existing underutilized sand volleyball court with new surfacing. Upgrade the existing playground to provide safe and inclusive play area for the local community and adjacent school kids.</p>	<p><u>Consultant:</u> NUVIS \$14,900</p>	<ul style="list-style-type: none"> <li>• Obtained peer review approval on the Construction Documents and obtained necessary signatures</li> <li>• Advertised the Request for Bids to master on-call contractors for construction</li> </ul>	<ul style="list-style-type: none"> <li>• Obtain the Bids from contractors and evaluate responsiveness and cost</li> <li>• Issue a Notice to Proceed to the selected contractor to start the work</li> </ul>
----	---	---	--	---	---





**COMMUNITY SERVICES CAPITAL PROJECTS PROGRESS REPORT - As of April 17, 2024**

	<b>PROJECT</b>	<b>SCOPE</b>	<b>FUNDING ACTIVITY</b>	<b>RECENT ACCOMPLISHMENTS</b>	<b>NEXT STEPS</b>
14	<b>Rio Vista Park Improvements</b> 201 N Park Vista St.  PM: Jodi	Demolish existing restroom / utility building and replace with new ADA compliant building along with a new stand-alone shade structure and upgraded adjacent hardscape.	<u>Grants:</u> CDBG \$650,000  <u>Consultants:</u> BBA \$143,098	<ul style="list-style-type: none"> <li>• A non-mandatory pre-bid meeting was held on-site with four (4) potential bidders in attendance</li> <li>• Bid opening on 4/11 resulted in only one (1) bid of \$2.1 million which was significantly over the engineer's cost estimate (\$1.6 million)</li> </ul>	<ul style="list-style-type: none"> <li>• Re-advertise the Request for Bids in August when the construction market slows down</li> </ul>



15	<b>Riverdale Park Playground Replacement and Park Refresh</b> 4545 Riverdale Ave.  PM: Ana	Replace existing 27 year old play equipment and other park amenities, as needed.	<u>Grants:</u> n/a  <u>Consultants:</u> RHA \$3,500	<ul style="list-style-type: none"> <li>• Obtained necessary signatures on the Construction Documents and advertised the Request for Bids to master on-call contractors for construction</li> </ul>	<ul style="list-style-type: none"> <li>• Obtain the Bids from contractors and evaluate responsiveness and cost</li> <li>• Issue a Notice to Proceed to the selected contractor to start the work</li> </ul>
----	---	--	---	--	---





**COMMUNITY SERVICES CAPITAL PROJECTS PROGRESS REPORT - As of April 17, 2024**

	<b>PROJECT</b>	<b>SCOPE</b>	<b>FUNDING ACTIVITY</b>	<b>RECENT ACCOMPLISHMENTS</b>	<b>NEXT STEPS</b>
16	<b>River Park</b> West side of the river between Orangewood and the 57 freeway  PM: Naomi	Acquire approximately 3-acre site from County of Orange and develop a park.	<u>Grants:</u> Land and Water Conservation Fund (LWCF) \$1.9 million Rivers and Mountains Conservancy (RMC) \$1.5 million <i>(requested)</i>  <u>Consultants:</u> LSA \$17,000	<ul style="list-style-type: none"> <li>Staff is working on finalizing the Request for Proposals from design consultants</li> </ul>	<ul style="list-style-type: none"> <li>Advertise Request for Proposals, review proposals, and issue a Notice to Proceed with the design work</li> </ul>



17	<b>Yorba Regional Park</b> 7600 E. La Palma Ave.  PM: JJ	City is in initial communications with County of Orange to purchase property on the west end of Yorba Regional Park. The land could be used to develop soccer fields and other recreational amenities.	n/a	<ul style="list-style-type: none"> <li>Communicated with County of Orange regarding acquisition</li> <li>Interest Letter is being reviewed for submittal</li> </ul>	<ul style="list-style-type: none"> <li>Continue to coordinate with the County to acquire the land</li> </ul>
----	---	--	-----	---	--



\*All projects are funded through park developer fees unless otherwise specified\*



# City of Anaheim

## COMMUNITY SERVICES DEPARTMENT

**DATE:** APRIL 24, 2024  
**TO:** PARKS AND RECREATION COMMISSION  
**FROM:** SJANY LARSON-CASH, DIRECTOR *S. Larson-Cash*  
**SUBJECT:** PARKS, RECREATION, NEIGHBORHOOD AND HUMAN SERVICES FEES FOR FY 2024/25

---

### RECOMMENDATION:

That the Parks and Recreation Commission, by Motion, recommend that the City Council establish fees to be charged for Parks, Recreation, Neighborhood and Human Services programs and services commencing on September 1, 2024.

### DISCUSSION:

The Community Services Department offers a variety of innovative facilities, programs and services to improve the quality of life in Anaheim. Many of these programs are offered free of charge, while a few are assessed a nominal fee. As a part of this year's budget preparation process, staff has evaluated current user fees for various programs and services. These include fees for park and facility rentals, youth enrichment activities and camps, recreation classes, special events, and other Community Services programs. These fees were last updated in FY 2023/24, and since then costs related to these programs and services have continued to increase. As such, a 3% increase rounded up to the next dollar is being proposed for all user fees to offset rising labor and program material costs. A summary of the existing fees and proposed increases are detailed in the attachment provided.

The Parks and Recreation Commission is responsible for reviewing these proposed fees and making recommendations concerning fee adjustments to the City Council. City Council approval of these fees would allow them to take effect beginning September 1, 2024. When reviewing the proposed fees, please note that the list of fees does not include the many free programs offered at local parks, playgrounds, community centers, family resource centers, and youth centers. These services continue to be supported by General Fund tax dollars and other revenue sources to benefit all Anaheim residents.

Staff is confident that care has been taken to adjust fees as necessary and is cognizant of the City Council's desire to keep our fee structure as reasonable and moderate as possible for residents.

### IMPACT ON THE BUDGET:

The proposed fees will be included as part of the revenues projected in the proposed FY 2024/25 budget for the Community Services Department.

Attachment



### Current Fees and Proposed Fee Adjustments

	Current Fee	3% Increase (rounded up to the next dollar)
<b><u>STANDARD FACILITY RENTAL FEES</u></b>		
Facility Rental Application Processing Fee	\$ 21 /application/facility	\$ 22 /application/facility
Facility Rental Transfer/Change Fee	\$ 11 /occurrence	\$ 12 /occurrence
Facility Rental Application Rush Fee (less than 10 working days prior to event)	\$ 26 /application/facility	\$ 27 /application/facility
Late Insurance Certificates	\$ 26 /rental	\$ 27 /rental
Late Payment Fee (per contract payment schedule)	\$ 26 /scheduled payment	\$ 27 /scheduled payment
Staffing (as required)	\$ 24 /hr./staff member	\$ 25 /hr./staff member
Security Services (as required)	\$ 26 /guard	\$ 27 /guard
Parking Lot Rental	\$ 8 /space	\$ 9 /space
<b><u>RECREATION FACILITIES</u></b>		
<b><u>BROOKHURST COMMUNITY CENTER (Rental Fees for events at Brookhurst Community Center)</u></b>		
<b><u>MULTIPURPOSE ROOM RENTAL - Non-Prime Time (Monday-Friday, Sunday)</u></b>		
<b><u>EAST</u></b>		
Non Resident Commercial	\$ 101 /hr.	\$ 105 /hr.
Resident Commercial	\$ 89 /hr.	\$ 92 /hr.
Non Resident	\$ 83 /hr.	\$ 86 /hr.
Non Resident/Non Profit	\$ 78 /hr.	\$ 81 /hr.
Resident	\$ 62 /hr.	\$ 64 /hr.
Resident/Non Profit* (*Resident/Non-Profit receives 2 hours of free use per month)	\$ 57 /hr.	\$ 59 /hr.
Security Deposit	\$ 515 /rental	\$ 531 /rental
Set up Fee	\$ 42 /rental	\$ 44 /rental
Before/After Hours Fee	\$ 52 /hr.	\$ 54 /hr.
Weekday Security Deposit (Alcohol)	\$ 773 /rental	\$ 797 /rental
<b><u>WEST</u></b>		
Non Resident Commercial	\$ 78 /hr.	\$ 81 /hr.
Resident Commercial	\$ 65 /hr.	\$ 67 /hr.
Non Resident	\$ 62 /hr.	\$ 64 /hr.
Non Resident/Non Profit	\$ 57 /hr.	\$ 59 /hr.
Resident	\$ 52 /hr.	\$ 54 /hr.
Resident/Non Profit* (*Resident/Non-Profit receives 2 hours of free use per month)	\$ 47 /hr.	\$ 49 /hr.
Security Deposit	\$ 515 /rental	\$ 531 /rental
Set up Fee	\$ 26 /rental	\$ 27 /rental
Before/After Hours Fee	\$ 52 /hr.	\$ 54 /hr.
Weekday Security Deposit (Alcohol)	\$ 773 /rental	\$ 797 /rental
<b><u>BOTH</u></b>		
Non Resident Commercial	\$ 178 /hr.	\$ 184 /hr.
Resident Commercial	\$ 155 /hr.	\$ 160 /hr.
Non Resident	\$ 166 /hr.	\$ 171 /hr.



**Current Fees and Proposed Fee Adjustments**

Non Resident/Non Profit	\$ 155 /hr.	\$ 160 /hr.
Resident	\$ 131 /hr.	\$ 135 /hr.
Resident/Non Profit* (*Resident/Non-Profit receives 2 hours of free use per month)	\$ 125 /hr.	\$ 129 /hr.
Security Deposit	\$ 593 /rental	\$ 611 /rental
Set up Fee	\$ 78 /rental	\$ 81 /rental
Before/After Hours Fee	\$ 52 /hr.	\$ 54 /hr.
Weekday Security Deposit (Alcohol)	\$ 1030 /rental	\$ 1061 /rental

WITH PATIO

Non Resident Commercial	\$ 214 /hr.	\$ 221 /hr.
Resident Commercial	\$ 190 /hr.	\$ 196 /hr.
Non Resident	\$ 202 /hr.	\$ 209 /hr.
Non Resident/Non Profit	\$ 190 /hr.	\$ 196 /hr.
Resident	\$ 166 /hr.	\$ 171 /hr.

MULTIPURPOSE ROOM RENTAL - Prime Time (Saturday – Minimum 8 hour rental)

Non Resident Commercial	\$ 196 /hr.	\$ 202 /hr.
Resident Commercial	\$ 186 /hr.	\$ 192 /hr.
Non Resident	\$ 190 /hr.	\$ 196 /hr.
Non Resident/Non Profit	\$ 184 /hr.	\$ 190 /hr.
Resident	\$ 131 /hr.	\$ 135 /hr.
Resident/Non Profit	\$ 125 /hr.	\$ 129 /hr.
Security Deposit	\$ 593 /rental	\$ 611 /rental
Security Deposit (Alcohol)	\$ 1030 /rental	\$ 1061 /rental
Patio Only (4-hour minimum during non-operation hours)	\$ 52 /hr.	\$ 54 /hr.

WITH PATIO

Non Resident Commercial	\$ 201 /hr.	\$ 208 /hr.
Resident Commercial	\$ 192 /hr.	\$ 198 /hr.
Non Resident	\$ 196 /hr.	\$ 202 /hr.
Non Resident/Non Profit	\$ 190 /hr.	\$ 196 /hr.
Resident	\$ 136 /hr.	\$ 141 /hr.
Resident/Non Profit	\$ 131 /hr.	\$ 135 /hr.

MEETING ROOM RENTAL (2-hour minimum)

Non Resident Commercial	\$ 57 /hr.	\$ 59 /hr.
Resident Commercial	\$ 47 /hr.	\$ 49 /hr.
Non Resident	\$ 47 /hr.	\$ 49 /hr.
Non Resident/Non Profit	\$ 47 /hr.	\$ 49 /hr.
Resident	\$ 37 /hr.	\$ 39 /hr.
Resident/Non Profit	\$ 31 /hr.	\$ 32 /hr.
Security Deposit	\$ 181 /rental	\$ 187 /rental
Set up Fee	\$ 21 /rental	\$ 22 /rental

**DOWNTOWN ANAHEIM COMMUNITY CENTER**

ASSEMBLY ROOM RENTAL (\*Minimum 6 hour rental on Saturdays)

NO ALCOHOL

Non Resident Commercial	\$ 119 /hr.	\$ 123 /hr.
Resident Commercial	\$ 108 /hr.	\$ 112 /hr.
Non Resident	\$ 113 /hr.	\$ 117 /hr.
Non Resident, Non Profit	\$ 101 /hr.	\$ 105 /hr.
Resident	\$ 89 /hr.	\$ 92 /hr.
Resident/Non Profit* (*Resident/Non-Profit receives 2 hours of free use per month)	\$ 52 /hr.	\$ 54 /hr.



## Current Fees and Proposed Fee Adjustments

Security Deposit	\$ 515 /rental	\$ 531 /rental
Set-up Fee	\$ 52 /rental	\$ 54 /rental
Commercial Kitchen Use Fee - Resident	\$ 52 /rental	\$ 54 /rental
Commercial Kitchen Use Fee - Non-Resident	\$ 103 /rental	\$ 107 /rental

### ALCOHOL

Non Resident Commercial	\$ 190 /hr.	\$ 196 /hr.
Resident Commercial	\$ 179 /hr.	\$ 185 /hr.
Non Resident	\$ 184 /hr.	\$ 190 /hr.
Non Resident, Non Profit	\$ 173 /hr.	\$ 179 /hr.
Resident	\$ 160 /hr.	\$ 165 /hr.
Resident/Non Profit	\$ 131 /hr.	\$ 135 /hr.
Security Deposit	\$ 618 /rental	\$ 637 /rental
Set-up Fee (one area)	\$ 52 /rental	\$ 54 /rental

### PERFORMING ARTS/PATIO

#### NO ALCOHOL

Non Resident Commercial	\$ 52 /hr.	\$ 54 /hr.
Resident Commercial	\$ 47 /hr.	\$ 49 /hr.
Non Resident	\$ 47 /hr.	\$ 49 /hr.
Non Resident, Non Profit	\$ 47 /hr.	\$ 49 /hr.
Resident	\$ 42 /hr.	\$ 44 /hr.
Resident/Non Profit* (*Resident/Non-Profit receives 2 hours of free use per month)	\$ 42 /hr.	\$ 44 /hr.
Security Deposit	\$ 129 /rental	\$ 133 /rental
Set-up Fee (one area)	\$ 21 /rental	\$ 22 /rental
Set-up Fee (both areas)	\$ 42 /rental	\$ 44 /rental

#### ALCOHOL

Non Resident Commercial	\$ 73 /hr.	\$ 76 /hr.
Resident Commercial	\$ 67 /hr.	\$ 70 /hr.
Non Resident	\$ 67 /hr.	\$ 70 /hr.
Non Resident, Non Profit	\$ 67 /hr.	\$ 70 /hr.
Resident	\$ 57 /hr.	\$ 59 /hr.
Resident/Non Profit	\$ 52 /hr.	\$ 54 /hr.
Security Deposit	\$ 181 /rental	\$ 187 /rental
Set-up Fee (one area)	\$ 21 /rental	\$ 22 /rental
Set-up Fee (both areas)	\$ 42 /rental	\$ 44 /rental

### MEETING ROOM RENTAL

#### NO ALCOHOL

Non Resident Commercial	\$ 31 /hr.	\$ 32 /hr.
Resident Commercial	\$ 26 /hr.	\$ 27 /hr.
Non Resident	\$ 26 /hr.	\$ 27 /hr.
Non Resident, Non Profit	\$ 26 /hr.	\$ 27 /hr.
Resident	\$ 21 /hr.	\$ 22 /hr.
Resident/Non Profit* (*Resident/Non-Profit receives 2 hours of free use per month)	\$ 21 /hr.	\$ 22 /hr.
Security Deposit	\$ 129 /rental	\$ 133 /rental
Set-up Fee	\$ 21 /rental	\$ 22 /rental

#### ALCOHOL

Non Resident Commercial	\$ 57 /hr.	\$ 59 /hr.
Resident Commercial	\$ 47 /hr.	\$ 49 /hr.
Non Resident	\$ 47 /hr.	\$ 49 /hr.

## Current Fees and Proposed Fee Adjustments

Non Resident, Non Profit	\$ 47 /hr.	\$ 49 /hr.
Resident	\$ 37 /hr.	\$ 39 /hr.
Resident/Non Profit	\$ 31 /hr.	\$ 32 /hr.
Security Deposit	\$ 181 /rental	\$ 187 /rental
Set-up Fee	\$ 21 /rental	\$ 22 /rental

### EAST ANAHEIM COMMUNITY CENTER

#### MEETING ROOM RENTAL - NO ALCOHOL

##### OAK ROOM/CANYON ROOM

Non Resident Commercial	\$ 52 /hr.	\$ 54 /hr.
Resident Commercial	\$ 47 /hr.	\$ 49 /hr.
Non Resident	\$ 47 /hr.	\$ 49 /hr.
Non Resident, Non Profit	\$ 47 /hr.	\$ 49 /hr.
Resident	\$ 47 /hr.	\$ 49 /hr.
Resident/Non Profit* (*Resident/Non-Profit receives 2 hours of free use per month)	\$ 21 /hr.	\$ 22 /hr.
Security Deposit	\$ 129 /room	\$ 133 /room
Facility Equipment Use (minimum)	\$ 103 /rental	\$ 107 /rental
Facility Equipment Use (maximum)	\$ 515 /rental	\$ 531 /rental
Facility Equipment Damage Deposit (minimum)	\$ 103 /rental	\$ 107 /rental
Facility Equipment Damage Deposit (maximum)	\$ 1030 /rental	\$ 1061 /rental

##### EUCALYPTUS ROOM/TOYON ROOM

Non Resident Commercial	\$ 42 /hr.	\$ 44 /hr.
Resident Commercial	\$ 37 /hr.	\$ 39 /hr.
Non Resident	\$ 37 /hr.	\$ 39 /hr.
Non Resident, Non Profit	\$ 37 /hr.	\$ 39 /hr.
Resident	\$ 31 /hr.	\$ 32 /hr.
Resident/Non Profit* (*Resident/Non-Profit receives 2 hours of free use per month)	\$ 21 /hr.	\$ 22 /hr.
Security Deposit	\$ 129 /room	\$ 133 /room
Facility Equipment Use (minimum)	\$ 103 /rental	\$ 107 /rental
Facility Equipment Use (maximum)	\$ 515 /rental	\$ 531 /rental
Facility Equipment Damage Deposit (minimum)	\$ 103 /rental	\$ 107 /rental
Facility Equipment Damage Deposit (maximum)	\$ 1030 /rental	\$ 1061 /rental

##### BOARD ROOM/SYCAMORE ROOM

Non Resident Commercial	\$ 31 /hr.	\$ 32 /hr.
Resident Commercial	\$ 26 /hr.	\$ 27 /hr.
Non Resident	\$ 26 /hr.	\$ 27 /hr.
Non Resident, Non Profit	\$ 26 /hr.	\$ 27 /hr.
Resident	\$ 21 /hr.	\$ 22 /hr.
Resident/Non Profit* (*Resident/Non-Profit receives 2 hours of free use per month)	\$ 21 /hr.	\$ 22 /hr.
Security Deposit	\$ 129 /room	\$ 133 /room
Facility Equipment Use (minimum)	\$ 103 /rental	\$ 107 /rental
Facility Equipment Use (maximum)	\$ 515 /rental	\$ 531 /rental
Facility Equipment Damage Deposit (minimum)	\$ 103 /rental	\$ 107 /rental
Facility Equipment Damage Deposit (maximum)	\$ 1030 /rental	\$ 1061 /rental

**Current Fees and Proposed Fee Adjustments**

MEETING ROOM RENTAL - ALCOHOL

OAK ROOM/CANYON ROOM

Non Resident Commercial	\$ 78 /hr.	\$ 81 /hr.
Resident Commercial	\$ 62 /hr.	\$ 64 /hr.
Non Resident	\$ 62 /hr.	\$ 64 /hr.
Non Resident, Non Profit	\$ 62 /hr.	\$ 64 /hr.
Resident	\$ 57 /hr.	\$ 59 /hr.
Resident/Non Profit	\$ 52 /hr.	\$ 54 /hr.
Security Deposit	\$ 258 /room	\$ 266 /room
Facility Equipment Use (minimum)	\$ 103 /rental	\$ 107 /rental
Facility Equipment Use (maximum)	\$ 515 /rental	\$ 531 /rental
Facility Equipment Damage Deposit (minimum)	\$ 103 /rental	\$ 107 /rental
Facility Equipment Damage Deposit (maximum)	\$ 1030 /rental	\$ 1061 /rental

EUCALYPTUS ROOM/TOYON ROOM

Non Resident Commercial	\$ 67 /hr.	\$ 70 /hr.
Resident Commercial	\$ 57 /hr.	\$ 59 /hr.
Non Resident	\$ 57 /hr.	\$ 59 /hr.
Non Resident, Non Profit	\$ 57 /hr.	\$ 59 /hr.
Resident	\$ 47 /hr.	\$ 49 /hr.
Resident/Non Profit	\$ 42 /hr.	\$ 44 /hr.
Security Deposit	\$ 258 /room	\$ 266 /room
Facility Equipment Use (minimum)	\$ 103 /rental	\$ 107 /rental
Facility Equipment Use (maximum)	\$ 515 /rental	\$ 531 /rental
Facility Equipment Damage Deposit (minimum)	\$ 103 /rental	\$ 107 /rental
Facility Equipment Damage Deposit (maximum)	\$ 1030 /rental	\$ 1061 /rental

BOARD ROOM/SYCAMORE ROOM

Non Resident Commercial	\$ 57 /hr.	\$ 59 /hr.
Resident Commercial	\$ 47 /hr.	\$ 49 /hr.
Non Resident	\$ 47 /hr.	\$ 49 /hr.
Non Resident, Non Profit	\$ 47 /hr.	\$ 49 /hr.
Resident	\$ 42 /hr.	\$ 44 /hr.
Resident/Non Profit	\$ 31 /hr.	\$ 32 /hr.
Security Deposit	\$ 258 /room	\$ 266 /room
Facility Equipment Use (minimum)	\$ 103 /rental	\$ 107 /rental
Facility Equipment Use (maximum)	\$ 515 /rental	\$ 531 /rental
Facility Equipment Damage Deposit (minimum)	\$ 103 /rental	\$ 107 /rental
Facility Equipment Damage Deposit (maximum)	\$ 1030 /rental	\$ 1061 /rental

MARTIN RECREATION CENTER

NO ALCOHOL

Non Resident Commercial	\$ 73 /hr.	\$ 76 /hr.
Resident Commercial	\$ 57 /hr.	\$ 59 /hr.
Non Resident	\$ 52 /hr.	\$ 54 /hr.
Non Resident/Non Profit	\$ 47 /hr.	\$ 49 /hr.
Resident	\$ 42 /hr.	\$ 44 /hr.
Resident/Non Profit	\$ 37 /hr.	\$ 39 /hr.
Security Deposit	\$ 206 /rental	\$ 213 /rental
Set-up Fee	\$ 37 /rental	\$ 39 /rental

ALCOHOL

**Current Fees and Proposed Fee Adjustments**

Non Resident Commercial	\$ 93 /hr.	\$ 96 /hr.
Resident Commercial	\$ 78 /hr.	\$ 81 /hr.
Non Resident	\$ 73 /hr.	\$ 76 /hr.
Non Resident/Non Profit	\$ 67 /hr.	\$ 70 /hr.
Resident	\$ 62 /hr.	\$ 64 /hr.
Resident/Non Profit	\$ 57 /hr.	\$ 59 /hr.
Security Deposit	\$ 515 /rental	\$ 531 /rental
Set-up Fee	\$ 37 /rental	\$ 39 /rental

**OAK CANYON NATURE CENTER**

**BACK DECK RENTAL**

**NO ALCOHOL**

Non Resident Commercial	\$ 52 /hr.	\$ 54 /hr.
Resident Commercial	\$ 47 /hr.	\$ 49 /hr.
Non Resident/Individual	\$ 42 /hr.	\$ 44 /hr.
Non Resident, Non Profit	\$ 37 /hr.	\$ 39 /hr.
Resident/Individual	\$ 31 /hr.	\$ 32 /hr.
Resident/Non Profit* (*Resident/Non-Profit receives 2 hours of free use per month)	\$ 26 /hr.	\$ 27 /hr.
Security Deposit	\$ 149 /rental	\$ 154 /rental

**ALCOHOL**

Non Resident Commercial	\$ 78 /hr.	\$ 81 /hr.
Resident Commercial	\$ 73 /hr.	\$ 76 /hr.
Non Resident/Individual	\$ 67 /hr.	\$ 70 /hr.
Non Resident, Non Profit	\$ 62 /hr.	\$ 64 /hr.
Resident/Individual	\$ 57 /hr.	\$ 59 /hr.
Resident/Non Profit* (*Resident/Non-Profit receives 2 hours of free use per month)	\$ 52 /hr.	\$ 54 /hr.
Security Deposit	\$ 258 /rental	\$ 266 /rental
Before/After Hours Staffing Charge	\$ 42 /hr.	\$ 44 /hr.
Sound System Rental Fee (includes set-up)	\$ 206 /rental	\$ 213 /rental
Portable Movie Screen (includes set-up)	\$ 52 /rental	\$ 54 /rental
Equipment Damage Fee (repair/replacement)	Direct Cost	Direct Cost

**AMPHITHEATRE**

**NO ALCOHOL**

Non Resident Commercial	\$ 60 /hr.	\$ 62 /hr.
Resident Commercial	\$ 54 /hr.	\$ 56 /hr.
Non Resident/Individual	\$ 48 /hr.	\$ 50 /hr.
Resident/Non Profit* (*Resident/Non-Profit receives 2 hours of free use per month)	\$ 42 /hr.	\$ 44 /hr.
Resident/Individual	\$ 37 /hr.	\$ 39 /hr.
Resident/Non Profit	\$ 26 /hr.	\$ 27 /hr.
Security Deposit	\$ 149 /rental	\$ 154 /rental

**ALCOHOL**

Non Resident Commercial	\$ 89 /hr.	\$ 92 /hr.
Resident Commercial	\$ 84 /hr.	\$ 87 /hr.
Non Resident/Individual	\$ 78 /hr.	\$ 81 /hr.
Non Resident, Non Profit	\$ 72 /hr.	\$ 75 /hr.
Resident/Individual	\$ 65 /hr.	\$ 67 /hr.
Resident/Non Profit	\$ 60 /hr.	\$ 62 /hr.
Security Deposit	\$ 258 /rental	\$ 266 /rental
Before/After Hours Staffing Charge	\$ 42 /hr.	\$ 44 /hr.

**Current Fees and Proposed Fee Adjustments**

Sound System Rental Fee (includes set-up)	\$ 206 /rental	\$ 213 /rental
Portable Movie Screen (includes set-up)	\$ 52 /rental	\$ 54 /rental
Equipment Damage Fee (repair/replacement)	Direct Cost	Direct Cost
Set-up Fee	\$ 26 /rental	\$ 27 /rental

**MISCELLANEOUS**

Nature Center Group Tours and Programs (minimum)	\$ 4 /ea.	\$ 5 /ea.
Nature Center Group Tours and Programs (maximum)	\$ 16 /ea.	\$ 17 /ea.
O.A.K.S. Summer Day Camp	\$ 114 /ea.	\$ 118 /ea.
Teen Survival Camp	\$ 124 /ea.	\$ 128 /ea.
Materials Fee (minimum)	\$ 5 /ea.	\$ 6 /ea.
Materials Fee (maximum)	\$ 26 /ea.	\$ 27 /ea.
Refund Fee (no wait list)	\$ 6 /ea.	\$ 7 /ea.
Photo Permit (4 hr. maximum)	\$ 26 /hr.	\$ 27 /hr.
Birthday Packages (minimum)	\$ 13 /ea.	\$ 14 /ea.
Birthday Packages (maximum)	\$ 16 /ea.	\$ 17 /ea.

**WEDDING PACACKAGES - Amphitheatre Rental (4Hrs.), Sound System Rental, Staff (2), Rehearsal**

Resident	\$ 842	\$ 868
Non Resident	\$ 913	\$ 941

**OTHER RECREATION CENTERS (Reid Park, Peralta Park, and Peralta Canyon Recreation Center)**

Non Resident Commercial	\$ 42 /hr.	\$ 44 /hr.
Resident Commercial	\$ 37 /hr.	\$ 39 /hr.
Non Resident	\$ 30 /hr.	\$ 31 /hr.
Non Resident, Non Profit	\$ 26 /hr.	\$ 27 /hr.
Resident	\$ 21 /hr.	\$ 22 /hr.
Resident/Non Profit	\$ 16 /hr.	\$ 17 /hr.
Security Deposit	\$ 129 /rental	\$ 133 /rental
Setup Fee	\$ 24 /rental	\$ 25 /rental

**PEARSON PARK AMPHITHEATRE**

Non Resident Commercial	\$ 356 /hr. + stage crew	\$ 367 /hr. + stage crew
Resident Commercial	\$ 297 /hr. + stage crew	\$ 306 /hr. + stage crew
Non Resident	\$ 267 /hr. + stage crew	\$ 276 /hr. + stage crew
Non Resident/Non Profit	\$ 237 /hr. + stage crew	\$ 245 /hr. + stage crew
Resident	\$ 220 /hr. + stage crew	\$ 227 /hr. + stage crew
Resident/Non Profit	\$ 190 /hr. + stage crew	\$ 196 /hr. + stage crew
Deposit (minimum)	\$ 515 /rental	\$ 531 /rental
Deposit (maximum)	\$ 1030 /rental	\$ 1061 /rental
Alcohol Security Fee (minimum)	\$ 297 /hr.	\$ 306 /hr.
Alcohol Security Fee (maximum)	\$ 1030 /hr.	\$ 1061 /hr.
Movie Screen and Projector	\$ 258 /use	\$ 266 /use
House Manager	\$ 42 /hr.	\$ 44 /hr.
Post Event Cleaning (minimum)	\$ 206 /rental	\$ 213 /rental
Post Event Cleaning (maximum)	\$ 515 /rental	\$ 531 /rental
Dumpster Rental (minimum)	\$ 83 /rental	\$ 86 /rental
Dumpster Rental (maximum)	\$ 1030 /rental	\$ 1061 /rental
Banner Installation (minimum)	\$ 52 /rental	\$ 54 /rental
Banner Installation (maximum)	\$ 515 /rental	\$ 531 /rental
Marley Floor Rental	\$ 412 /rental	\$ 425 /rental
Event Coordination Fee	\$ 78 /2 hrs.	\$ 81 /2 hrs.

**PATIO**

Non Resident Commercial	\$ 60 /hr. + staff	\$ 62 /hr. + staff
-------------------------	--------------------	--------------------

## Current Fees and Proposed Fee Adjustments

Resident Commercial	\$ 54 /hr. + staff	\$ 56 /hr. + staff
Non Resident	\$ 42 /hr. + staff	\$ 44 /hr. + staff
Non Resident/Non Profit	\$ 37 /hr. + staff	\$ 39 /hr. + staff
Resident	\$ 37 /hr. + staff	\$ 39 /hr. + staff
Resident/Non Profit	\$ 31 /hr. + staff	\$ 32 /hr. + staff
Deposit	\$ 129 /rental	\$ 133 /rental

### FAMILY CONCERTS AND RECITALS

General Admission	\$ 4 /ea.	\$ 5 /ea.
Season Pass (dependent upon number of fee shows in season)	\$ 3.00 /per show	\$ 4 /per show

### LIVE THEATRE PERFORMANCES

Adult (minimum)	\$ 6 /ea.	\$ 7 /ea.
Adult (maximum)*	\$ 47 /ea.	\$ 49 /ea.
Senior / Student / Child (minimum)	\$ 6 /ea.	\$ 7 /ea.
Senior / Student / Child (maximum)*	\$ 37 /ea.	\$ 39 /ea.

\*Based on cost of event

### SHOW WAGON

Non Resident	\$ 258 /day + Direct Costs	\$ 266 /day + Direct Costs
Non Profit	\$ 155 /day + Direct Costs	\$ 160 /day + Direct Costs
Resident	\$ 93 /day + Direct Costs	\$ 96 /day + Direct Costs

### ARTS/CULTURAL PROGRAMS

Adult/Family Excursions (minimum)	\$ 11 /ea.	\$ 12 /ea.
Adult/Family Excursions (maximum)*	\$ 155 /ea.	\$ 160 /ea.

\*Based on cost of event

### MISCELLANEOUS

Seasonal Special Events (minimum)	\$ 6 Fee set to cover expens	\$ 7 Fee set to cover expenses
Seasonal Special Events (maximum)	\$ 103 Fee set to cover expens	\$ 107 Fee set to cover expenses
Special Craft Classes (minimum)	\$ 6 Fee set to cover expens	\$ 7 Fee set to cover expenses
Special Craft Classes (maximum)	\$ 103 Fee set to cover expens	\$ 107 Fee set to cover expenses
Mobile Unit Rentals	\$ 67 /hr. per 25 participants	\$ 70 /hr. per 25 participants
Mobile Unit Rentals - Craft	\$ 3 /craft	\$ 4 /craft
Mobile Unit Rentals - Additional Hours	\$ 42 /hr.	\$ 44 /hr.
Basic Games/Crafts	\$ 67 /hr. per 25 participants	\$ 70 /hr. per 25 participants
Basic Games/Crafts - Additional Fees	\$ 21 /hr. for every 10 addition	\$ 22 /hr. for every 10 additional pa
Youth Excursions (minimum)	\$ 6 Fee set to cover expens	\$ 7 Fee set to cover expenses +1
Youth Excursions (maximum)	\$ 103 Fee set to cover expens	\$ 107 Fee set to cover expenses
Mobile Unit Rentals/Theme Parties	\$ 109 /hr. up to 12 participants	\$ 113 /hr. up to 12 participants
Mobile Unit Rentals/Theme Parties - Additional Fees	\$ 6 /additional participant	\$ 7 /additional participant
Mobile Unit Rentals/Theme Parties - Additional Hours	\$ 48 /hr.	\$ 50 /hr.
CampVenture	\$ 143 /first child	\$ 148 /first child
CampVenture - Additional Sibling - Sibling Discount	\$ 114 /each additional sibling	\$ NC /each additional sibling
Late Registration Fee	\$ 11 Each occurrence	\$ 12 Each occurrence
Day Camp Late Pick-Up Fee	\$ 2 /min.	\$ 3 /min.
Day Camp Change Fee/Withdrawal Fee	\$ 11 /ea.	\$ 12 /ea.

### SPORTS LEAGUES

#### YOUTH SPORTS (All Youth Sports include T-shirt uniform and a participation award)

Soccer	\$ 85 /ea.	\$ 88 /ea.
Flag Football	\$ 85 /ea.	\$ 88 /ea.
Basketball	\$ 85 /ea.	\$ 88 /ea.

## Current Fees and Proposed Fee Adjustments

Cheerleading	\$ 85 /ea.	\$ 88 /ea.
Baseball	\$ 85 /ea.	\$ 88 /ea.
Hockey	\$ 85 /ea.	\$ 88 /ea.
Youth Special Camps/ Clinics	\$ 42 /ea.	\$ 44 /ea.
Late Registration Fee	\$ 6 /ea.	\$ 7 /ea.

### ADULT SOFTBALL

Softball Tournament	\$ 273 /team	\$ 282 /team
Adult Softball Umpire Fee	\$ 31 /game-one official	\$ 32 /game-one official
Slow Pitch Softball (10 games + playoffs)	\$ 361 /team	\$ 372 /team
Slow Pitch Softball (8 games + playoffs)	\$ 299 /team	\$ 308 /team
Protest Fee	\$ 21 /ea.	\$ 22 /ea.
Misclassification Discount	\$ 47 /ea.	\$ 49 /ea.
Forfeit Fee	\$ 27 /game	\$ 28 /game

### ADULT SOCCER

Adult Soccer 11v11 League Fee (All Leagues)	\$ 685 /season	\$ 706 /season
Adult Soccer Semi-Pro Officials Fee	\$ 53 /game/team - three offici	\$ 55 /game/team - three officials
Adult Soccer Other Leagues Referee Fee	\$ 31 /game/team - three offici	\$ 32 /game/team - three officials
I.D. Cards (Per Season)	\$ 11 /ea.	\$ 12 /ea.
I.D. Replacement	\$ 6 /ea.	\$ 7 /ea.
Forfeit Fee Semi-Pro League	\$ 165 /game	\$ 170 /game
Forfeit Fee Other Leagues	\$ 145 /game	\$ 150 /game
Protest Fee	\$ 26 /ea.	\$ 27 /ea.
Excess Trash Fee	\$ 26 /ea.	\$ 27 /ea.
Fighting Fee (minimum)	\$ 52 /ea.	\$ 54 /ea.
Fighting Fee (maximum)	\$ 103 /ea.	\$ 107 /ea.
Glover Stadium Tickets (Semi)	\$ 4 /ea.	\$ 5 /ea.
Glover Stadium Tickets (Final)	\$ 5 /ea.	\$ 6 /ea.

### ADULT SOCCER - 7 on 7

Soccer Registration	\$ 308 /team	\$ 318 /team
Early Registration Discount Fee	\$ 26 /team	\$ 27 /team
Forfeit Fee	\$ 31 /game	\$ 32 /game
Forfeit Fee before 2 pm	\$ 21 /game	\$ 22 /game
Identification Card	\$ 11 /ea.	\$ 12 /ea.
Referee Fee	\$ 42 /game	\$ 44 /game

### ADULT PICK-UP SOCCER

Player Fee each night	\$ 4 /ea.	\$ 5 /ea.
-----------------------	-----------	-----------

### ADULT FLAG FOOTBALL

Flag Football Registration Fee (10 games + playoffs)	\$ 376 /team	\$ 388 /team
Referee Fee (minimum)	\$ 21 /game	\$ 22 /game
Referee Fee (maximum)	\$ 31 /game	\$ 32 /game
Forfeit Fee	\$ 60 /game	\$ 62 /game

### ADULT BASKETBALL

Basketball Registration Fee (10 games + playoffs)	\$ 376 /team	\$ 388 /team
Early Registration Discount Fee	\$ 26 /team	\$ 27 /team
Referee Fee (minimum)	\$ 21 /game	\$ 22 /game
Referee Fee (maximum)	\$ 31 /game	\$ 32 /game
Forfeit Fee	\$ 52 /game	\$ 54 /game

### ADULT PICK-UP BASKETBALL AND VOLLEYBALL

**Current Fees and Proposed Fee Adjustments**

Player Fee each night	\$	4 /ea.	\$	5 /ea.
-----------------------	----	--------	----	--------

**ADULT SPORTS AWARDS**

Additional T-shirts	\$	16 /ea.	\$	17 /ea.
Additional Jerseys	\$	21 /ea.	\$	22 /ea.

**TINY TOTS**

Field Trips (minimum)	\$	3 /trip	\$	4 /trip
Field Trips (maximum)	\$	21 /trip	\$	22 /trip
Photographs (minimum)	\$	4 /photo package	\$	5 /photo package
Photographs (maximum)	\$	26 /photo package	\$	27 /photo package
Daily session	\$	17 /day	\$	18 /day
Late Pick-up	\$	2 /min.	\$	3 /min.

**SPECIAL INTEREST CLASSES**

Recreation Classes at City Facilities:	Instructional fee + 35% of gross	Instructional fee + 35% of gross revenue
Recreation Classes at Outside Facilities:	Instructional fee + 30% of gross	Instructional fee + 30% of gross revenue
Anaheim ICE Classes and Anaheim Family YMCA Classes:	Instructional fee + 25% of gross	Instructional fee + 25% of gross revenue

**MISCELLANEOUS CLASS FEES**

Recreation Class Withdrawal Fee (Classes meet 3 or more times)

Request for refund made 5 days or less to the first class meeting	10% of Fee	10% of Fee
Request for refund made 24 hours prior the first class meeting	15% of Fee	15% of Fee

Recreation Workshop Withdrawal Fee (Workshops meet 1-2 times)

Request for refund made 5 days or less to the first day of the workshop	10% of Fee	10% of Fee
Request for refund made 24 hours prior the first day of the workshop	15% of Fee	15% of Fee

Military/Veteran Discount, Early Bird Registration, Multi-class registration

10% discount, not to exceed \$10 per	10% discount, not to exceed \$11 per
--------------------------------------	--------------------------------------

**SUPPORT SERVICES UNIT**

DOJ Fingerprint Processing for Outside Agencies	\$	29	\$	30
---	----	----	----	----

**PRIVATE PARTY POOL RENTAL (2-Hour minimum)**

Commercial (1-50 people)	\$	464 /for 2 hrs.	\$	478 /for 2 hrs.
Commercial (1-50 people) - Additional Hours	\$	116 /ea. Additional hr.	\$	120 /ea. Additional hr.
Non Resident (1-50 people)	\$	340 /for 2 hrs.	\$	351 /for 2 hrs.
Non Resident (1-50 people) - Additional Hours	\$	85 /ea. Additional hr.	\$	88 /ea. Additional hr.
Non Resident/Non Profit (1-50 people)	\$	299 /for 2 hrs.	\$	308 /for 2 hrs.
Non Resident/Non Profit (1-50 people) - Additional Hours	\$	75 /ea. Additional hr.	\$	78 /ea. Additional hr.
Resident (1-50 people)	\$	258 /for 2 hrs.	\$	266 /for 2 hrs.
Resident (1-50 people) - Additional Hours	\$	64 /ea. Additional hr.	\$	66 /ea. Additional hr.
Resident/Non Profit (1-50 people)	\$	206 /for 2 hrs.	\$	213 /for 2 hrs.
Resident/Non Profit (1-50 people) - Additional Hours	\$	52 /ea. Additional hr.	\$	54 /ea. Additional hr.

**PEARSON PARK POOL**

**OPERATING HOURS: MARCH 15-SEPTEMBER 15**

Resident/Non-Profit Swim Team	\$	49 /hr.	\$	51 /hr.
Resident Club Swim Team	\$	57 /hr.	\$	59 /hr.
Non-Resident/Non-Profit Swim Team	\$	62 /hr.	\$	64 /hr.
Non-Resident/Club Swim Team	\$	67 /hr.	\$	70 /hr.



**Current Fees and Proposed Fee Adjustments**

**NON-OPERATING HOURS: SEPTEMBER 16-MARCH 14**

Resident/Non-Profit Swim Team	\$ 67 /hr.	\$ 70 /hr.
Resident Club Swim Team	\$ 78 /hr.	\$ 81 /hr.
Non-Resident/Non-Profit Swim Team	\$ 78 /hr.	\$ 81 /hr.
Non-Resident/Club Swim Team	\$ 93 /hr.	\$ 96 /hr.

***PARKS - FACILITY SCHEDULING***

**BASEBALL/SOFTBALL "A" FIELDS (2-hour minimum)**

Non Resident Commercial	\$ 32 /hr.	\$ 33 /hr.
Resident Commercial	\$ 26 /hr.	\$ 27 /hr.
Non Resident	\$ 25 /hr.	\$ 26 /hr.
Non Resident/Non Profit	\$ 23 /hr.	\$ 24 /hr.
Resident	\$ 21 /hr.	\$ 22 /hr.
Resident/Non Profit* (*No charge to resident non-profit youth organizations.)	\$ 20 /hr.	\$ 21 /hr.

**BASEBALL "A" FIELDS - BROOKHURST/BOYSEN (2-hour minimum)**

Non Resident Commercial	\$ 43 /hr.	\$ 45 /hr.
Resident Commercial	\$ 37 /hr.	\$ 39 /hr.
Non Resident	\$ 36 /hr.	\$ 38 /hr.
Non Resident/Non Profit	\$ 33 /hr.	\$ 34 /hr.
Resident	\$ 31 /hr.	\$ 32 /hr.
Resident/Non Profit* (*No charge to resident non-profit youth organizations.)	\$ 30 /hr.	\$ 31 /hr.

**BASEBALL "B" FIELDS - Soccer/Football/Rugby/Cricket/Open Area (2-hour minimum)**

**ADULT**

Non Resident Commercial	\$ 24 /hr.	\$ 25 /hr.
Resident Commercial	\$ 20 /hr.	\$ 21 /hr.
Non Resident	\$ 19 /hr.	\$ 20 /hr.
Non Resident/Non Profit	\$ 18 /hr.	\$ 19 /hr.
Resident	\$ 18 /hr.	\$ 19 /hr.
Resident/Non Profit	\$ 18 /hr.	\$ 19 /hr.

**YOUTH**

Non Resident Commercial	\$ 22 /hr.	\$ 23 /hr.
Resident Commercial	\$ 18 /hr.	\$ 19 /hr.
Non Resident	\$ 17 /hr.	\$ 18 /hr.
Non Resident/Non Profit	\$ 16 /hr.	\$ 17 /hr.
Resident	NC	NC
Resident/Non Profit	NC	NC

**GLOVER STADIUM - Soccer/Football (4-hour minimum)**

Non Resident Commercial	\$ 157 /hr.	\$ 162 /hr.
Resident Commercial	\$ 148 /hr.	\$ 153 /hr.
Non Resident	\$ 87 /hr.	\$ 90 /hr.
Non Resident/Non Profit	\$ 83 /hr.	\$ 86 /hr.
Resident	\$ 75 /hr.	\$ 78 /hr.
Resident/Non Profit	\$ 73 /hr.	\$ 76 /hr.

**DEE FEE FIELD - Baseball (2-hour minimum)**

Non Resident Commercial	\$ 63 /hr.	\$ 65 /hr.
Resident Commercial	\$ 60 /hr.	\$ 62 /hr.
Non Resident	\$ 59 /hr.	\$ 61 /hr.
Non Resident/Non Profit	\$ 56 /hr.	\$ 58 /hr.
Resident	\$ 48 /hr.	\$ 50 /hr.

**Current Fees and Proposed Fee Adjustments**

Resident/Non Profit	\$ 46 /hr.	\$ 48 /hr.
---------------------	------------	------------

**FIELD LIGHTING**

"A" Fields	\$ 16 /hr.	\$ 17 /hr.
Glover Stadium, Dee Fee Field	\$ 23 /hr.	\$ 24 /hr.
Boysen and Brookhurst Baseball Field	\$ 23 /hr.	\$ 24 /hr.

**FIELD PREPARATION**

Baseball/Softball Field Prep (minimum)	\$ 56 /field	\$ 58 /field
Baseball/Softball Field Prep (maximum)	\$ 73 /field	\$ 76 /field
Soccer Field Layout/Prep	\$ 419 /field	\$ 432 /field
Soccer Field Touch Up	\$ 124 /field	\$ 128 /field
Football Field Layout/Prep	\$ 586 /field	\$ 604 /field
Football Field Touch Up	\$ 335 /field	\$ 346 /field
Boysen/Brookhurst Field Prep	\$ 140 /field	\$ 145 /field
Dee Fee Field Prep	\$ 178 /field	\$ 184 /field

**SUPPORT/SUPERVISION CHARGES**

Dee Fee Baseball Clean up	\$ 155 /rental	\$ 160 /rental
Glover Stadium Clean up	\$ 449 /rental	\$ 463 /rental
Additional Clean up (per person)	\$ 31 /hr.	\$ 32 /hr.
Portable Restroom Rental	\$ 114 /restroom	\$ 118 /restroom
Portable Restrooms (same day pick up and delivery)	\$ 181 /restroom	\$ 187 /restroom
Electricity	\$ 6 /hr.	\$ 7 /hr.
Bases Provided per Field	\$ 36 /field	\$ 38 /field
Container Deposit	\$ 52 /container	\$ 54 /container
Snack Bar Rental Fee	\$ 52 /rental	\$ 54 /rental
Snack Bar Key Deposit	\$ 37 /rental	\$ 39 /rental
Youth No Show Field Prep	\$ 56 /rental	\$ 58 /rental
Tournament Deposit	\$ 155 /rental	\$ 160 /rental

**PICNIC SHELTERS/OPEN PICNIC AREAS (4-Hour minimum)**

**PICNIC SHELTER**

Non Resident Commercial	\$ 27 /hr.	\$ 28 /hr.
Resident Commercial	\$ 23 /hr.	\$ 24 /hr.
Non Resident	\$ 18 /hr.	\$ 19 /hr.
Non Resident/Non Profit	\$ 11 /hr.	\$ 12 /hr.
Resident	\$ 6 /hr.	\$ 7 /hr.
Resident/Non Profit	\$ 4 /hr.	\$ 5 /hr.

**OPEN PICNIC AREA**

Non Resident Commercial	\$ 21 /hr.	\$ 22 /hr.
Resident Commercial	\$ 17 /hr.	\$ 18 /hr.
Non Resident	\$ 13 /hr.	\$ 14 /hr.
Non Resident/Non Profit	\$ 7 /hr.	\$ 8 /hr.
Resident	\$ 3 /hr.	\$ 4 /hr.
Resident/Non Profit	NC	NC

**SPECIAL EVENT (Maximum 9-Hour Use)**

*Special event charges are applied if the event has a major impact on the facility, including increased security, supervision or turf protection.*

*Examples include corporate events, carnivals, circus, or motion picture production.*

Non Resident Commercial	\$ 1185 + direct costs + 10% gross	\$ 1221 + direct costs + 10% gross
Non-Resident Commercial - Additional Hours	\$ 54 /hr.	\$ 56 /hr.

**Current Fees and Proposed Fee Adjustments**

Resident Commercial	\$ 1067 + direct costs	\$ 1100 + direct costs
	+ 10% gross	+ 10% gross
Resident Commercial - Additional Hours	\$ 48 /hr.	\$ 50 /hr.
Non Resident	\$ 948 + direct costs	\$ 977 + direct costs
Non Resident - Additional Hours	\$ 42 /hr.	\$ 44 /hr.
Non Resident/Non Profit	\$ 830 + direct costs	\$ 855 + direct costs
Non Resident/Non Profit - Additional Hours	\$ 37 /hr.	\$ 39 /hr.
Resident	\$ 649 + direct costs	\$ 669 + direct costs
Resident - Additional Hours	\$ 30 /hr.	\$ 31 /hr.
Resident/Non Profit	\$ 593 + direct costs	\$ 611 + direct costs
Resident/Non Profit - Additional Hours	\$ 24 /hr.	\$ 25 /hr.
Special Event Security Deposit	30% of event fees	30% of event fees

**SWAN STREET PARKING LOT (4-hour minimum)**

Non Resident Commercial	\$ 103 /hr. + staff	\$ 107 /hr. + staff
Resident Commercial	\$ 83 /hr. + staff	\$ 86 /hr. + staff
Non Resident	\$ 62 /hr. + staff	\$ 64 /hr. + staff
Non Resident/Non Profit	\$ 42 /hr. + staff	\$ 44 /hr. + staff
Resident	\$ 21 /hr. + staff	\$ 22 /hr. + staff
Resident/Non Profit	\$ 11 /hr. + staff	\$ 12 /hr. + staff

**TENNIS COURTS**

**LIGHTED**

Non Resident Commercial	\$ 16 /hr.	\$ 17 /hr.
Resident Commercial	\$ 11 /hr.	\$ 12 /hr.
Non Resident	\$ 8 /hr.	\$ 9 /hr.
Non Resident/Non Profit	\$ 7 /hr.	\$ 8 /hr.
Resident	\$ 6 /hr.	\$ 7 /hr.
Resident/Non Profit	\$ 5 /hr.	\$ 6 /hr.

**NON-LIGHTED**

Non Resident Commercial	\$ 10 /hr.	\$ 11 /hr.
Resident Commercial	\$ 8 /hr.	\$ 9 /hr.
Non Resident	\$ 5 /hr.	\$ 6 /hr.
Non Resident/Non Profit	\$ 5 /hr.	\$ 6 /hr.
Resident	\$ 4 /hr.	\$ 5 /hr.
Resident/Non Profit	NC	NC

**HUMAN SERVICES/NEIGHBORHOOD CENTERS**

**MANZANITA, MIRALOMA, PONDEROSA**

**MULTI-PURPOSE ROOM**

Non Resident Commercial	\$ 65 /hr.	\$ 67 /hr.
Resident Commercial	\$ 54 /hr.	\$ 56 /hr.
Non Resident	\$ 47 /hr.	\$ 49 /hr.
Non Resident, Non Profit	\$ 47 /hr.	\$ 49 /hr.
Resident	\$ 42 /hr.	\$ 44 /hr.
Resident/Non Profit	\$ 37 /hr.	\$ 39 /hr.
Security Deposit	\$ 155 /rental	\$ 160 /rental
Set-Up Fee	\$ 21 /rental	\$ 22 /rental

**WEST ANAHEIM YOUTH CENTER (NON-ALCOHOL FACILITY)**

**Current Fees and Proposed Fee Adjustments**

**MEETING ROOM FEES (DAYTIME, MONDAY-THURSDAY)**

Security Deposit	\$	155 /rental	\$	160 /rental
Set-up Fee	\$	21 /rental	\$	22 /rental
Resident/Non-Profit Youth Programs	NC		NC	
Resident/Non-Profit Programs	\$	21 /hr.	\$	22 /hr.
Resident	\$	16 /hr.	\$	17 /hr.
Resident/Commercial	\$	30 /hr.	\$	31 /hr.
Non-Resident/Commercial	\$	37 /hr.	\$	39 /hr.
Non-Resident	\$	21 /hr.	\$	22 /hr.
Non-Resident/Non-Profit	\$	21 /hr.	\$	22 /hr.

**MEETING ROOM FEES (EVENING, MONDAY-THURSDAY)**

Security Deposit	\$	155 /rental	\$	160 /rental
Set-up Fee	\$	21 /rental	\$	22 /rental
Resident/Non-Profit Youth Programs	NC		NC	
Resident/Non-Profit Programs	\$	26 /hr.	\$	27 /hr.
Resident	\$	21 /hr.	\$	22 /hr.
Resident/Commercial	\$	37 /hr.	\$	39 /hr.
Non-Resident/Commercial	\$	42 /hr.	\$	44 /hr.
Non-Resident	\$	26 /hr.	\$	27 /hr.
Non-Resident/Non-Profit	\$	26 /hr.	\$	27 /hr.

**MEETING ROOM FEES (ALL HOURS, FRIDAY-SUNDAY)**

Security Deposit	\$	155 /rental	\$	160 /rental
Set-up Fee	\$	21 /rental	\$	22 /rental
Resident/Non-Profit Youth Programs	\$	31 /hr.	\$	32 /hr.
Resident/Non-Profit Programs	\$	37 /hr.	\$	39 /hr.
Resident	\$	31 /hr.	\$	32 /hr.
Resident/Commercial	\$	42 /hr.	\$	44 /hr.
Non-Resident/Commercial	\$	48 /hr.	\$	50 /hr.
Non-Resident	\$	37 /hr.	\$	39 /hr.
Non-Resident/Non-Profit	\$	31 /hr.	\$	32 /hr.

**DOWNTOWN ANAHEIM YOUTH CENTER (Annual membership/registration fees are due in January for each calendar year.)**

**MEMBERSHIP**

**RESIDENT**

Lunch Hour Fitness – City Employees	NC		NC	
Lunch Hour Fitness – Non-City Employees	\$	78 /ea.	\$	81 /ea.
I.D. Replacement	\$	6 /card	\$	7 /card

**NON-RESIDENT**

Lunch Hour Fitness – City Employees	NC		NC	
Lunch Hour Fitness – Non-City Employees	\$	103 /ea.	\$	107 /ea.
I.D. Replacement	\$	6 /card	\$	7 /card

**LATE MEMBERSHIPS: Applies to memberships after August 31 annually**

**RESIDENT**

Lunch Hour Fitness – City Employees	NC		NC	
Lunch Hour Fitness – Non-City Employees	\$	78 /ea.	\$	81 /ea.
I.D. Replacement	\$	6 /card	\$	7 /card

**NON-RESIDENT**

**Current Fees and Proposed Fee Adjustments**

Lunch Hour Fitness – City Employees	NC		NC
Lunch Hour Fitness – Non-City Employees	\$	103 /ea.	\$ 107 /ea.
I.D. Replacement	\$	6 /card	\$ 7 /card

**WEST ANAHEIM YOUTH CENTER / EAST ANAHEIM GYMNASIUM / DOWNTOWN ANAHEIM YOUTH CENTER / PONDEROSA GYMNASIUM**

**ANNUAL MEMBERSHIP FEES (Adult lunchtime – annual fees due each January per the calendar year.)**

**RESIDENT**

Lunch Hour Fitness Program – City Employees*	NC		NC
Lunch Hour Fitness Program – Non-City Employees	\$	78 /ea.	\$ 81 /ea.
I.D. Replacement	\$	6 /card	\$ 7 /card

*\*Lunch Hour Fitness Program membership may be used only Monday – Friday*

**NON-RESIDENT**

Lunch Hour Fitness Program – City Employees*	NC		NC
Lunch Hour Fitness Program – Non-City Employees	\$	103 /ea.	\$ 107 /ea.
I.D. Replacement	\$	6 /card	\$ 7 /card

*\*Lunch Hour Fitness Program membership may be used only Monday – Friday*

**GYMNASIUM RENTAL FEES (Monday-Friday)**

Security Deposit	\$	155 /rental	\$ 160 /rental
Set-up Fee (equal to staff hourly rate for 4 hours)	\$	83 /rental	\$ 86 /rental
Resident/Non-Profit Youth Program	\$	52 /hr.	\$ 54 /hr.
Resident/Non-Profit Youth Program – ½ court	\$	31 /hr.	\$ 32 /hr.
Resident/Non-Profit Adult Program	\$	78 /hr.	\$ 81 /hr.
Resident/Non-Profit Adult Program – ½ court	\$	47 /hr.	\$ 49 /hr.
Resident Individual	\$	78 /hr.	\$ 81 /hr.
Commercial	\$	155 /hr.	\$ 160 /hr.
Non-Resident Individual	\$	155 /hr.	\$ 160 /hr.

**GYMNASIUM RENTAL FEES (Weekend)**

Security Deposit	\$	155 /rental	\$ 160 /rental
Set-up Fee (equal to staff hourly rate for 4 hours)	\$	83 /rental	\$ 86 /rental
Resident/Non-Profit Youth Program	\$	52 /hr.	\$ 54 /hr.
Resident/Non-Profit Youth Program – ½ court	\$	31 /hr.	\$ 32 /hr.
Resident/Non-Profit Adult Program	\$	78 /hr.	\$ 81 /hr.
Resident/Non-Profit Adult Program – ½ court	\$	47 /hr.	\$ 49 /hr.
Resident Individual	\$	78 /hr.	\$ 81 /hr.
Commercial	\$	155 /hr.	\$ 160 /hr.
Non-Resident Individual	\$	155 /hr.	\$ 160 /hr.