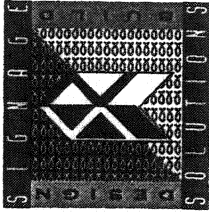
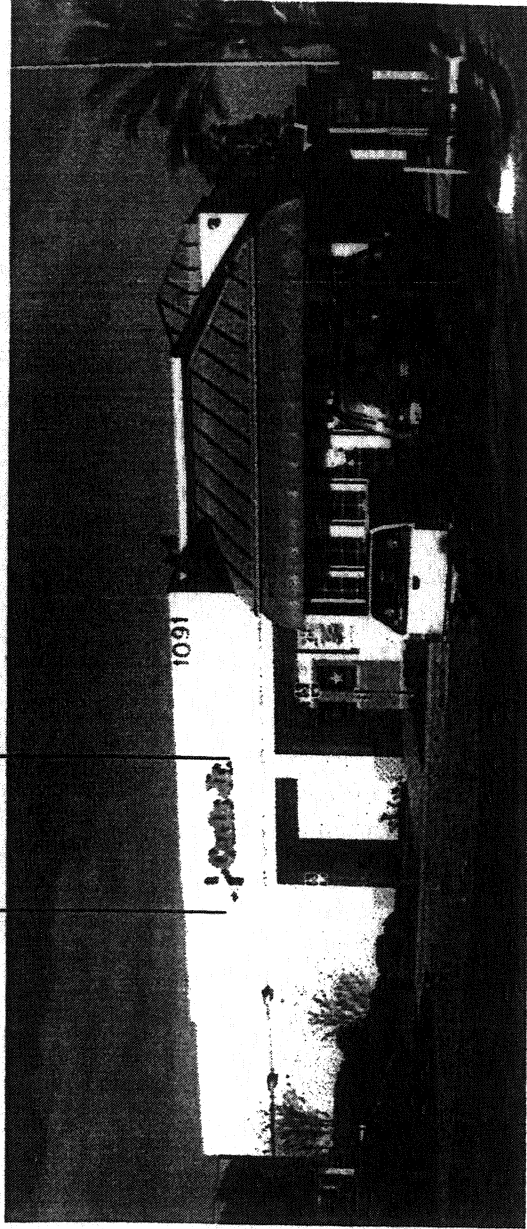




### PAD TENANT I. D. (WALL)

- MATERIALS:** A variety of wall sign treatments is encouraged. Signs may use any acceptable treatment as provided for in the Tenant Sign Criteria, except as restricted below.
- COPY:** Tenant name/ logo. Secondary copy identifying incidental services (e.g., Pharmacy) allowed with Owner approval.
- SIGN AREA:** Tenant name/ Logo: maximum of one square foot of signage lettering per linear foot tenant store frontage (includes primary and secondary copy in total aggregate).
- MAXIMUM HEIGHT:** Primary copy: maximum letter height 4'-0"  
Secondary copy: maximum letter height 12".
- TYPE FACE:** Custom tenant logotype/ name with Owner approval. (See Exhibit C)
- COLORS:** Tenant logotype colors, otherwise colors as provided for in Tenant Signage Color Palette and approved by Owner. (See Exhibit B)
- LIGHTING:** Variety of illumination per Design Guidelines.

**NOT TO EXCEED  
80% OF STOREFRONT**



98-2781  
3-8-99

Anheim PacificCenter





### SHOP TENANT I. D. (WALL)

**MATERIALS:** A variety of wall sign treatments is encouraged. Signs may use any acceptable treatment as provided for in the Tenant Sign Criteria, except as restricted below.

**COPY:** Tenant name/logo.

**SIGN AREA:** Tenant name/ Logo: maximum of one square foot of signage lettering per linear foot tenant store frontage. One (1) shop tenant sign is allowed per elevation facing street or parking lot.

**MAXIMUM HEIGHT:** Primary copy: maximum letter height 2'-6".

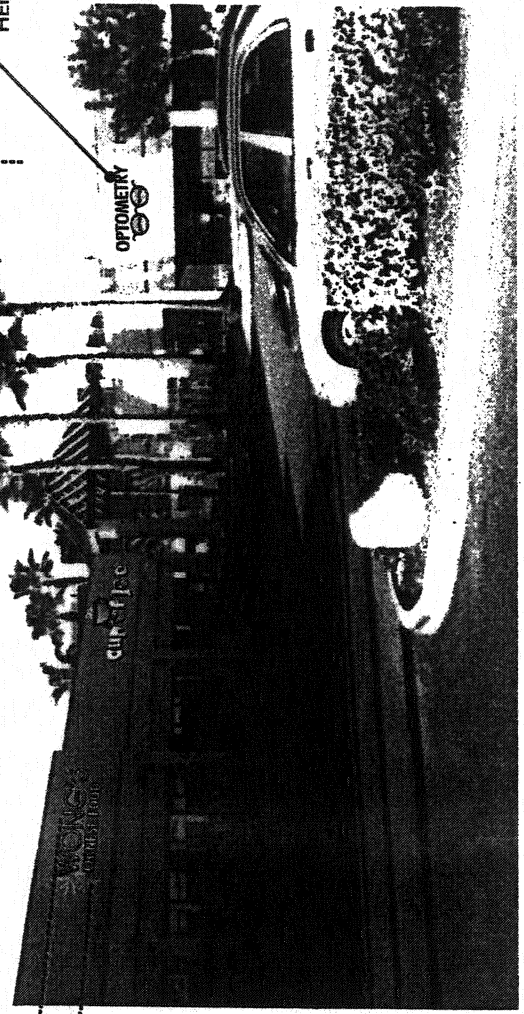
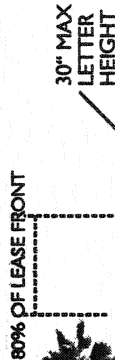
**TYPE FACE:** Custom tenant logotype/ name with Owner approval. (See Exhibit C)

**COLORS:** Custom colors in logotype/ or colors as provided for in Tenant Signage Color Palette and approved by Owner. (See Exhibit B)

**LIGHTING:** Variety of illumination per Design Guidelines.

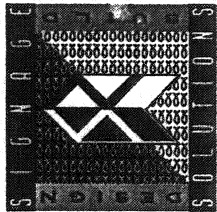
### GRAPHIC EMBELLISHMENTS (OPTIONAL)

It is encouraged that the graphic embellishments for this condition be as three dimensional as possible. This may be achieved by the use of sculpted/fabricated icons representing a tenants product or service. Maximum height for Graphic Embellishment shall not exceed forty-two inches (42"). Maximum length shall not exceed eighty percent (80%) of storefront. Graphics embellishments are not counted as sign area.



42" MAX 3-D GRAPHIC EMBELLISHMENT

TYPICAL STOREFRONT ELEVATION NOT TO SCALE



98-2781  
3-17-99

Anaheim PacificCenter





### SHOP TENANT I. D. (WALL)

**MATERIALS:** A variety of wall sign treatments is encouraged. Signs may use any acceptable treatment as provided for in the Tenant Sign Criteria, except as restricted below.

**COPY:** Tenant name/ logo.

**SIGN AREA:** Tenant name/ Logo: maximum of one square foot of signage lettering per linear foot tenant store frontage. One (1) shop tenant sign is allowed per elevation facing street or parking lot.

**MAXIMUM HEIGHT:** Primary copy: maximum letter height 2'-6".

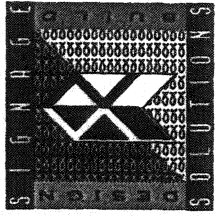
**TYPE FACE:** Custom tenant logotype/ name with Owner approval. (See Exhibit C)

**COLORS:** Custom colors in logotype/ or colors as provided for in Tenant Signage Color Palette and approved by Owner. (See Exhibit B)

**LIGHTING:** Variety of illumination per Design Guidelines.

#### GRAPHIC EMBELLISHMENTS (OPTIONAL)

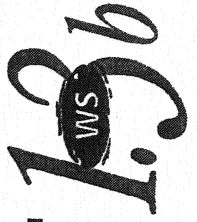
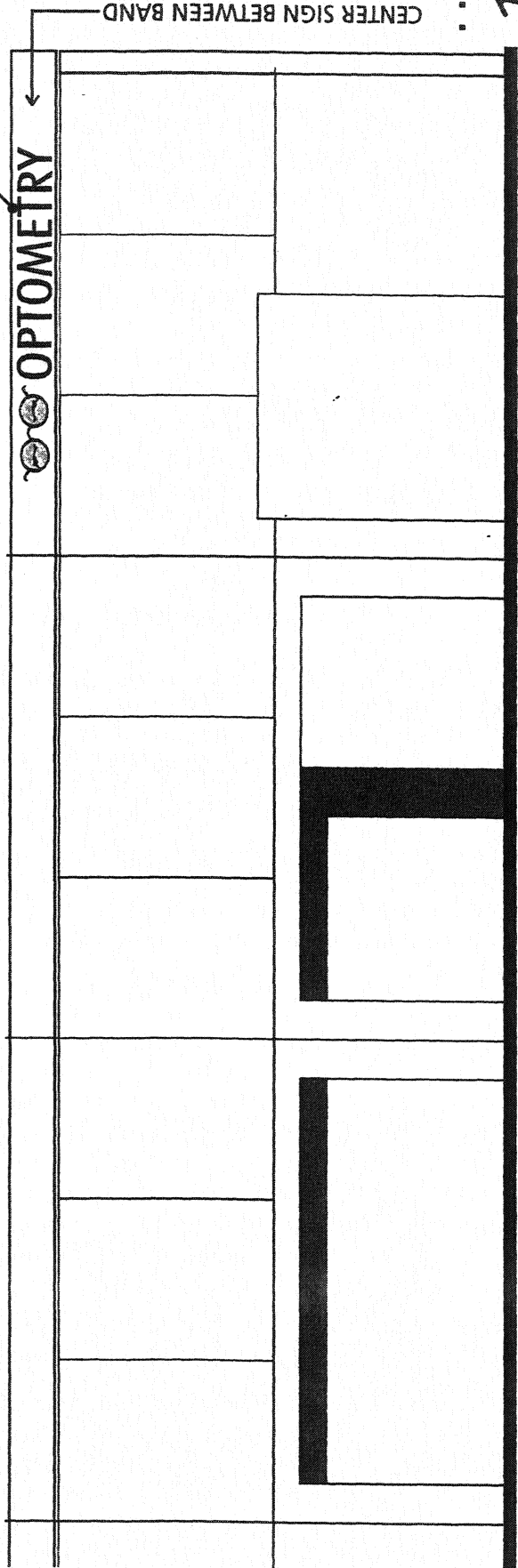
It is encouraged that the graphic embellishments for this condition be as three dimensional as possible. This may be achieved by the use of sculpted/ fabricated icons representing a tenants product or service. Maximum height for Graphic Embellishment shall not exceed forty-two inches (42"). Maximum length shall not exceed eighty percent (80%) of storefront. Graphics embellishments are not counted as sign area.



98-2781  
3-8-99

Anheim PacificCenter

80% OF LEASE FRONT  
30" MAX LETTER HEIGHT



PARTIAL NORTH ELEVATION SCALE: 3/32" = 1'-0"



## OFFICE TENANT I. D. (MAJOR)

**MATERIALS:** Channel letters internally illuminated.

**COPY:** Tenant name/ logo.

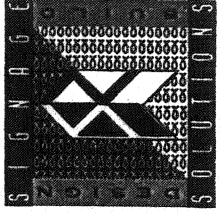
**SIGN AREA:** Tenant name/ Logo: maximum of one square foot of signage lettering per linear foot tenant store frontage.

**MAXIMUM HEIGHT:** Primary copy: maximum letter height 3'-0" and 6'-0" for logo.

**TYPE FACE:** Custom tenant logotype/ name with Owner approval. (See Exhibit C)

**COLORS:** Custom colors in logotype/ or colors as provided for in Tenant Signage Color Palette and approved by Owner. (See Exhibit B)

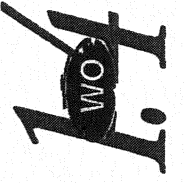
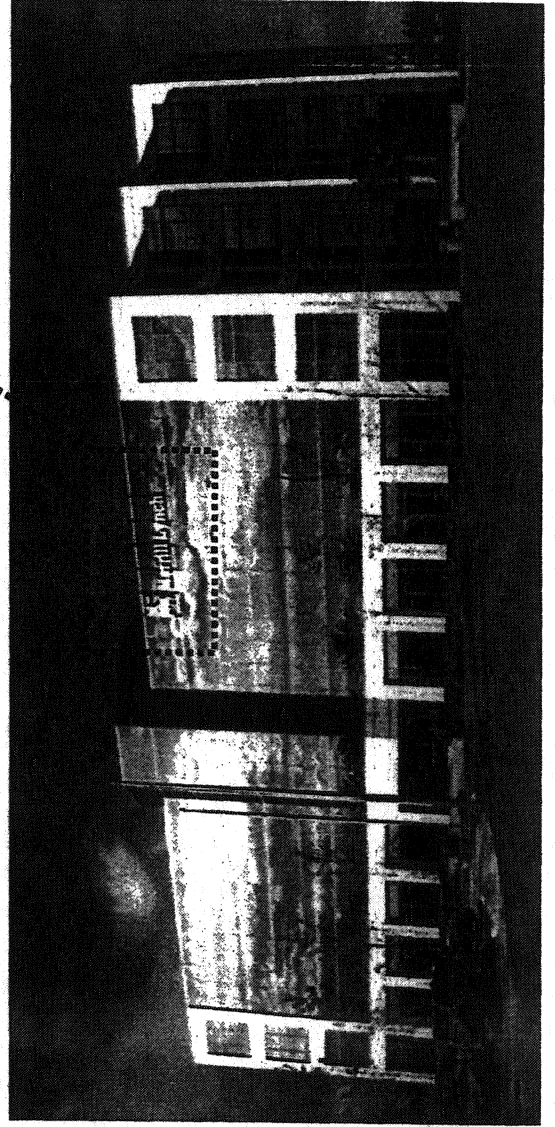
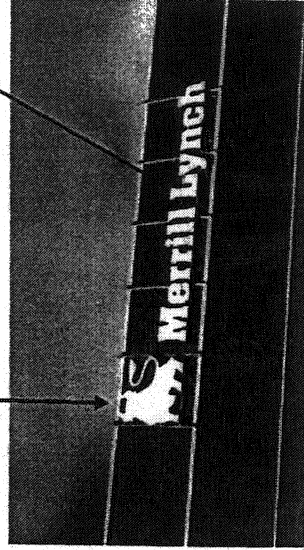
**LIGHTING:** Variety of illumination per Design Guidelines.



98-2781  
3-8-99

Anheim PacificCenter

6'-0" high logo  
3'-0" high letters





## OFFICE TENANT I. D. (EYEBROW)

**MATERIALS:** 1/4" cut out aluminum letters and logo.

**COPY:** Tenant name/ logo.

**SIGN AREA:** Tenant name/ Logo: maximum of 10' long x 20" high.

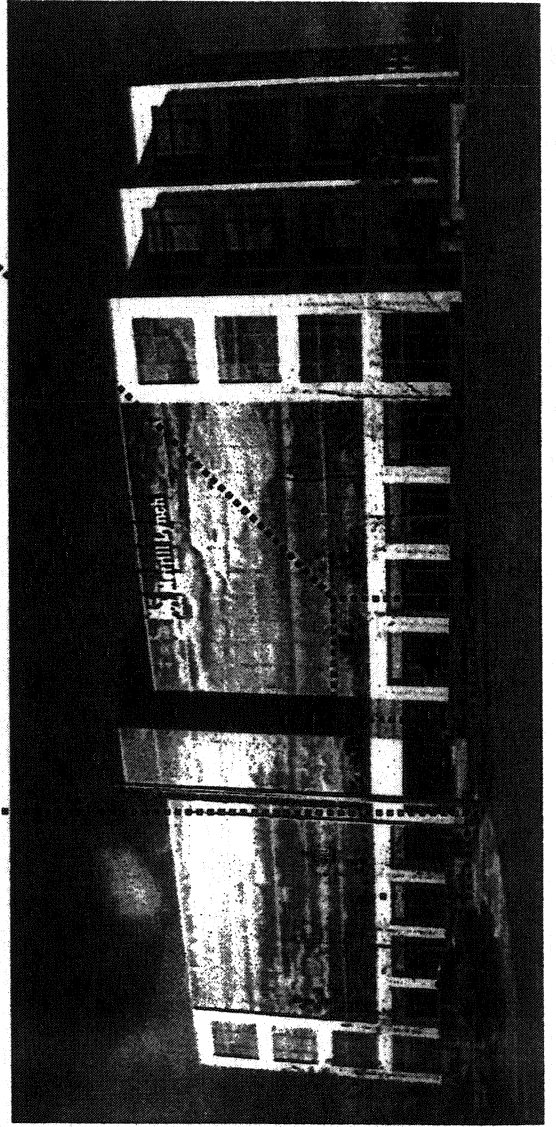
**MAXIMUM HEIGHT:** Primary copy: maximum letter height 10" and 20" high logo.

**TYPE FACE:** Custom tenant logotype/ name with Owner approval. (See Exhibit C)

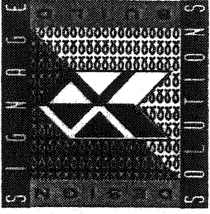
**COLORS:** A contrasting color to background or natural brushed aluminum finish.

**LIGHTING:** Variety of illumination per Design Guidelines.

### Future tenant eyebrow signage

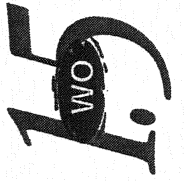


Existing location of eyebrow sign



98-2781  
3-8-99

Anheim PacificCenter



# U

## UNDER CANOPY /BLADE

**MATERIALS:** Layered Sintra painted Brushed Aluminum w/ vinyl tenant copy.

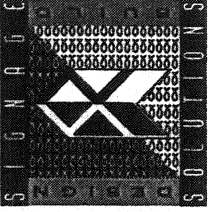
**COPY:** Tenant name/ logo.

**SIGN AREA:** 6 SF maximum sign area per tenant (to be included in total aggregate sign area allowed for tenant).

**TYPE FACE:** Custom tenant logotype/ name with Owner approval.

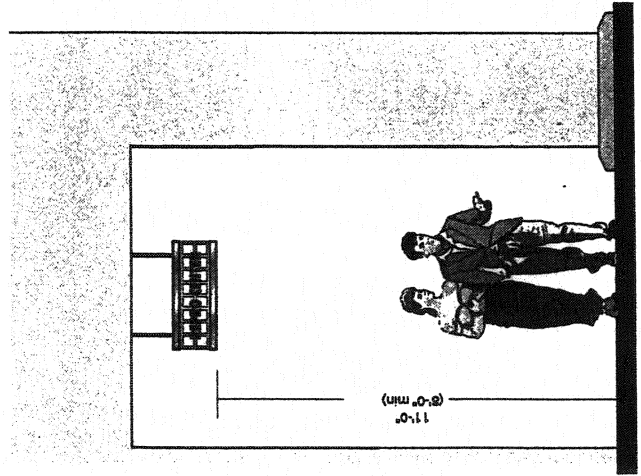
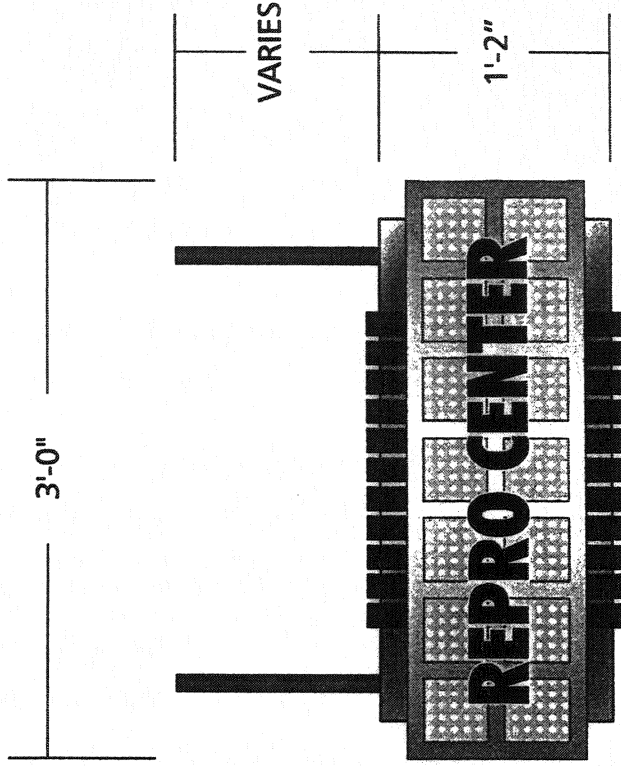
**COLORS:** Custom colors logotype/ or colors as provided for in Tenant Signage Color Palette and approved by Owner.

**LIGHTING:** Variety of illumination per Design Guidelines.



98-2781  
3-8-99

Anaheim PacificCenter



Scale: 1" = 1'-0"

16

### E.1

#### TENANT ENTRY INFO

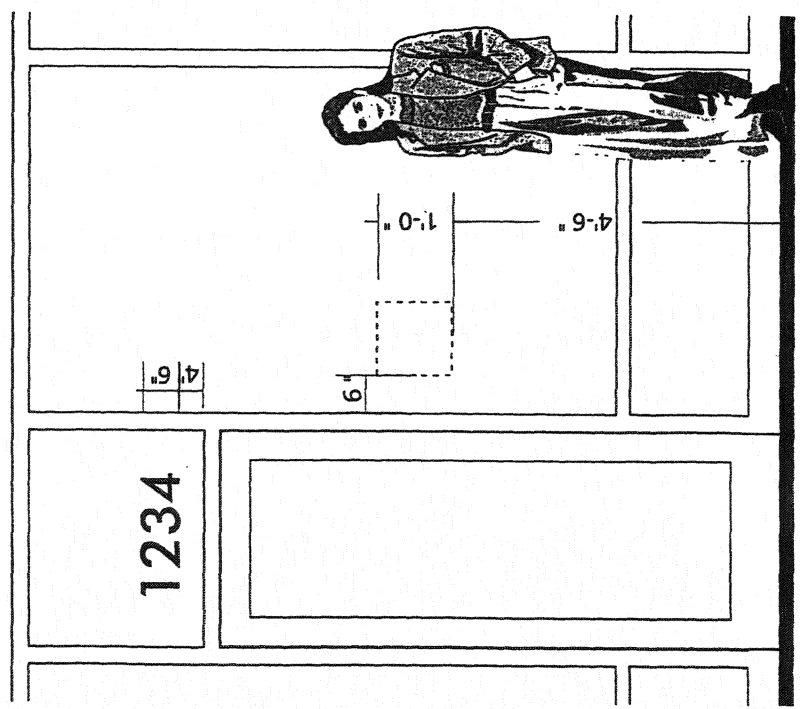
**MATERIALS:** Matte white vinyl letters on entry glass.

**COPY:** 6" High Suite Letter or Address, Tenant Entry Info 12" x 12".

**SIGN AREA:** 2.5 sq. Ft. maximum sign area.

**TYPE FACE:** Futura Medium.

**LOCATION:** Address or Suite Number centered over entry doors. Tenant Info on entry glass panel on same side as door handle.



TYPICAL ELEVATION

### E.2

#### REAR ENTRY I. D.

**MATERIALS:** Vinyl letters on door in contrasting color.

**COPY:** 4" high Suite Letter or Address, 2" high Tenant Name.

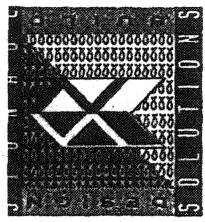
**SIGN AREA:** 2.5 sq. Ft. maximum sign area.

**TYPE FACE:** Futura Medium.

**NOTES:**  
1. No other signage is allowed on delivery side of building.  
2. Rear door signage is subject to approval by the Fire Department and the Building & Safety Department.

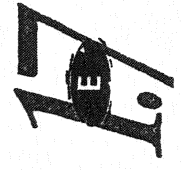


TYPICAL ELEVATION



98-2781  
3-23-99

Anheim Pacific Center





# WAREHOUSE TENANT I. D. (WALL)

**MATERIALS:** 1/2" cut out sintra letters. Pinned off wall  
1/2". Painted automotive finish.

**COPY:** Tenant name/ logo. Secondary copy identifying incidental services (e.g., Delivery) allowed with Owner approval.

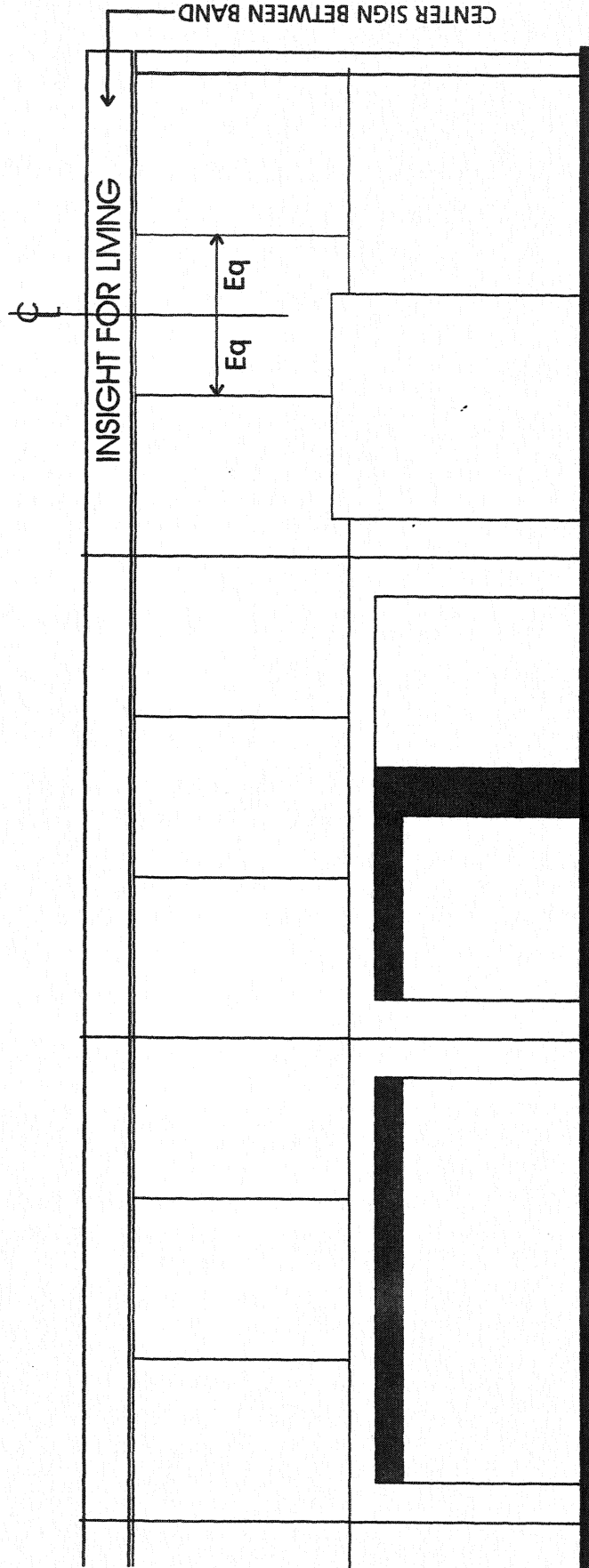
**SIGN AREA:** Tenant name/ Logo: maximum of one square foot of signage lettering per linear foot tenant store frontage.

**MAXIMUM HEIGHT:** Primary copy: maximum letter height 15".  
Secondary copy: maximum letter height 12".

**TYPE FACE:** Custom tenant logotype/ name with Owner approval. (See Exhibit C)

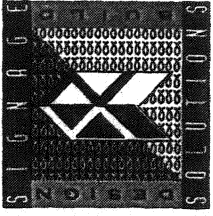
**COLORS:** Custom tenant logotype/ colors or colors as provided for in Tenant Signage Color Palette and approved by Owner. (See Exhibit B)

**LIGHTING:** Variety of illumination per Design Guidelines.



Anheim PacificCenter

98-2781  
3-8-99



PARTIAL NORTH ELEVATION      SCALE: 3/32" = 1'-0"





**PROJECT ENTRY SIGN**

**MATERIALS:** Dryvit structure with aluminum cabinets. Faces are polycarbonate with vinyl graphics.

**QUANTITY:** One (1)

**SIGN AREA:** 44" maximum height. The two panels

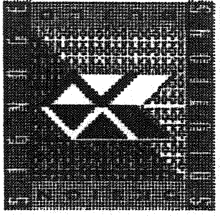
**PANELS:** Two (2) at 98.67 sq. ft. each; 6'-2" x 16'-0".

**TYPE FACE:** Per Corporate standards with Owner approval.

**COLORS:** See Color Schedule.

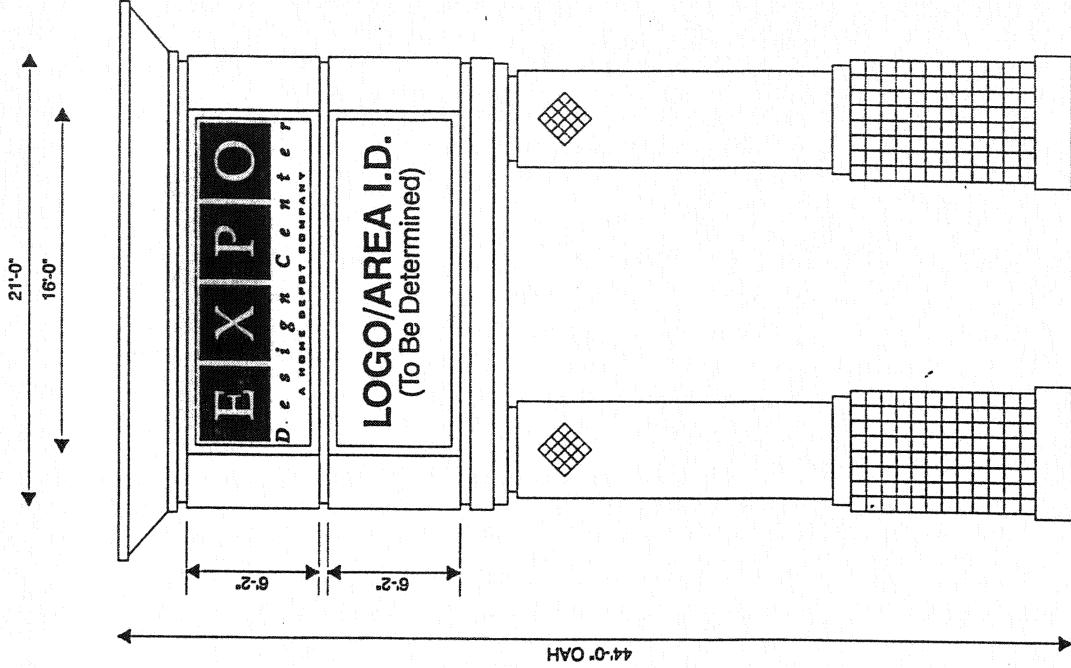
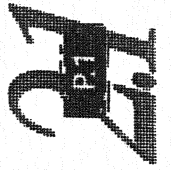
**LIGHTING:** Variety of illumination.

**Width:** Approximately three (3) feet.



98-2781  
3-8-99

Anaheim Pacific Center



M.1

### Existing Project I. D. Monuments

**MATERIALS:** Repaint existing monuments and add brushed aluminum cabinets w/ routed copy. Base is a brushed aluminum grid.

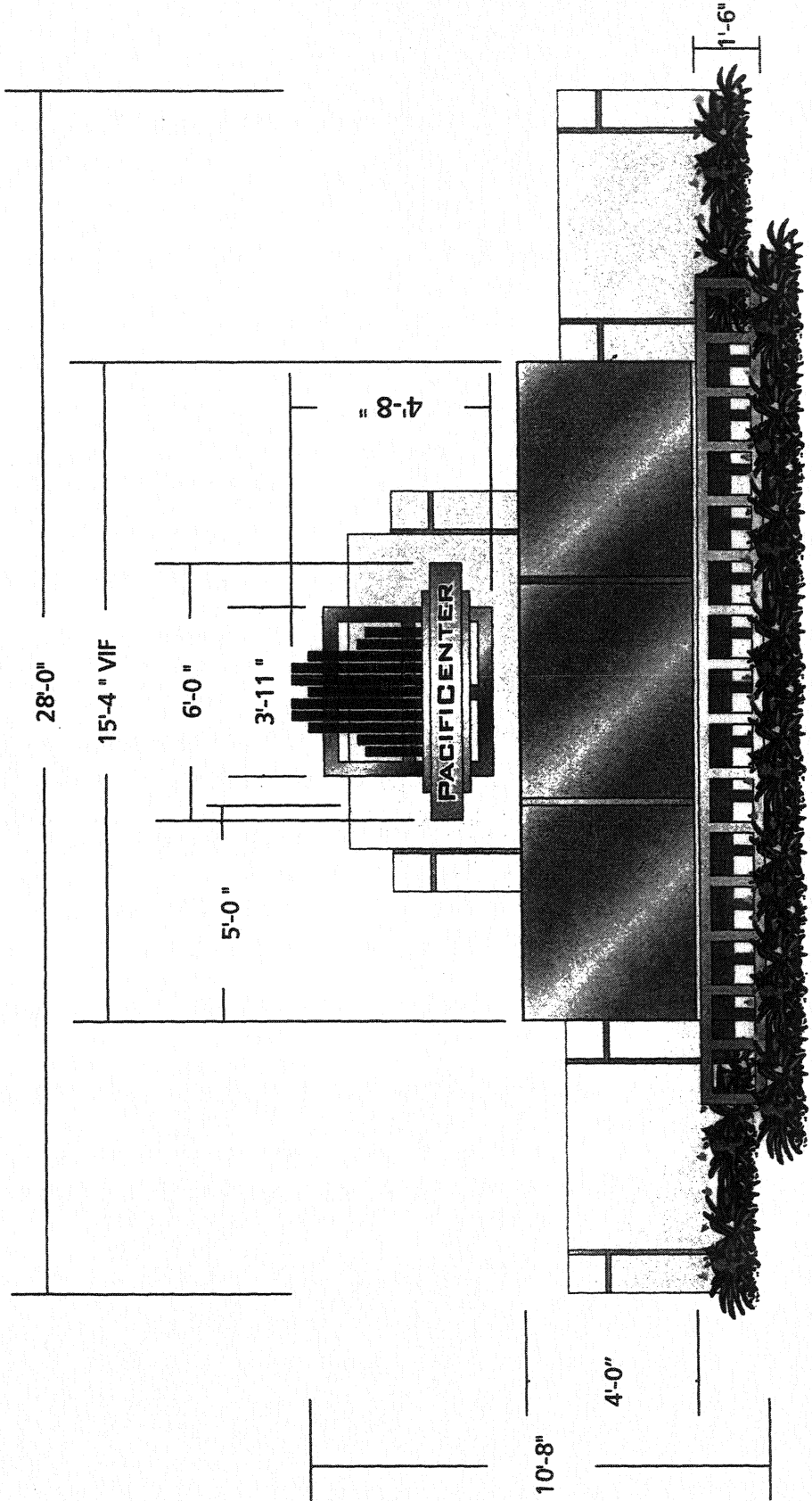
**QUANTITY:** (5)

**SIGN AREA:** 60 Sq. Ft. maximum.

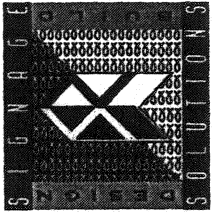
**TENANT PANELS:** Add brushed aluminum tenant panels. Copy area to be routed out and backed with white plex.

**COLORS:** See Color Schedule.

**LIGHTING:** Use existing lighting and fluorescent lamps.



Scale: 1/4" = 1'-0"



98-2781  
3-8-99

Anaheim PacificCenter

OPTION A

