

Properties in or near a fire threat zone are at a higher risk for wildfire damage. Be energy smart and protect your home by taking advantage of rebates on fire-resistant measures, planting approved shade trees, and following any Anaheim Fire & Rescue recommendations to improve safety in wildfire zones.

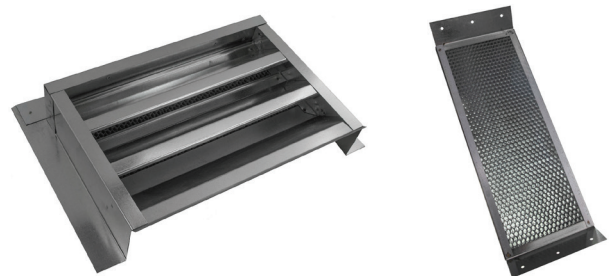


## Fire-Resistant Attic Insulation

Fire resistant attic insulation is a layer of fiber that reduces the risk of fires starting in the attic while at the same time decreasing the energy demands of heating and cooling systems.  
*(Rebate: \$0.35/sq. ft., \$750 max)*

## Fire-Resistant Vents

These vents are designed to block embers and fire from entering the home through the attic during extreme situations such as wildfires or local vegetation fires.  
*(Rebate: \$250 max, not to exceed purchase price)*



## Home Safety Visit

A personalized fire safety assessment of your home conducted by an Anaheim Fire & Rescue expert.

Learn about testing and maintaining your smoke alarms and if needed, receive a replacement.

Learn how to prevent home fires and what to do in the event of a fire.

Visit [ANAHEIM.NET/FIRE](http://ANAHEIM.NET/FIRE) to schedule a visit.



## Home Utility Check-Up

Learn about simple, practical ways to reduce your utility bill by increasing water and energy efficiency.

Receive free energy and water saving devices which may include LED lights, low-flow shower heads, faucet aerators, toilet flappers and hose nozzle shutoffs.

Receive a personalized report on recommended action items and rebates you may qualify for.

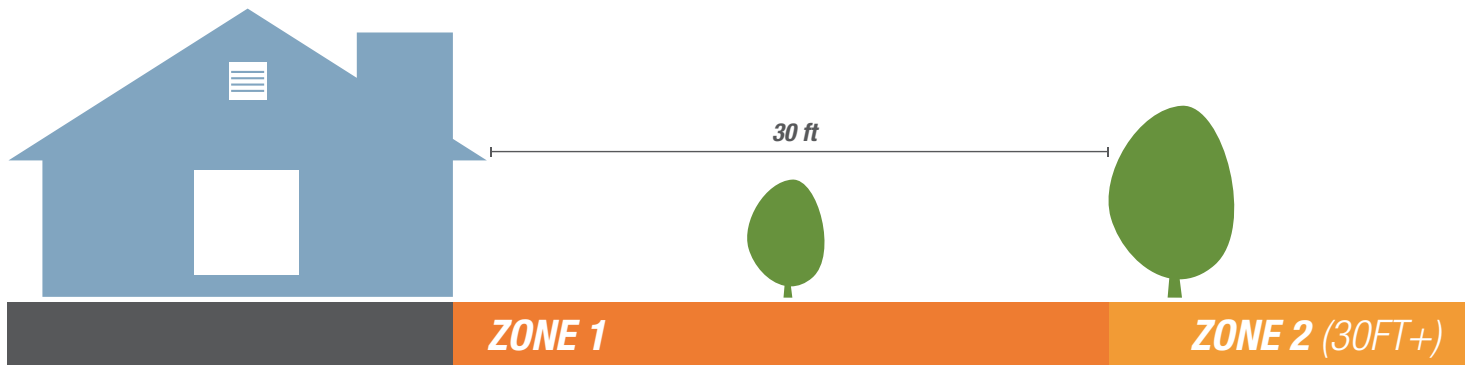
Visit [ANAHEIM.NET/UTILITIES](http://ANAHEIM.NET/UTILITIES) to schedule an appointment.

# BE FIRE SAFE & ENERGY SMART



## Fire-Resistant Shade Trees

TreePower offers a number of FREE fire-resistant shade trees that meet fire threat zone guidelines. Visit [ANAHEIM.NET/TREEPOWER](http://ANAHEIM.NET/TREEPOWER) for an approved plant selection.



### **ZONE 1** *within 30 feet of all structures or to the property line:*

- Trim trees regularly to keep branches a minimum of 10 feet from other trees
- Remove branches that hang over your roof and keep dead branches 10 feet away from your chimney
- Remove or prune flammable plants and shrubs near windows
- Remove vegetation and items that could catch fire from around and under decks

### **ZONE 2** *30-100 ft from all structures or to the property line:*

- Remove fallen leaves, needles, twigs, bark, cones, and small branches
- Create horizontal spacing between shrubs and trees
- Eliminate opportunities for a vertical "fire ladder" by:
  - removing branches beneath large trees for a 6 foot minimum clearance
  - allowing a minimum clearance of 3 times height of shrub underneath a tree

For more information on rebates and qualifications on fire-resistant measures, visit [ANAHEIM.NET/UTILITIES](http://ANAHEIM.NET/UTILITIES) or call 714-765-4250.